



75

IMPROVING LIFE FOR THE PEOPLE OF GREATER HOUSTON FOR 75 YEARS

# HOUSTON ENDOWMENT

A PHILANTHROPY ENDOWED BY

Jesse H. and Mary Gibbs Jones

2012 ANNUAL REPORT



“Early in his business life, Mr. Jones determined that the principal beneficiaries of any material wealth which he might accumulate should be those less fortunate than himself. In this feeling he was joined by his wife and others of his family. It was in furtherance of this philosophy that Mr. and Mrs. Jones established Houston Endowment.”

---

FROM HOUSTON ENDOWMENT'S FIRST REPORT, 1937-1959

---



**"You remember we have from time to time discussed writing a little history or report of the activities of Houston Endowment from the time you and Uncle Jess established it in 1937 through the year of 1959. Enclosed with this letter is the booklet that is the final result and I think a quite attractive one."**

Houston Endowment president John T. Jones, Jr.  
to his aunt Mary Gibbs Jones  
February 25, 1960





IMPROVING LIFE FOR THE PEOPLE OF GREATER HOUSTON FOR 75 YEARS

# HOUSTON ENDOWMENT

A PHILANTHROPY ENDOWED BY

Jesse H. and Mary Gibbs Jones

---

2012 ANNUAL REPORT







# CONTENTS

The Foundation 7

Grants 11

13 **ARTS & CULTURE**

41 **EDUCATION**

63 **ENVIRONMENT**

81 **HEALTH**

99 **HUMAN SERVICES**

The Founders 127

Board of Directors 133

Staff 140

Financial Report 143

Grant Application 149

Index to Grantees 151





# THE FOUNDATION

# 75

From the time he arrived in Houston in 1898 at the age of 24, JESSE JONES nurtured a reciprocal relationship with his community, intent on both building his business and improving his city. To Jones, they were connected—only if the city prospered, would he succeed. As a devoted partner and as an active community volunteer, MARY GIBBS JONES supported his efforts.

Downtown Houston, 1950s



During the first years of their marriage in the 1920s, the Joneses donated more than \$1 million to help initiate and develop institutions and organizations that would improve life for Houston's people and encourage the city's growth. On September 25, 1937, with stock from Mr. Jones's holding company, they formalized their philanthropy and established Houston Endowment. They named the foundation for the city they loved and called home.

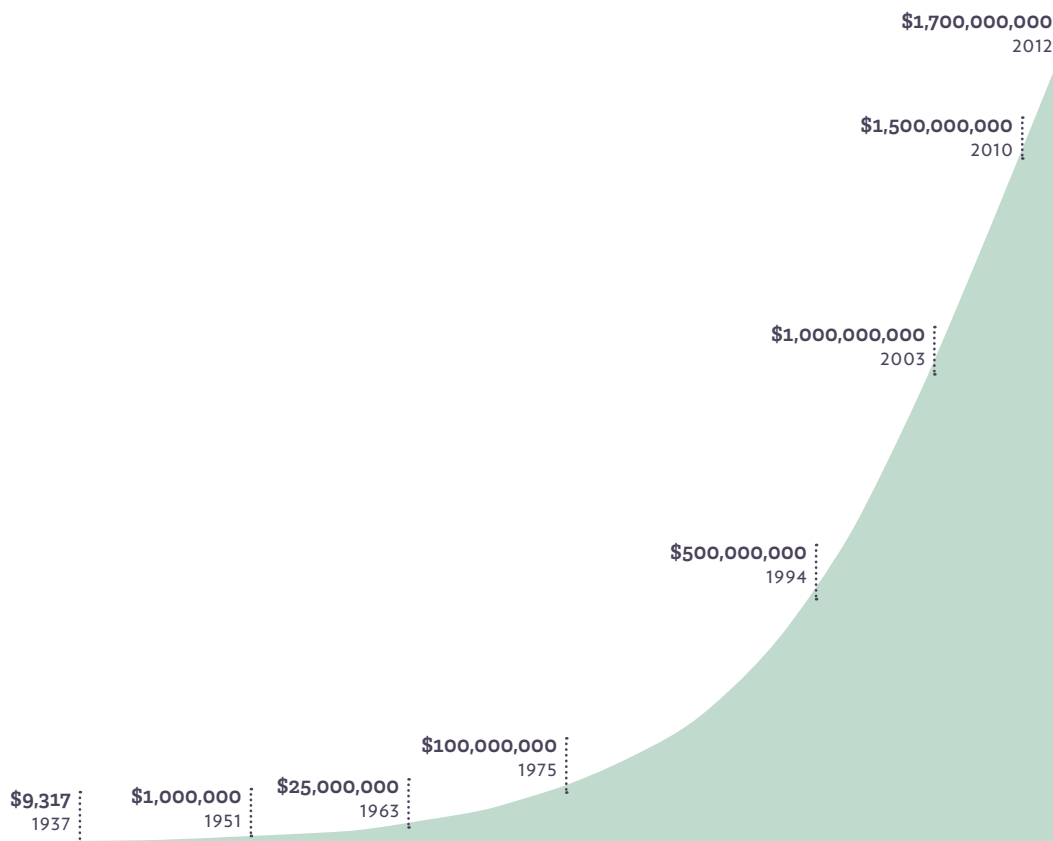
In 1938, the foundation's first full year, Houston Endowment donated almost \$15,000; \$11,000 went to colleges and universities. In the late 1940s, Mr. Jones began transferring ownership of his buildings and businesses—including the Rice Hotel, the Houston Chronicle and the famous Mayfair House in New York City—to the foundation, and grants increased to more than \$200,000 each year. By the time Mr. Jones passed away in 1956, Houston Endowment had made donations in excess of \$6 million (\$50 million in constant dollars).

By then Houston Endowment owned and operated major hotels, movie theaters and office buildings developed by Jesse Jones in Houston, New York City, Fort Worth and Dallas. In response to the Tax Reform Act of 1969, the foundation began selling the businesses and buildings and investing the proceeds in securities. The sale of the Houston Chronicle for \$415 million to the Hearst Corporation in 1987 completed the process. The foundation has evolved, but its intention to respond to the ever-changing needs of the greater Houston community has not wavered.

Houston Endowment was located in Jesse Jones's Bankers Mortgage Building from 1937 to 1990, when it moved into new headquarters in the Chase Tower



Since its 1937 inception, Houston Endowment has donated almost \$1.7 billion (\$3 billion in constant dollars) to help arts and culture, education, environment, health and human services organizations realize the Joneses' vision of creating a community where the opportunity to thrive is available to all.



### CUMULATIVE GRANT DISBURSEMENTS—MILESTONES 1937–2012

**\$1.7** BILLION GRANTS TO DATE | **\$3** BILLION CONSTANT DOLLARS

"To preserve the prosperity of our city, we must keep alive the community spirit that has been such an important factor in the growth of Houston. We must strive for that unity of action, the force that makes great achievements easy."

---

JESSE H. JONES

---



# GRANTS

Houston Endowment supports nonprofit organizations and educational institutions that produce and maximize enduring benefits for the people of greater Houston. During 2012, Houston Endowment donated \$91,964,626 to help create a community where the opportunity to thrive is available to all.

<b>ARTS &amp; CULTURE</b>	\$ 19,510,058
<b>EDUCATION</b>	25,336,047
<b>ENVIRONMENT</b>	12,610,500
<b>HEALTH</b>	11,155,000
<b>HUMAN SERVICES</b>	23,353,021
<b>TOTAL</b>	\$ 91,964,626





# ARTS & CULTURE

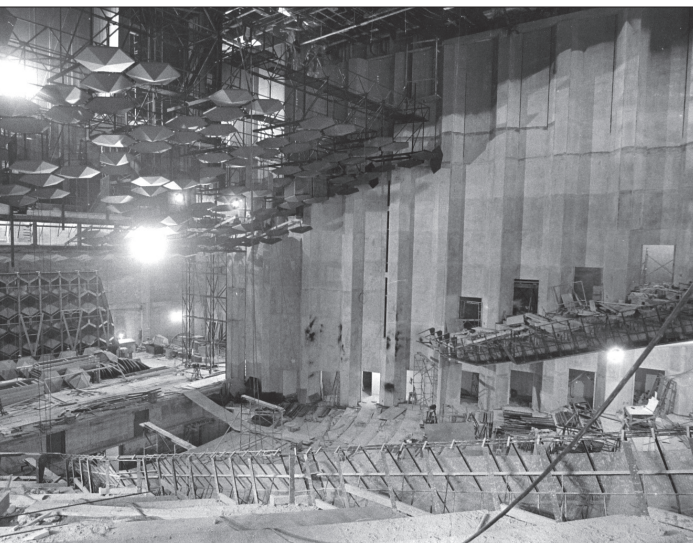
# 75

Engaging broader  
audiences in  
arts and culture  
for **75** years



JESSE JONES helped bring the Russian Symphony Orchestra to Houston in 1911 and gave tickets to schoolchildren so many for the first time could experience a live classical music performance. The Orchestra's presentations inspired local musicians to form the Houston Symphony, which first performed in 1913 in Mr. Jones's Majestic Theatre. During the Joneses' lengthy 1920 honeymoon in New York City, MRS. JONES reported in her diary that they had enjoyed 32 plays, five operas and two concerts. In 1924, the Joneses were among the original donors to the Museum of Fine Arts, Houston. Mrs. Jones was instrumental in bringing New York's Metropolitan Opera to Houston radio every Saturday afternoon, and at home she would study the music and Italian lyrics before each broadcast. The Joneses knew firsthand that arts and culture enriched their lives and their community.

The **Houston Symphony Society**—Houston’s first large performing arts organization—has received support since 1940. In the 1960s, the Symphony got a further boost when Houston Endowment donated \$7.4 million to build the **Jesse H. Jones Hall for the Performing Arts** as its new home, one shared with the **Houston Grand Opera**, which received its first foundation grant in 1956, a year after it was established.



In 1965, Houston Endowment donated a half block of land for the **Alley Theatre**, a grant recipient since 1960.

The foundation helped build the **Hobby Center for the Performing Arts** and the **Houston Ballet Foundation’s** new Center for Dance. Like Houston’s other large arts institutions, the Ballet received Houston Endowment support to help it grow soon after it was established in 1955.

Jones Hall and the Alley Theatre spurred the area’s transformation into today’s thriving performing arts destination.

The **Museum of Fine Arts, Houston** received its first Houston Endowment grant in 1941. A major gift toward the Audrey Jones Beck Building in 1991 was made in honor of Houston's art collector and the Joneses' granddaughter.



Not only do youth programs cultivate future audiences, but studies show that academic scores improve when the arts are used to illuminate learning.

Supported by Houston Endowment since 1949, the **Houston Youth Symphony & Ballet** develops young musicians by providing training under professional musicians and performance opportunities in professionally conducted concerts. Two-thirds of those who remain with the program through their high school senior year become music majors in college.

As other organizations emerged in more recent decades to engage young people in arts and culture, Houston Endowment stepped in with support. In 1990, the foundation donated \$3 million toward the Mary Gibbs Jones Building for the **Children's Museum**, an institution that today serves more than 850,000 people each year and focuses on bilingual learning programs for kids up to 12 years old.



In addition to supporting larger institutions and programs for children, Houston Endowment has provided grants to the city's small and midsize arts organizations, including the **Orange Show Center for Visionary Art** and its famous monument, the popular Beer Can House, plus its flamboyant Art Car Parade, a festive outdoor event that attracts more than 250,000 people each year.

One of a few venues in the nation devoted exclusively to craft, the **Houston Center for Contemporary Craft** focuses on objects made of fiber, metal, glass, clay and wood. It has received foundation support almost since it opened in 2001.



**Inprint**, a grant recipient since 1989, has helped Houston become recognized for the written word by offering writing workshops and presentations by Pulitzer, Nobel and National Book Award winners.

Houston Endowment frequently supports organizations that give the city a unique edge.

Houston Endowment helps strengthen organizations. **Houston Arts Alliance** and **Mid-America Arts Alliance**, a grant recipient since 2001, create support systems and provide training in finances, fundraising, governance, planning and community impact so smaller organizations can make enduring contributions to Houston's cultural fabric.



Houston's rich diversity of ethnic, religious, occupational and neighborhood-identified communities has produced music, dance, crafts, storytelling and other expressions that are shaped by commonly held values passed down from generation to generation. Since 2010, Houston Endowment has supported **Houston Arts Alliance's *City Folklife and Traditional Arts Program*** to research, document, preserve and present the lively cultural traditions that make the nation's fourth-largest metropolitan area a vibrant urban center.





In 2012, Houston Endowment contributed \$6 million to the **Independent Arts Collaborative** for the new Midtown Arts & Theater Center Houston (MATCH) to continue building the city's vitality by bringing arts and culture to more people. MATCH, located near mass transit in the heart of Midtown, is designed to bring Houston's innovative and alternative performing and visual arts organizations together under one roof, serve as a point of entry for community artists, encourage new audiences and exhibit original work that will feed the cultural vigor of the city. The Joneses showed with their earlier donations how the arts can play a pivotal role in a city's development, and Houston Endowment anticipates that the interplay among the area's diverse artistic, ethnic and socioeconomic groups at MATCH will further define Houston's progress in the 21st century.



# ARTS & CULTURE

23  
ARTS & CULTURE

Appreciation	\$ 1,123,500
Creation	7,291,558
Culture	1,795,000
History	2,025,000
Strategic Partnership	7,275,000
<b>Total</b>	<b>\$ 19,510,058</b>

GRANTEE & PURPOSE	YEAR APPROVED	TOTAL GRANT	2012 ALLOCATION
<b>Appreciation</b>			
<b>AMERICAN FESTIVAL FOR THE ARTS</b> HOUSTON, TX Toward affordable, high quality music education and performance programs for young people	2012	\$ 150,000	\$ 75,000
<b>CITY BALLET OF HOUSTON</b> HOUSTON, TX Toward engaging and training 100 children to perform in full-length, professional productions of "The Nutcracker," and toward presenting performances free of charge to the public	2012	10,000	5,000
<b>CLAYHOUSTON</b> HOUSTON, TX Toward the 47th annual National Council on Education for the Ceramic Arts conference in Houston	2012	25,000	0
<b>DANCE HOUSTON</b> HOUSTON, TX Toward increasing the appreciation of dance through festivals, workshops, summer camps, community events and the promotion of dance and dance groups	2011	30,000	15,000
<b>DANCE SOURCE HOUSTON</b> HOUSTON, TX Toward performance opportunities, marketing and support services for smaller dance companies, choreographers and dancers	2012	50,000	25,000
<b>EVELYN RUBENSTEIN JEWISH COMMUNITY CENTER OF HOUSTON TEXAS</b> HOUSTON, TX Toward Dance Month 2013 and 2014, a series of programs to promote the appreciation of all dance forms through master classes, workshops, commissions of new work and performances	2012	30,000	0
<b>FRENETICORE</b> HOUSTON, TX Toward presenting and promoting original theater, dance, film and music, and offering a free after-school dance and theater program for children	2011	35,000	17,500
<b>FRESH ARTS COALITION</b> HOUSTON, TX Toward support services for small and midsize arts organizations, and toward enhancing services by merging Spacetaker with Fresh Arts Coalition	2012	96,000	96,000
<b>GLASSTIRE</b> HOUSTON, TX Toward a Web site that provides information and commentary about the visual arts in Texas	2011	80,000	40,000
<b>HITS THEATRE</b> HOUSTON, TX Toward performance and musical theater production training for children ages five through 18	2012	120,000	60,000
<b>HOPE STONE, INC.</b> HOUSTON, TX Toward administrative salaries to expand residency programs, educational opportunities for underserved children and contemporary dance performances Toward contemporary dance performances, residencies for emerging choreographers and performance artists, and educational programs for young people	2011	75,000	50,000
<b>HOUSTON CENTER FOR PHOTOGRAPHY</b> HOUSTON, TX Toward promoting the appreciation of photography through exhibitions, publications, competitions and educational programs	2012	130,000	65,000

GRANTEE & PURPOSE	YEAR APPROVED	TOTAL GRANT	2012 ALLOCATION
<b>HOUSTON CHILDREN'S CHORUS INC.</b> HOUSTON, TX Toward music education programs and choral performances by children	2012	70,000	40,000
<b>HOUSTON YOUTH SYMPHONY &amp; BALLET</b> HOUSTON, TX Toward providing young musicians with training by professional musicians and with the opportunity to perform in professionally conducted concerts	2011	105,000	35,000
<b>INSTITUTE OF HISPANIC CULTURE OF HOUSTON TEXAS</b> HOUSTON, TX Toward the 27th annual "Dia de la Hispanidad," a concert at Miller Outdoor Theatre that highlights music and dance from Hispanic nations	2011	15,000	5,000
<b>JAZZ EDUCATION INC.</b> HOUSTON, TX Toward teaching theory, composition, improvisation and professional development skills to middle school through college-age young people through the Summer Jazz Workshop	2011	40,000	20,000
<b>SOCIETY FOR THE PERFORMING ARTS</b> HOUSTON, TX Toward presenting nationally and internationally acclaimed performing artists and companies	2011	300,000	100,000
<b>SPRING BRANCH INDEPENDENT SCHOOL DISTRICT</b> HOUSTON, TX Toward exhibitions, classes and outreach programs at the Spring Branch ISD Altharetta Yeargin Art Museum	2012	20,000	10,000
<b>TALENTO BILINGÜE DE HOUSTON</b> HOUSTON, TX Toward preserving and presenting Latino arts and culture through theater, dance, music and visual arts	2012	95,000	95,000
<b>VIRTUOSI OF HOUSTON</b> HOUSTON, TX Toward a chamber orchestra that provides training and performance opportunities for musicians between the ages of 11 and 18	2010	50,000	25,000
Toward a development director to sustain a chamber orchestra that provides training and performance opportunities for musicians between the ages of 11 and 18	2010	75,000	25,000
<b>WRITERS IN THE SCHOOLS</b> HOUSTON, TX Toward enhancing teachers' writing and editing skills and improving curricula	2010	40,000	20,000
Toward placing professional writers in schools to help children learn literacy and writing skills	2010	200,000	100,000
<b>YOUNG AUDIENCES INC. OF HOUSTON</b> HOUSTON, TX Toward staff for Arts Partners, a collaboration among area organizations to bring art programs and activities to 54 Houston area school districts	2012	120,000	80,000
Toward providing music, dance, visual arts and theater programs to schools and other venues that serve children	2012	170,000	85,000
<b>TOTAL—APPRECIATION</b>			\$ 1,123,500

GRANTEE & PURPOSE	YEAR APPROVED	TOTAL GRANT	2012 ALLOCATION
<b>Creation</b>			
<b>ALLEY THEATRE</b> HOUSTON, TX Toward theatrical productions and educational and community outreach	2011	\$ 300,000	\$ 100,000
Toward renovating and upgrading the theater building	2012	2,000,000	0
<b>ARS LYRICA HOUSTON</b> HOUSTON, TX Toward performing Baroque music on historically appropriate instruments and presenting educational programs	2012	70,000	35,000
<b>ART COUNCIL INC.</b> BROOKLYN, NY Toward grants to visual artists in Houston	2012	95,000	45,000
<b>ART LEAGUE OF HOUSTON</b> HOUSTON, TX Toward visual art exhibitions and educational and community outreach programs	2011	120,000	60,000
<b>AURORA PICTURE SHOW</b> HOUSTON, TX Toward a micro-cinema that promotes non-commercial film, video and new media artists	2011	80,000	40,000
<b>BACH SOCIETY HOUSTON</b> HOUSTON, TX Toward presenting historically accurate performances of Johann Sebastian Bach's music and the music of other composers who follow his tradition	2010	30,000	15,000
<b>CATASTROPHIC THEATRE INC.</b> HOUSTON, TX Toward presenting contemporary plays and creating original works for theater	2011	120,000	60,000
<b>CLASSICAL THEATRE COMPANY</b> HOUSTON, TX Toward presenting classical works of theater	2012	10,000	10,000
<b>CONTEMPORARY ARTS MUSEUM HOUSTON</b> HOUSTON, TX Toward presenting regional, national and international contemporary art, and toward educational and outreach programs	2011	300,000	100,000
<b>COUNTRY PLAYHOUSE</b> HOUSTON, TX Toward productions and educational programs at a community theater	2011	30,000	15,000
<b>CYPRESS CREEK FINE ART ASSOCIATION</b> SPRING, TX Toward exhibitions, public events and school programs at the Pearl Fincher Museum of Fine Arts	2011	100,000	50,000
<b>CYPRESS CREEK FOUNDATION FOR THE ARTS AND COMMUNITY ENRICHMENT</b> SPRING, TX Toward performing arts presentations and educational programs for the people of northwest Harris and south Montgomery counties	2012	20,000	10,000
<b>DA CAMERA SOCIETY OF TEXAS</b> HOUSTON, TX Toward performances of thematically presented chamber music, contemporary music and jazz by leading local, national and international artists, and toward educational outreach programs	2011	150,000	75,000

GRANTEE & PURPOSE	YEAR APPROVED	TOTAL GRANT	2012 ALLOCATION
<b>DANCE OF ASIAN AMERICA</b> HOUSTON, TX Toward promoting cultural appreciation through Chinese dance and providing young dancers with professional training and performance opportunities	2010	30,000	15,000
<b>DIVERSE WORKS INC.</b> HOUSTON, TX Toward presenting visual and performing art that addresses difficult social issues, represents marginalized communities and challenges traditional aesthetic standards	2012	150,000	75,000
<b>DOMINIC WALSH DANCE THEATER</b> HOUSTON, TX Toward a development director to increase fundraising and support for the company Toward a contemporary ballet company	2011	30,000	10,000
<b>EARTHEN VESSELS INC. DBA SANDRA ORGAN DANCE COMPANY</b> HOUSTON, TX Toward contemporary dance programs and performances that focus on history, people and current issues	2011	35,000	17,500
<b>ENSEMBLE THEATER</b> HOUSTON, TX Toward theatrical performances, professional training and theater, dance and music programs for young people that focus on African-American experiences	2012	150,000	75,000
<b>EXPRESS THEATRE</b> HOUSTON, TX Toward creating and presenting culturally diverse performing arts programs for children and families Toward creating and presenting culturally diverse performing arts programs for children and families	2010	60,000	30,000
<b>FOTOFEST INC.</b> HOUSTON, TX Toward citywide exhibitions and educational programs at FotoFest 2012, a biennial international photography exhibition, and toward general operating support during the inter-biennial year of 2013	2011	215,000	150,000
<b>GALVESTON ARTS CENTER INC.</b> GALVESTON, TX Toward presenting innovative contemporary art and providing educational and outreach programs	2010	85,000	42,500
<b>GILBERT &amp; SULLIVAN SOCIETY OF HOUSTON</b> HOUSTON, TX Toward presenting Gilbert & Sullivan comic operas	2011	60,000	20,000
<b>GULF COAST—A JOURNAL OF LITERATURE AND FINE ARTS</b> HOUSTON, TX Toward producing a biannual literary journal and teaching publishing skills to graduate and undergraduate students in the University of Houston's Creative Writing Program	2012	10,000	0
<b>HOUSTON BALLET FOUNDATION</b> HOUSTON, TX Toward ballet performances and educational and community outreach programs	2011	300,000	100,000
<b>HOUSTON CENTER FOR CONTEMPORARY CRAFT</b> HOUSTON, TX Toward presenting art objects made primarily of fiber, metal, glass, clay and wood, and toward residencies, workshops, demonstrations and after-school and summer programs for students	2012	225,000	75,000

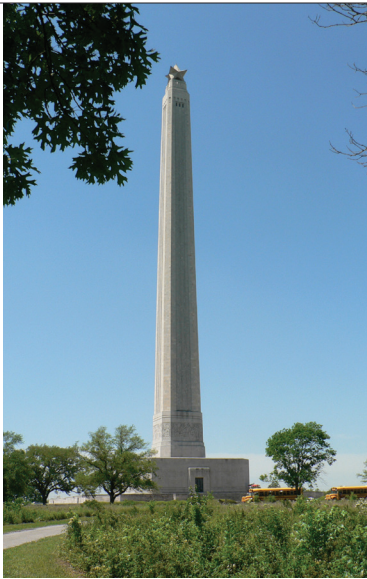
GRANTEE & PURPOSE	YEAR APPROVED	TOTAL GRANT	2012 ALLOCATION
<b>HOUSTON CHAMBER CHOIR</b> HOUSTON, TX Toward performances and educational and community outreach programs by a professional choral ensemble	2011	105,000	35,000
<b>HOUSTON EARLY MUSIC</b> HOUSTON, TX Toward presenting early vocal, instrumental and chamber music performed by both acclaimed and emerging soloists and ensembles	2012	20,000	10,000
<b>HOUSTON FRIENDS OF CHAMBER MUSIC INC.</b> HOUSTON, TX Toward bringing world-renowned touring chamber music ensembles to Houston, presenting master classes and demonstrations, and providing free or discounted tickets to students and seniors	2011	50,000	25,000
<b>HOUSTON GRAND OPERA ASSOCIATION, INC.</b> HOUSTON, TX Toward the Making a Difference Nexus Initiative, a large-scale effort to expand and diversify audiences	2008	5,000,000	500,000
Toward commissioning new work for the 2013-14 season, in honor of Larry R. Faulkner's service with Houston Endowment	2012	200,000	200,000
<b>HOUSTON INTERNATIONAL DANCE COALITION</b> HOUSTON, TX Toward Dance Salad Festival, a weeklong presentation by local, national and international companies, and toward community outreach programs throughout the year	2011	90,000	30,000
<b>HOUSTON MASTERWORKS CHORUS, INC.</b> HOUSTON, TX Toward choral music performances with full orchestral accompaniment	2012	35,000	20,000
<b>HOUSTON METROPOLITAN DANCE CENTER INC.</b> HOUSTON, TX Toward presenting contemporary dance performances and providing training for children, teens and adults	2012	70,000	35,000
Toward building studios, offices, storage space and conference rooms in a new facility for dance training programs for children, teens, adults and the Center's professional dance company	2012	125,000	0
<b>HOUSTON REPERTOIRE BALLET</b> HOUSTON, TX Toward performances and educational programs for young dancers in northwest Harris County	2011	20,000	10,000
<b>HOUSTON SYMPHONY SOCIETY</b> HOUSTON, TX Toward a plan to reach financial stability	2010	5,000,000	1,000,000
<b>INPRINT INC.</b> HOUSTON, TX Toward creative writing programs and presentations that promote the literary arts	2011	100,000	50,000
<b>INTERACTIVE THEATER COMPANY</b> HOUSTON, TX Toward engaging, educating and inspiring students through interactive plays that support elementary school curriculum	2012	40,000	20,000
<b>KAREN STOKES DANCE</b> HOUSTON, TX Toward modern dance performances, new choreography and educational outreach	2011	25,000	10,000

GRANTEE & PURPOSE	YEAR APPROVED	TOTAL GRANT	2012 ALLOCATION
<b>LAWNDALE ART AND PERFORMANCE CENTER</b> HOUSTON, TX Toward contemporary visual art exhibitions by regional artists, residency programs and educational events	2010	130,000	65,000
Toward contemporary visual art exhibitions by regional artists, residency programs and educational events	2012	130,000	0
<b>LEE COLLEGE</b> BAYTOWN, TX Toward professional staff to develop audiences and expand programming at the college's Performing Arts Center	2011	232,673	75,558
<b>MAIN STREET THEATER AT AUTRY HOUSE</b> HOUSTON, TX Toward classical and contemporary theatrical productions and educational programs and performance opportunities for young people	2012	150,000	75,000
<b>MENIL FOUNDATION INC.</b> HOUSTON, TX Toward preserving and exhibiting the art collection of John and Dominique de Menil and presenting programs, publications and exhibitions of artists other than those in the collection	2012	300,000	100,000
<b>THE MERCURY BAROQUE ENSEMBLE</b> HOUSTON, TX Toward performances of Baroque music using period instruments and historically accurate performance methods	2011	150,000	75,000
<b>MILLER THEATRE ADVISORY BOARD INC.</b> HOUSTON, TX Toward planning and presenting free performances of music, dance, theater and film at Miller Outdoor Theatre in Hermann Park	2012	200,000	100,000
<b>MUSEUM OF CULTURAL ARTS HOUSTON</b> HOUSTON, TX Toward a project manager to oversee the development of community-based public art projects	2011	55,000	20,000
<b>THE MUSEUM OF FINE ARTS, HOUSTON</b> HOUSTON, TX Toward collecting, exhibiting, preserving and interpreting visual art	2012	200,000	100,000
<b>MUSIC IN CONTEXT</b> HOUSTON, TX Toward performances of chamber music from a wide range of styles and eras on historically appropriate instruments using original scores	2012	20,000	10,000
<b>MUSIQA</b> HOUSTON, TX Toward a musical ensemble that presents contemporary classical music and educational programs	2012	90,000	45,000
<b>NAMELESS SOUND</b> HOUSTON, TX Toward presenting contemporary music and providing art education programs to children in public schools, community centers and homeless shelters, and toward a development position to help advance the organization	2011	75,000	40,000

	GRANTEE & PURPOSE	YEAR APPROVED	TOTAL GRANT	2012 ALLOCATION
	<b>OPERA IN THE HEIGHTS</b> HOUSTON, TX Toward a full-time managing director	2011	90,000	60,000
	Toward presenting affordable, fully staged and costumed operas, and toward outreach programs	2011	130,000	65,000
	<b>ORANGE SHOW FOUNDATION</b> HOUSTON, TX Toward preserving and exhibiting The Orange Show monument and the Beer Can House, toward presenting the Houston Art Car Parade, and toward educational programs that promote visionary art	2010	150,000	75,000
30	<b>REVELS HOUSTON INC.</b> HOUSTON, TX Toward promoting the understanding of cultural traditions through interactive performances of song, dance, music and stories	2012	25,000	17,500
ARTS & CULTURE	<b>RIVER OAKS CHAMBER ORCHESTRA</b> HOUSTON, TX Toward classical orchestral concerts for children and adults	2011	80,000	40,000
	<b>SEVERAL DANCERS CORE</b> HOUSTON, TX Toward contemporary dance performances, educational programs and community outreach	2011	50,000	25,000
	<b>SOCIETY FOR THE PRESERVATION AND ENCOURAGEMENT OF BARBERSHOP QUARTET SINGING IN AMERICA</b> HOUSTON, TX Toward preserving and presenting a capella, close-harmony singing through educational outreach and performances by the Houston Tidelanders	2012	15,000	5,000
	<b>SOUTHWEST ALTERNATE MEDIA PROJECT INC.</b> HOUSTON, TX Toward promoting the creation and appreciation of film, video and new media through presentations and educational programs, and toward implementing a strategic plan	2011	80,000	35,000
	<b>SPACETAKER</b> HOUSTON, TX Toward support services for local arts organizations and assistance to help artists manage and advance their careers	2011	120,000	60,000
	<b>STAGES INC.</b> HOUSTON, TX Toward producing and presenting new and established theatrical works and offering internships and master classes for students	2012	225,000	75,000
	<b>TEXAS ACCOUNTANTS &amp; LAWYERS FOR THE ARTS</b> HOUSTON, TX Toward a consultant to review the organization's practices and to draft a strategic plan	2012	21,000	21,000
	Toward free legal and accounting services for artists and arts organizations	2012	50,000	25,000
	<b>TEXAS MEDICAL CENTER ORCHESTRA</b> HOUSTON, TX Toward classical music performances by volunteer musicians who are primarily health care professionals	2012	22,500	7,500
	<b>TEXAS REPERTORY THEATRE COMPANY INC.</b> HOUSTON, TX Toward a professional theater company in northwest Houston	2012	25,000	25,000



JESSE JONES chaired the 1936 Texas Centennial, the state's commemoration of its independence from Mexico 100 years before, and envisioned permanent shrines throughout the state that would inspire and educate people about Texas history and culture. He said, "[The Centennial] can be made as comprehensive and as magnificent and as fascinating as we are willing to back our imaginations with money and effort. It will involve the employment of the best historians, and the best artists, the best sculptors and the best scenario writers, as well as the very earnest attention of leaders in all lines of enterprise and business." Following his lead, the Centennial planners placed statues and monuments throughout Texas, including the "Texianic" Art Deco exposition center in Dallas and the San Jacinto Monument at the San Jacinto Battleground.



In 1939, Houston Endowment made its first grant to the **San Jacinto Museum of History Association** and has supported the monument and the museum ever since.



Houston Endowment has helped preserve many of Galveston's historic treasures. In 1961, the foundation contributed to the restoration of the **Rosenberg Library**—one of the state's oldest operating libraries—after Hurricane Carla damaged it, then stepped in again in 2009 and 2012 to remedy damage caused to the library by Hurricane Ike. In 1972, Houston Endowment began supporting the **Galveston Historical Foundation's** efforts to preserve the Strand and Galveston's historic homes, and later helped fund the restoration of the 1877 tall ship *Elissa*.

In 1995, when researchers discovered French explorer René-Robert Cavelier, Sieur de La Salle's shipwrecked *La Belle*, Houston Endowment donated \$330,000 to the **Texas Historical Commission** to secure the site and assist with excavation. The foundation also supported the excavation of La Salle's Fort St. Louis, the earliest European settlement along the Gulf Coast.



In 2011, Houston Endowment helped **Sam Houston State University** restore and preserve the campus's 1852 Austin Hall, the oldest continuously used higher education facility in the United States west of the Mississippi River.



Typically, the only projects Houston Endowment funds outside of greater Houston are those that have profound statewide historical significance.



With assistance from a 2011 grant, structures on the Bernardo Plantation, the first large-scale plantation established in Texas, were excavated by the **Texas Historical Commission** and showed how enslaved workers made profound contributions to the state's economic growth and to its struggle for independence.



In 2008, the foundation contributed \$1 million to **Old Spanish Missions, Inc.** to help restore the four historic pre-colonial missions established along the San Antonio River by the Spanish as they moved into Texas from Mexico and South America in the 18th century.



The **Heritage Society** received its first grant in 1956 to collect, preserve and exhibit structures that celebrate the city's diverse history through a unique collection of historic homes and buildings in downtown's Sam Houston Park.

**Preservation Houston**, formerly the Greater Houston Preservation Alliance and a grant recipient since 1992, helps create economic value and a strong sense of community in the city through the preservation of Houston's cultural resources, particularly its architecturally and historically important buildings. Significantly, Preservation Houston has been instrumental in strengthening preservation ordinances in Houston.



Houston Endowment helps preserve and stimulate appreciation of Houston's past.



The 1926 Julia Ideson Library building is one of downtown Houston's historic crown jewels. It served as the city library's main branch until the Jesse H. Jones Library building opened across the plaza from it in 1976. Houston Endowment made \$1 million gifts to the **Julia Ideson Library Preservation Partners** in 2008 and 2010 to renovate and expand the library according to architect Ralph Adams Cram's original plans. The two library buildings sit in the heart of downtown Houston, where Jesse Jones built his wealth through buildings, banks and a newspaper, which he ultimately donated to Houston Endowment.

GRANTEE & PURPOSE	YEAR APPROVED	TOTAL GRANT	2012 ALLOCATION
<b>THEATER LAB HOUSTON</b> HOUSTON, TX Toward presenting contemporary plays	2011	55,000	25,000
<b>THEATRE UNDER THE STARS INC.</b> HOUSTON, TX Toward musical theater productions and educational and community outreach programs	2012	300,000	100,000
<b>UNIVERSITY OF HOUSTON</b> HOUSTON, TX Toward maximizing the impact of, and increasing accessibility to, UH Arts by unifying and coordinating the university's art schools, programs and presentations	2012	1,510,000	565,000
<b>UNIVERSITY OF HOUSTON CLEAR LAKE</b> HOUSTON, TX Toward engaging and increasing audiences for art programs in the Bay Area	2010	400,000	150,000
<b>TOTAL—CREATION</b>			\$ 7,291,558
<b>Culture</b>			
<b>ASIA SOCIETY TEXAS CENTER</b> HOUSTON, TX Toward expanding staff, programming and membership associated with the opening of the Center's new facility	2011	\$ 1,700,000	\$ 700,000
<b>CHILDREN'S MUSEUM INC.</b> HOUSTON, TX Toward general operating support	2011	300,000	100,000
<b>DALLAS FOUNDATION A TX NONPROFIT CORPORATION</b> DALLAS, TX Toward "The Man From Wharton," a full-length documentary film about playwright and screenwriter Horton Foote	2012	100,000	100,000
<b>DANCE OF ASIAN AMERICA</b> HOUSTON, TX Toward promoting cultural appreciation through Chinese dance and providing young dancers with professional training and performance opportunities	2012	30,000	0
<b>HOLOCAUST MUSEUM HOUSTON</b> HOUSTON, TX Toward exhibitions and outreach programs about the Holocaust and other genocides	2011	150,000	75,000
<b>HOUSTON ARTS ALLIANCE</b> HOUSTON, TX Toward researching, documenting, preserving and presenting information about the city's cultural and ethnic diversity through the City Folklife and Traditional Arts Program	2011	80,000	80,000
<b>HOUSTON FESTIVAL FOUNDATION INC.</b> HOUSTON, TX Toward developing strategic plans to improve the operations and presentation of the Houston International Festival	2012	25,000	25,000
<b>HOUSTON MUSEUM OF AFRICAN AMERICAN CULTURE</b> HOUSTON, TX Toward organizational development	2012	50,000	50,000
Toward opening costs for a museum that focuses on the African-American experience through exhibitions, symposia, performances and events	2012	70,000	70,000

GRANTEE & PURPOSE	YEAR APPROVED	TOTAL GRANT	2012 ALLOCATION
<b>HOUSTON MUSEUM OF NATURAL SCIENCE</b> HOUSTON, TX Toward presenting and interpreting natural science through a permanent collection, temporary traveling exhibitions and educational programs	2012	300,000	100,000
<b>HOUSTON ZOO, INC.</b> HOUSTON, TX Toward fostering appreciation, knowledge and care of the natural world through exhibits featuring 6,000 animals, educational programs and conservation partnerships  Toward constructing a two-acre gorilla habitat in the African Forest exhibit	2011  2012	200,000  5,000,000	100,000  0
<b>JOHN P. MCGOVERN MUSEUM OF HEALTH &amp; MEDICAL SCIENCE</b> HOUSTON, TX Toward exhibits and educational programs that encourage the appreciation of the human body, health and science	2011	200,000	100,000
<b>MANNED SPACE FLIGHT EDUCATION FOUNDATION INCORPORATED</b> HOUSTON, TX Toward a daylong visit to Space Center Houston for low-income schoolchildren that includes interactive science, math and technology educational experiences and information about the U.S. space program  Toward expanding the public's understanding and appreciation of the nation's space program by updating the Orbiter, a full-size space shuttle replica that will allow visitors to simulate and experience shuttle flight operations	2011  2012	105,000  150,000	35,000  0
<b>MULTICULTURAL EDUCATION AND COUNSELING THROUGH THE ARTS</b> HOUSTON, TX Toward year-round after-school arts, social and cultural programs for at-risk inner-city youth	2011	100,000	50,000
<b>PROJECT ROW HOUSES</b> HOUSTON, TX Toward public art and educational programs that promote neighborhood revitalization, historic preservation, community engagement and African-American history and culture	2010	200,000	100,000
<b>ROTHKO CHAPEL</b> HOUSTON, TX Toward cultural arts programs and marketing efforts	2012	50,000	50,000
<b>TEXAS FOLKLIFE RESOURCES</b> AUSTIN, TX Toward promoting, presenting and documenting Texas culture through exhibitions, performances, residencies, apprenticeships and educational programs in Houston	2011	90,000	30,000
<b>VOICES BREAKING BOUNDARIES</b> HOUSTON, TX Toward a multidisciplinary arts organization that connects diverse ethnic and cultural communities and raises awareness of social and political issues through artistic expression	2011	60,000	30,000
<b>TOTAL—CULTURE</b>			\$ 1,795,000

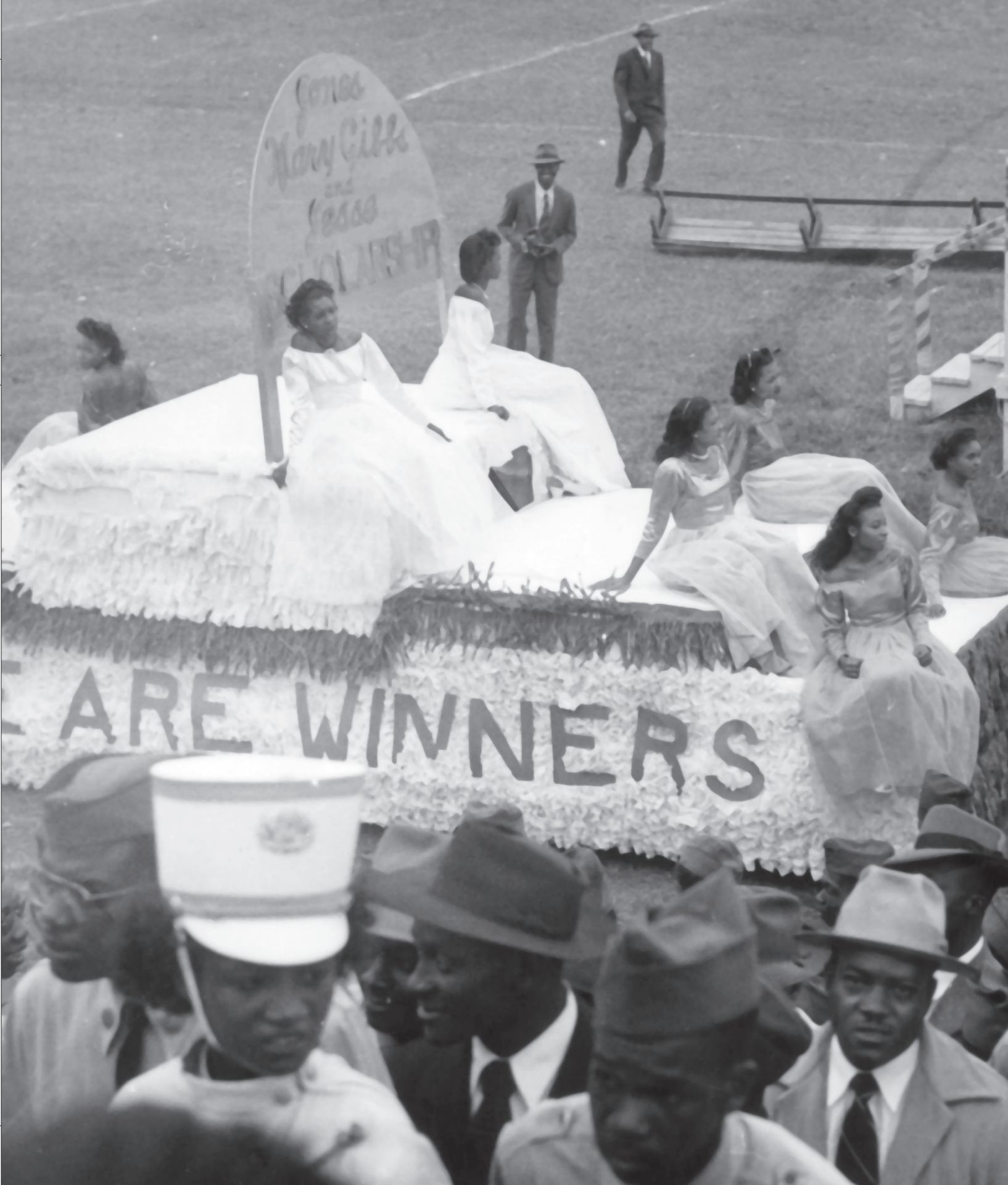
GRANTEE & PURPOSE	YEAR APPROVED	TOTAL GRANT	2012 ALLOCATION
<b>History</b>			
<b>GALVESTON HISTORICAL FOUNDATION INC.</b> GALVESTON, TX Toward preserving and promoting the architectural, cultural and maritime history of Galveston Island through stewardship, preservation, interpretation, advocacy and community events Toward restoring the 1877 tall ship <i>Elissa</i>	2011	\$ 200,000	\$ 100,000
	2012	700,000	700,000
<b>GREATER HOUSTON PRESERVATION ALLIANCE INC.</b> HOUSTON, TX Toward the preservation and appreciation of Houston's architectural, cultural and historical resources Toward upgrading the Museum of Houston's Web site and developing interactive exhibits	2011	150,000	50,000
	2011	195,000	125,000
<b>HOUSTON ARTS AND MEDIA</b> HOUSTON, TX Toward film, video, books, projects and events that present and preserve Houston's history and culture	2012	30,000	15,000
<b>LYNDON BAINES JOHNSON FOUNDATION</b> AUSTIN, TX Toward renewing permanent exhibits in the Lyndon Baines Johnson Presidential Library, in honor of Larry R. Faulkner's service with Houston Endowment	2012	500,000	500,000
<b>MUSEUM OF PRINTING HISTORY</b> HOUSTON, TX Toward preserving, exhibiting and demonstrating artifacts that show the importance of printing to the development of the civilized world and to the advancement of freedom and liberty	2010	150,000	75,000
	2012	130,000	0
<b>ROSENBERG LIBRARY ASSOCIATION</b> GALVESTON, TX Toward restoration of one of the oldest public libraries in Texas	2012	250,000	250,000
<b>SAN JACINTO MUSEUM OF HISTORY ASSOCIATION</b> LA PORTE, TX Toward collecting and preserving materials and presenting educational programs and exhibitions about the early history and culture of Texas	2011	150,000	75,000
<b>SUGAR LAND HERITAGE FOUNDATION</b> SUGAR LAND, TX Toward designing a history museum in the closed Imperial Sugar refinery building and hiring staff to inventory, exhibit and store historic documents and artifacts	2012	135,000	135,000
<b>TOTAL—HISTORY</b>			\$ 2,025,000

GRANTEE & PURPOSE	YEAR APPROVED	TOTAL GRANT	2012 ALLOCATION
<b>Strategic Partnership</b>			
<b>GRANTMAKERS IN THE ARTS</b>			
SEATTLE, WA			
Toward a workshop in Houston to help funders understand and improve the financial stability of the local nonprofit arts sector	2012	\$ 10,000	\$ 10,000
Toward the 2014 Grantmakers in the Arts conference in Houston	2012	150,000	0
<b>HOUSTON ARTS ALLIANCE</b>			
HOUSTON, TX			
Toward supporting and expanding programs that help small to midsize arts organizations grow and succeed	2011	520,000	230,000
<b>INDEPENDENT ARTS COLLABORATIVE</b>			
HOUSTON, TX			
Toward a detailed business plan, an architectural competition and consulting costs to develop a multi-use facility for small and midsize arts organizations	2011	600,000	400,000
Toward the Midtown Arts & Theatre Center Houston (MATCH), a multi-use facility in Midtown for small and midsize arts organizations	2012	6,000,000	6,000,000
<b>MID-AMERICA ARTS ALLIANCE</b>			
KANSAS CITY, MO			
Toward improving the finances, governance, planning and impact of greater Houston's small and midsize arts and cultural institutions through a three-year intensive professional training and peer support program	2011	1,410,000	485,000
<b>PEW CHARITABLE TRUSTS</b>			
PHILADELPHIA, PA			
Toward implementing the Cultural Data Project in Houston, an online management tool that tracks and delivers information about the financial, operational and programmatic activities of the local arts and culture sector and its associated individual organizations	2012	150,000	50,000
<b>TEXAS CULTURAL TRUST COUNCIL</b>			
AUSTIN, TX			
Toward distributing to policymakers and the public information and data about the importance of the arts in education and their impact on the local and state economies	2012	100,000	100,000
<b>TOTAL—STRATEGIC PARTNERSHIP</b>			\$ 7,275,000
<b>TOTAL—ARTS &amp; CULTURE</b>			\$ 19,510,058



Congress  
Mary Gibbs  
and  
Jesse  
Scholarship

ARE WINNERS





# EDUCATION **75**

Improving  
opportunities  
for **75** years  
for more students  
to attend and  
complete college



JESSE JONES left school after the eighth grade and forever felt challenged by his lack of formal education. MARY GIBBS JONES attended college at a time when few women finished high school. From their experiences, they both understood the importance of education. In response to a 1924 request for a donation from The University of Texas at Austin, Mr. Jones explained, "My own educational training was decidedly limited, and I have keenly felt it a great handicap, and when I can do so, I am glad to assist other ambitious young men and women in equipping themselves for life's problems with a college training." Since its inception, the largest portion of Houston Endowment's annual grants has gone toward education.



The foundation's first scholarship program named for Mary Gibbs Jones was established in 1945 at **Texas Woman's University** to, according to the contract, "assist worthy girls who want...an education but are not in a position to fully pay their way through college."



In 1946, Houston Endowment established \$50,000 scholarship programs at **Prairie View A&M University**, a historically black college near Houston. Upon notification, W.R. Banks, the school's principal, wrote to the Joneses, "You will never know how far-reaching this generous expression of your interest in our people will be."

In 1955, Houston Endowment donated \$1 million to **Rice University** to build the Mary Gibbs Jones College so that women, for the first time, could live on campus.



Houston Endowment's first scholarships were divided equally between men and women; 10 percent went to minority students.



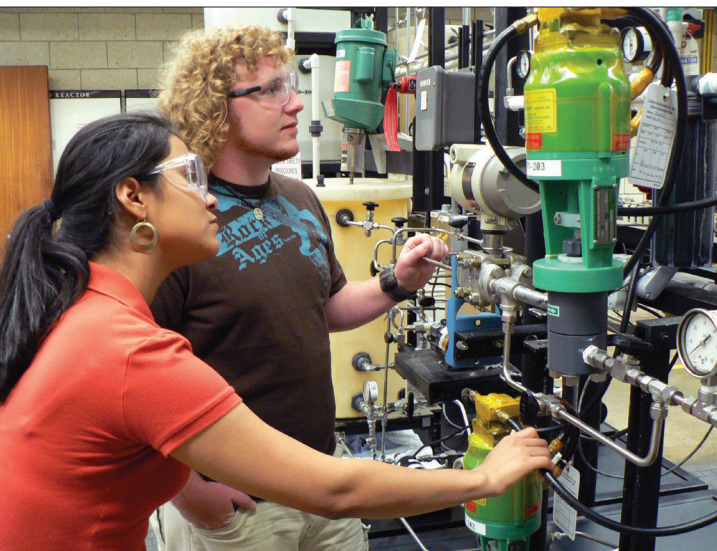
Soon after the **University of Houston-Downtown** opened in 1974 as an open-admission university, Houston Endowment established an endowed scholarship program, contributed toward facilities and later supported the university's Learners Community, a continuum of multilayered linked courses and services that encourage students to stay in school and graduate.

Houston Endowment donated to **Texas Southern University's** first building in 1945 and recently contributed \$2.74 million toward the Urban Academic Village, a residential community where almost half of the entering freshmen live and become immersed in university life so they can focus on learning and earning a college degree.



The foundation responded as Houston evolved into one of the most ethnically diverse regions in the United States and education needs changed.

Houston Endowment helps create school environments that encourage students to attend and succeed in college.



In 2006 and 2007, Houston Endowment provided support to include seven local community colleges and four universities in ***Achieving the Dream***, a national program to improve student success by providing resources colleges need to implement strategies that keep at-risk students in school through graduation or until they transfer to a four-year university.



Houston Endowment provided funds to implement the **National College Access Network's *Preparing to Dream*** initiative in five area school districts to encourage a college-going culture in K-12 classrooms, particularly for low-income, minority students.

Houston Endowment recognizes that what happens to children during their first years determines how well they do in school and in life.



**Collaborative for Children**, a Houston Endowment grant recipient since 2002, has enlisted partner organizations to improve early education, family support and access to health care so children in low-income households are ready for school by kindergarten, reading and math literate by third grade, graduate from high school and succeed in college.

Since 1993, Houston Endowment has supported **Teach For America's** efforts to recruit and train outstanding recent college graduates, who commit to teach for at least two years in schools that serve low-income, at-risk kids.



In 2006, Houston Endowment donated \$10 million each to **YES Prep Public Schools** and **KIPP**, free, open-enrollment, college preparatory public charter schools that change the status quo in low-income neighborhoods by increasing the number of students who graduate from college, succeed and contribute to their community.



The foundation has invested nearly \$16 million since 2007 to develop the innovative **Rice Education Entrepreneurship Program** at **Rice University's** Jesse H. Jones Graduate School of Business to develop school principals who can transform schools and students' lives.



To determine the percentage of Texas's eighth grade students who go on to earn a postsecondary certificate or degree within six years of their high school graduation, and to establish a reliable measure of how well young people are being prepared for the future, Houston Endowment commissioned the **National Center for Higher Education Management Systems** to conduct a cohort analysis of every student who started eighth grade in a Texas public school from 1996 to 1998. The study, which was published in 2012, found that only 21.9 percent completed a certificate or degree program in Texas. (The national average is 29.3 percent.) For African-American and Hispanic students, the number dropped to less than 12 percent. The study has provided the community with a base number from which to measure its progress in sending more students to college who graduate with a certificate or degree, one of Houston Endowment's principal goals since 1937.



# EDUCATION

Effective Leadership	\$ 9,021,000
Jones Scholars Program	5,198,047
Program Innovation	10,117,000
Other	1,000,000
<b>Total</b>	<b>\$ 25,336,047</b>



GRANTEE & PURPOSE	YEAR APPROVED	TOTAL GRANT	2012 ALLOCATION
<b>Effective Leadership</b>			
<b>ASSOCIATION OF GOVERNING BOARDS OF UNIVERSITIES AND COLLEGES</b> WASHINGTON, DC Toward improving college and university governance in Texas through educational programs for regents, trustees, presidents, chancellors and senior administrators	2011	\$ 30,000	\$ 10,000
<b>EDUCATION PIONEERS INC.</b> HOUSTON, TX Toward attracting talented graduate students to careers in public education through summer fellowships in Houston area public schools and education reform organizations	2010	300,000	150,000
<b>INSTITUTE FOR PRODUCTIVITY IN EDUCATION</b> AUSTIN, TX Toward improving public education by promoting cost-effectiveness and productivity; disseminating data on school districts' financial performance; fostering discussion and research on financial effectiveness; and recommending improvements in the financial accountability of public schools	2012	35,000	0
<b>TEACH FOR AMERICA INC.</b> HOUSTON, TX Toward recruiting, training and placing outstanding teachers in Houston schools, and toward programs that encourage area alumni to assume leadership positions in public schools	2012	600,000	200,000
<b>TEXAS CHARTER SCHOOLS ASSOCIATION</b> AUSTIN, TX Toward improving charter schools through support services and by advocating for policies that promote equitable funding for facilities and operations	2011	150,000	75,000
<b>TEXAS INSTITUTE FOR EDUCATION REFORM</b> AUSTIN, TX Toward sustaining and improving advances in standards-based reform and advocating for high standards and accountability within Texas's public education system	2012	75,000	0
<b>UNIVERSITY OF HOUSTON</b> HOUSTON, TX Toward general operating support for the Center for Research, Evaluation and Advancement of Teacher Education (CREATE)  Toward improving the quality and effectiveness of university-based teacher preparation programs in Texas through the research program at the Center for Research, Evaluation and Advancement of Teacher Education (CREATE)	2012	376,000	188,000
	2012	1,124,000	1,124,000
<b>WILLIAM MARSH RICE UNIVERSITY</b> HOUSTON, TX Toward the Rice Education Entrepreneurship Program, a public school leadership academy that allows full-time teachers and administrators to pursue either a two-year MBA or a one-year fellowship in the Executive Education training program at the Jesse H. Jones Graduate School of Business  Toward an annual training institute to help superintendents effectively manage and lead complex school systems in Houston and Texas	2011	3,475,000	1,957,000
	2012	117,000	117,000
Toward the Rice Education Entrepreneurship Program, a public school leadership academy that allows full-time teachers and administrators to pursue either a two-year MBA or a one-year fellowship in the Executive Education training program at the Jesse H. Jones Graduate School of Business	2012	5,200,000	5,200,000
<b>TOTAL—EFFECTIVE LEADERSHIP</b>			\$ 9,021,000

GRANTEE & PURPOSE	YEAR APPROVED	TOTAL GRANT	2012 ALLOCATION
<b>Jesse H. and Mary Gibbs Jones Scholars Program</b>			
<b>JESSE H. AND MARY GIBBS JONES SCHOLARS PROGRAM</b> HOUSTON, TX Toward college and university scholarships for graduating Harris County high school seniors	2012	\$ 5,198,047	\$ 5,198,047
<b>TOTAL—JESSE H. AND MARY GIBBS JONES SCHOLARS PROGRAM</b>			\$ 5,198,047
<b>Program Innovation</b>			
<b>ACHIEVING THE DREAM INC.</b> SILVER SPRING, MD Toward sustaining, managing and implementing institutional improvement initiatives that improve student success at greater Houston community colleges and four-year universities	2011	\$ 500,000	\$ 250,000
<b>AVID CENTER</b> SAN DIEGO, CA Toward a pilot project with Rice University and the College Board to increase the college readiness of at-risk students in 10 Houston area public school districts	2012	2,285,000	1,120,000
<b>CENTER FOR EFFECTIVE PHILANTHROPY INC.</b> CAMBRIDGE, MA Toward improving student success by conducting a survey to gauge the attitudes and perceptions of Aldine ISD ninth through 12th grade students	2011	36,000	36,000
Toward YouthTruth, a survey that collects and analyzes data from students to help improve the effectiveness of those who fund and lead schools, and toward administering the survey in greater Houston area secondary schools	2012	300,000	100,000
<b>CENTER FOR HOUSTON'S FUTURE INC.</b> HOUSTON, TX Toward staff to organize efforts to win the "Talent Dividend," a cash prize awarded by CEO for Cities to the city that shows the greatest increase in postsecondary certificates or degrees earned over a four-year period	2012	25,000	25,000
<b>CEOS FOR CITIES NFP</b> CLEVELAND, OH Toward the 2012 National Talent Dividend Network meeting in Houston, a gathering of urban leaders working to increase college completion throughout the nation	2012	15,000	15,000
<b>CITIZEN SCHOOLS INC.</b> HOUSTON, TX Toward closing the opportunity and achievement gap by extending the learning day in Houston's high-need middle schools	2012	75,000	75,000
<b>COLLABORATIVE FOR CHILDREN</b> HOUSTON, TX Toward developing with experts a comprehensive plan for high quality early childhood education	2012	100,000	100,000
Toward "College Bound from Birth," a multi-year, neighborhood-based project to increase high school graduation rates and college attendance through programs that increase school readiness by kindergarten; that achieve reading and math literacy by third grade; that support parents, caregivers and teachers; and that provide children with access to health care	2012	1,000,000	500,000

GRANTEE & PURPOSE	YEAR APPROVED	TOTAL GRANT	2012 ALLOCATION
<b>COMMUNITIES FOUNDATION OF TEXAS INC.</b> DALLAS, TX Toward supporting Educate Texas's efforts to promote college readiness and postsecondary school access and success through policy, advocacy and communication strategies	2012	750,000	250,000
<b>FAMILIES EMPOWERED</b> HOUSTON, TX Toward providing families with accurate and accessible information about high quality schools and connecting them to the schools they select	2012	200,000	100,000
<b>GREATER HOUSTON COMMUNITY FOUNDATION</b> HOUSTON, TX Toward supporting K-12 public education reform through the Strategic Education Fund	2012	60,000	30,000
<b>HOUSTON HISPANIC FORUM</b> HOUSTON, TX Toward Career and Education Day, a free daylong event that provides students and parents with information about college admission, financial aid and career options	2011	45,000	15,000
<b>HOUSTON INDEPENDENT SCHOOL DISTRICT FOUNDATION</b> HOUSTON, TX Toward the Apollo 20 initiative to improve the district's 20 lowest-performing schools	2011	6,000,000	2,000,000
<b>POSSE FOUNDATION</b> NEW YORK, NY Toward establishing an office in Houston to recruit, train and support area high school students participating in a college preparation and success program	2011	300,000	100,000
<b>REASONING MIND INC.</b> HOUSTON, TX Toward improving students' success in pre-algebra mathematics through a Web-based curriculum that emphasizes conceptual understanding and computational skills, in honor of Larry R. Faulkner's service with Houston Endowment	2012	150,000	150,000
Toward improving students' success in pre-algebra mathematics through a Web-based curriculum that emphasizes conceptual understanding and computational skills	2012	1,500,000	1,000,000
<b>STRIVE FOR COLLEGE COLLABORATIVE</b> ATHERTON, CA Toward providing low-income Houston area students with the guidance to apply to, enroll in and pay for college	2012	250,000	125,000
<b>TEXAS EARLY CHILDHOOD EDUCATION COALITION</b> AUSTIN, TX Toward research and advocacy that improves the quality, accessibility and affordability of early childhood education, and toward strengthening the organization's infrastructure	2012	40,000	40,000
<b>TEXAS SOUTHERN UNIVERSITY</b> HOUSTON, TX Toward developing the Urban Academic Village, a pilot project to improve student engagement, retention and success	2010	2,740,000	690,000
<b>THOMAS B. FORDHAM INSTITUTE</b> WASHINGTON, DC Toward market research in Houston to determine parents' educational preferences for their children	2012	71,000	71,000
<b>UNIVERSITY OF HOUSTON</b> HOUSTON, TX Toward "All Kids Alliance," an emerging coalition that produces regional educational data and provides improvement models for public education that support student success from cradle to career	2012	100,000	100,000

GRANTEE & PURPOSE	YEAR APPROVED	TOTAL GRANT	2012 ALLOCATION
<b>THE UNIVERSITY OF TEXAS AT AUSTIN</b> AUSTIN, TX Toward increasing college readiness in Houston area high school students and improving student success in community college remedial courses	2011	10,536,000	3,225,000
<b>TOTAL—PROGRAM INNOVATION</b>			<b>\$ 10,117,000</b>
<b>Other</b>			
<b>GRANTMAKERS FOR EDUCATION</b> PORTLAND, OR Toward the 2013 Grantmakers for Education conference in Houston	2012	\$ 25,000	\$ 0
<b>POST OAK SCHOOL</b> BELLAIRE, TX Toward operating support, in honor of D. Kent Anderson's service with Houston Endowment	2012	30,000	30,000
<b>ST. FRANCIS EPISCOPAL DAY SCHOOL</b> HOUSTON, TX Toward operating support, in honor of D. Kent Anderson's service with Houston Endowment	2012	60,000	60,000
<b>WILLIAM MARSH RICE UNIVERSITY</b> HOUSTON, TX Toward the new building for the Susanne M. Glasscock School of Continuing Studies, in honor of D. Kent Anderson's service with Houston Endowment	2012	910,000	910,000
<b>TOTAL—OTHER</b>			<b>\$ 1,000,000</b>
<b>TOTAL—EDUCATION</b>			<b>\$ 25,336,047</b>

## JESSE H. AND MARY GIBBS

# JONES SCHOLARS PROGRAM

Houston Endowment established the Jesse H. and Mary Gibbs Jones Scholars Program in 1958, when it gave \$2,000 scholarships to graduating seniors in high schools in the Houston Independent School District. The program later grew to include all Harris County school districts, and Jones Scholars are now eligible to receive up to \$16,000 in scholarship funds toward a baccalaureate degree. Jones Scholars are nominated by each high school, and a Rotary Club of Houston committee makes final selections based on academic achievement, economic need, leadership skills, community service and character. Although Houston Endowment furnishes the funds, it does not accept applications or select Jones Scholars. Seniors in all participating high schools in Harris County can apply at their school to become a Jones Scholar.

Since the program's inception 54 years ago, 10,831 area students have been named Jones Scholars. While universities in Texas have attracted the largest number, Jones Scholars have matriculated at approximately 350 schools throughout the nation, have pursued careers in fields of every endeavor and have enhanced life in the communities where they live.

In 2012, 321 graduates from high schools in greater Houston were selected as Jones Scholars.

**ALDINE INDEPENDENT SCHOOL DISTRICT**

**ALDINE HIGH SCHOOL**

Carlos J. Aguilar  
Erendira Garcia  
Martin Rojas  
Yara I. Valladares

**GEORGE W. CARVER HIGH SCHOOL**

Te-Rue V. Eng

**DWIGHT D. EISENHOWER HIGH SCHOOL**

Karla F. Arredondo  
Priscilla N. Le  
Jenney Ling

**W. T. HALL EDUCATION CENTER**

Alexandria L. Hummel

**DOUGLAS MACARTHUR HIGH SCHOOL**

Alexandria J. Allen  
Mateo Aviles  
Sherman R. Belton  
Wil J. Rios

**CHESTER W. NIMITZ HIGH SCHOOL**

Tonee D. Anderson  
Perla Martinez  
Monica A. Melendez  
Keldrick J. Nwajei

**ALIEF INDEPENDENT SCHOOL DISTRICT**

**ALIEF ELSIK HIGH SCHOOL**

Marcus A. McCarty  
Kimberly T. Nguyen  
Quyem H. Nguyen  
Tuyet-Nhi E. Tran

**ALIEF HASTINGS HIGH SCHOOL**

Abiola O. Awobona  
Wilson Chiu  
Chau V. Nguyen  
Phuong Giao T. Nguyen

**ALIEF KERR HIGH SCHOOL**

Helen H. Tang

**ALIEF TAYLOR HIGH SCHOOL**

Lynn T. Phan  
Kathy X. Trieu  
Rachel Wang

**CHANNELVIEW INDEPENDENT SCHOOL DISTRICT**

**CHANNELVIEW HIGH SCHOOL**

Eric J. Gernon  
Jacob Hernandez  
Alexander Q. Tran

**CLEAR CREEK INDEPENDENT SCHOOL DISTRICT**

**CLEAR BROOK HIGH SCHOOL**

Sultan M. Jaouhari  
Van-Anh Mai  
Nguyen K. Pham  
Ellen Zhou

**CLEAR CREEK HIGH SCHOOL**

Kelly L. Bosworth  
Sarah E. Colvin  
Michael S. Manriquez

**CLEAR LAKE HIGH SCHOOL**

Shamsa A. Ali  
Emily C. Cassidy  
Matthew J. McGee  
Solomon P. Reynolds  
Vinamrata Singal

**CLEAR SPRINGS HIGH SCHOOL**

Ummia M. Ali  
Della M. Goings  
Felicia R. Merchant  
Michael L. Mortensen

**CROSBY INDEPENDENT SCHOOL DISTRICT**

**CROSBY HIGH SCHOOL**

Maria A. Belyaeva  
Erin V. Valentine

**CYPRESS-FAIRBANKS INDEPENDENT SCHOOL DISTRICT**

**CY-FAIR HIGH SCHOOL**

Zachary M. Crowley  
Alexis A. Larry  
Margaret A. Naderpelt  
Conner A. Patrick

**CYPRESS CREEK HIGH SCHOOL**

Thalia Garcia  
Sadiah J. Inman  
Elliott C. Joern  
Matthew D. Minner  
Michael J. Ratliff

**CYPRESS FALLS HIGH SCHOOL**

Mahrukh M. Ali  
Javier E. Chica  
Joanne P. Modeste  
Lauren A. Thompson

**CYPRESS LAKES HIGH SCHOOL**

Andrea Garcia Jimenez  
Victor A. Kitmanyen  
YuJun Lin  
Jenny M. Quintero

**CYPRESS RANCH HIGH SCHOOL**

Erica E. Harris  
Tristan Le  
Gerardo Mendoza, Jr.

**CYPRESS RIDGE HIGH SCHOOL**

My Lai  
 Thu Q. Mai  
 Bao T. Nguyen  
 Tyler J. Tweedel

**CYPRESS SPRINGS HIGH SCHOOL**

Sonia M. Messina  
 Tam H. Nguyen  
 Alejandra A. Rivera

**CYPRESS WOODS HIGH SCHOOL**

Gabriel Cabanas  
 Omar Fierros  
 Sandra M. Fisher  
 Emma G. Polefko

**JERSEY VILLAGE HIGH SCHOOL**

Citlalli Alvarez  
 Lauren L. Caton  
 Joseph M. Sliepka  
 Simon A. Tesfalul

**LANGHAM CREEK HIGH SCHOOL**

Katherine M. Castano  
 Gabriela A. Kawas  
 Mary Nguyen  
 Jessica A. Szejer

**DEER PARK INDEPENDENT SCHOOL DISTRICT****DEER PARK HIGH SCHOOL**

Christa R. George  
 Elizabeth M. Martinez  
 Austin M. Montgomery  
 Erin V. Shamburger  
 Whitney L. Whiteman

**GALENA PARK INDEPENDENT SCHOOL DISTRICT****GALENA PARK HIGH SCHOOL**

Raul A. Gutierrez  
 Isis P. Ramirez

**NORTH SHORE HIGH SCHOOL**

Johnny W. Chatman, II  
 Terray A. Franklin  
 Jasmine M. Morehead  
 Viet H. Nguyen  
 Daniel J. Richard  
 Samuel J. Rocha

**GOOSE CREEK CONSOLIDATED INDEPENDENT SCHOOL DISTRICT****GOOSE CREEK MEMORIAL HIGH SCHOOL**

Juan E. Medina  
 Rajdeepsingh Waghela

**ROBERT E. LEE HIGH SCHOOL**

Arianna Y. Mata  
 Guadalupe J. Ramirez

**ROSS S. STERLING HIGH SCHOOL**

Farah Ashraf  
 Deborah L. Madera  
 Jarrod M. Strokos

**HOUSTON INDEPENDENT SCHOOL DISTRICT****STEPHEN F. AUSTIN HIGH SCHOOL**

Amity C. Ayala  
 Lorena Lozano  
 Edna C. Rodriguez  
 Yvonne Zurita

**BELLAIRE HIGH SCHOOL**

Hongyu Chen  
 Weiting Ji  
 Manusha Karki  
 Daniel Lee  
 Judy M. Liu  
 Savjona Rexho  
 Avery R. Snuggs  
 Michelle Victoria  
 Regan Wang

**CARNEGIE VANGUARD HIGH SCHOOL**

Yihui Yang

**CHALLENGE EARLY COLLEGE HIGH SCHOOL**

Joe Resendiz

**CESAR E. CHAVEZ HIGH SCHOOL**

Norma Arroyo  
 Jesus R. Moreno  
 Nhi N. Nguyen  
 Thao T. Nguyen  
 Amy J. Pacheco  
 Maria F. Reza

**JEFFERSON DAVIS HIGH SCHOOL**

Myriam M. Compean  
 John A. Fuentes  
 Luis M. Hernandez  
 Bethzabe Martinez

**DEBAKEY HIGH SCHOOL FOR HEALTH PROFESSIONS**

Cassandra E. Garcia  
 Van Tran

**EAST EARLY COLLEGE HIGH SCHOOL**

Lan T. Giap

**E. L. FURR HIGH SCHOOL**

Lauren W. L. Ashmore  
Ana C. Martinez

**HIGH SCHOOL FOR LAW ENFORCEMENT**

Nallely I. Prudencio-Olvera

**HIGH SCHOOL FOR THE PERFORMING & VISUAL ARTS**

Kirk E. Murrell  
Abigail H. Tesfaye

**SAM HOUSTON HIGH SCHOOL**

Adrian S. Garcia  
Deyanira G. Lucatero  
Hamid H. Mayorga  
Miriam Oregon  
Rajankumar Patel  
Rebeca Rodriguez

**JESSE H. JONES HIGH SCHOOL**

Rodrick D. Hawkins

**BARBARA JORDAN HIGH SCHOOL FOR CAREERS**

Esther R. Kentish  
Aaliyah C. Mason

**KASHMERE HIGH SCHOOL**

Kirsten C. Pettitt

**MIRABEAU B. LAMAR HIGH SCHOOL**

Selina Khwaja  
Alyssa R. Lehmann  
Carmin A. Munoz Lavanderos  
David Nguyen  
Brittany M. Ripperger  
Steven Sannoh

**ROBERT E. LEE HIGH SCHOOL**

Shariyar R. Ali  
Celeste M. Carpio  
Meron S. Haile  
Xiomara Y. Torres

**JAMES MADISON HIGH SCHOOL**

Jorge A. Alvarado-Vasquez  
Chibuzo J. Isikwe  
Raquel Rincon  
Richard M. Russell  
Jairo Vera

**CHARLES H. MILBY HIGH SCHOOL**

Adrian Arevalo  
Christopher Garcia  
Guadalupe Orozco  
Jennifer Phuong  
Margarita Reza

**REACH CHARTER HIGH SCHOOL**

Marisa D. Mariscal

**JOHN H. REAGAN HIGH SCHOOL**

Liliana Balboa  
Thesly S. Imboden  
Aide J. Siller  
Joshua L. Supercinski

**G. C. SCARBOROUGH HIGH SCHOOL**

Delvin W. Taylor  
Victor M. Williams

**SHARPSTOWN HIGH SCHOOL**

Quyen N. Le  
Eric A. Martinez  
Matthew A. Vasquez

**ROSS S. STERLING HIGH SCHOOL**

Dayza J. Monson  
Maritza R. Ruiz  
George A. Smith, Jr.

**S. P. WALTRIP HIGH SCHOOL**

Stephany Cadena  
Raven M. Garza  
Dylan E. Lochridge-Fletcher  
Brittany N. Metzler

**BOOKER T. WASHINGTON HIGH SCHOOL**

Frankie C. Mojekwu  
Carlos D. Salamanca

**WESTBURY HIGH SCHOOL**

Wuenseslao Hernandez  
John M. Montgomery  
Tuyet L. Phung  
Kyndall R. Prawl  
Erin D. Spann

**WESTSIDE HIGH SCHOOL**

Krystal C. Chang  
Chia-Hsiang Chen  
Nada G. Ismail  
Harlin Oh  
Meelad Ranaiefar  
Khadijah Z. Ray  
Nicole C. Syder

**PHILLIS WHEATLEY HIGH SCHOOL**

Kevin Chan  
LaMonte D. Evans

**EVAN E. WORTHING HIGH SCHOOL**

Princess W. Rolle  
Alicia R. Smith

**JACK YATES HIGH SCHOOL**

Tyler T. Anderson  
Eric V. Johnson

**HUFFMAN INDEPENDENT SCHOOL DISTRICT****WILLIE J. HARGRAVE HIGH SCHOOL**

Allison R. Cobb  
Reagan N. Smith

**HUMBLE INDEPENDENT SCHOOL DISTRICT****ATASCOCITA HIGH SCHOOL**

Karly K. Lewison  
Christopher A. Ramsey  
Brian-Tyler G. St. Hilaire  
Lauren N. Worley

**HUMBLE HIGH SCHOOL**

Holli N. Campbell  
Antranedra L. Williams

**KINGWOOD HIGH SCHOOL**

Natalie N. Anderson  
Charlotte E. Christian  
Agatha M. Molski  
Jeffery Saeling

**KINGWOOD PARK HIGH SCHOOL**

Micah T. Inman  
Madalyn T. Nguyen

**SUMMER CREEK HIGH SCHOOL**

Rawand A. Abdelghani  
Kabria N. Davis

**KATY INDEPENDENT SCHOOL DISTRICT****CINCO RANCH HIGH SCHOOL**

Yuxuan Liu  
Amber L. Wang  
Megan R. Wood  
Brandon E. Wyatt

**KATY HIGH SCHOOL**

Courtney L. Brown  
Arno J. Dunstatter  
Heather R. Freeman  
Kristina M. Yia

**MAYDE CREEK HIGH SCHOOL**

Crystal J. Chen-Goodspeed  
Fidel A. Leon  
Jonathan P. Sharp

**MORTON RANCH HIGH SCHOOL**

Tamara V. Davis  
Tia L. Davis  
Edel J. Lueso  
Lovesimrjit S. Sandhu

**SEVEN LAKES HIGH SCHOOL**

Yeo Won Ahn  
Abhishek Garg  
Zachary J. Le Blanc  
Rhett C. Moffett  
Danh Tran

**JAMES E. TAYLOR HIGH SCHOOL**

Radina Khalid  
Logan R. Langford  
Elizabeth K. Neville  
Anna J. Redhair

**KLEIN INDEPENDENT SCHOOL DISTRICT****KLEIN HIGH SCHOOL**

Ahmed M. Abdellatif  
Claire A. Anderson  
Jillayne R. Blanchard  
Dylan M. Reeves  
Rong G. Xu

**KLEIN COLLINS HIGH SCHOOL**

Kanika Bhandari  
Debjani Chakravarty  
Jill M. Chipley  
Mariam Hussain  
Koneshia D. Ringer

**KLEIN FOREST HIGH SCHOOL**

Rumesha Ahmad  
Elizabeth Diaz  
Joseph V. Do  
Erin M. Lott  
Madiha Mohiuddin

**KLEIN OAK HIGH SCHOOL**

Julia C. Cottle  
Thu Nhi T. Le  
Adriana Montes  
Courtney M. Nguyen  
Luis A. Urrea

**LA PORTE INDEPENDENT SCHOOL DISTRICT****LA PORTE HIGH SCHOOL**

Gabriel J. Aguilar  
Jazmin E. Gutierrez  
Nimra Haroon

**NORTH FOREST INDEPENDENT SCHOOL DISTRICT****NORTH FOREST HIGH SCHOOL**

Sara E. Taylor

**PASADENA INDEPENDENT SCHOOL DISTRICT****J. FRANK DOBIE HIGH SCHOOL**

Duyen TT. Dinh  
Phuong K. Ly  
Ahmad O. Mohamad  
Trang T. Pham  
Carol T. Tran

**PASADENA HIGH SCHOOL**

Maricarmen Medina  
Amanda R. Perez  
Sergio Rodriguez

**PASADENA MEMORIAL HIGH SCHOOL**

Erika J. Garza  
Blake K. Huddleston  
Yvette A. Isidori  
Christine P. Pham

**SAM RAYBURN HIGH SCHOOL**

Yesenia Cordova  
Fernando Gonzalez  
Lacie L. Villarreal

**SOUTH HOUSTON HIGH SCHOOL**

Connie N. Le  
Susana Reyna  
An H. Tran

**SHELDON INDEPENDENT SCHOOL DISTRICT****C. E. KING HIGH SCHOOL**

Elizabeth G. Howell  
Nicolle C. Schachtner

**SPRING INDEPENDENT SCHOOL DISTRICT****ANDY DEKANEY HIGH SCHOOL**

Kayler C. Stephens  
Tayler N. Stephens  
Nguyen K. Tran

**SPRING HIGH SCHOOL**

Omar I. Ali  
Elizabeth T. Razo  
Sarah M. Thompson  
Matthew R. Vanderworp

**WESTFIELD HIGH SCHOOL**

Breanna N. Bradshaw  
Ngoc D. Khuu  
Christine P. Le

**CARL WUNSCHER HIGH SCHOOL**

Sahil P. Patel  
Rachel C. Reed  
Kim L. Vu Tran

**SPRING BRANCH INDEPENDENT SCHOOL DISTRICT****MEMORIAL HIGH SCHOOL**

Elizabeth Y. Cai  
Kendall A. Crouch  
Lindsey J. Limbaugh

**NORTHBROOK HIGH SCHOOL**

Andy Lara  
Paula I. Martinez

**SPRING WOODS HIGH SCHOOL**

Francisco J. Gutierrez  
Phuong K. Ngo

**STRATFORD HIGH SCHOOL**

Glenn Frutiz  
Thomas A. Fuller  
Respina Vaezian

**WESTCHESTER ACADEMY**

Jesus C. Sifuentes

**TOMBALL INDEPENDENT SCHOOL DISTRICT****TOMBALL HIGH SCHOOL**

Cooper W. Cason  
Lacey R. Easley  
Kyle C. Harden  
Ashley M. Leibham







# ENVIRONMENT 75

Cultivating a livable  
community for  
**75** years with a  
healthy, sustainable  
environment



JESSE JONES grew up on a tobacco farm in rural Tennessee, swam in sparkling rivers, breathed clean air and knew that his family's livelihood depended on a steady climate and rich soil. Later as an adult, he and MRS. JONES hunted and fished in some of the most beautiful and pristine spots in the world. Houston Endowment understood the importance of having access to nature and in the early years donated toward conservation and parks. That focus slowly grew until Houston Endowment established a program area in the 1990s to support organizations devoted to creating an environment where everyone can enjoy fresh air, clean water and open natural spaces.

In 2004 and 2005, Houston Endowment donated a total of \$10 million toward acquiring land and designing, developing and operating Discovery Green. Now more than a million people each year come downtown to go outdoors, where the **Discovery Green Conservancy** manages the park and has developed it into an outdoor gym, art gallery, performance hall and community center wrapped in nature.



**SPARK**, a grant recipient since 1993, has added 2,000 acres of parkland to Harris County by transforming more than 200 school playgrounds into neighborhood parks.



As the region's population has multiplied over the years, so has its need for fun, safe and fulfilling places for people to enjoy the outdoors.

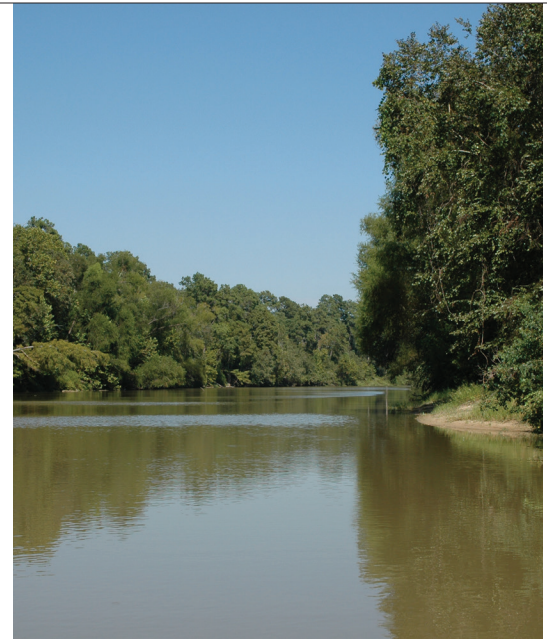
Houston Endowment helped **Hermann Park Conservancy** renovate the Jones Reflection Pool and build the Greenway Pedestrian Trail and the Centennial Garden, the final component of the master plan that for almost 20 years has guided the revitalization, maintenance and future of Hermann Park so Houstonians can enjoy it for many years to come.



In 2011, the foundation donated \$3 million to help **Buffalo Bayou Partnership** develop 2.3 miles along the bayou between Shepherd Drive and Sabine Street into a signature green space and recreational area that will serve nearby residents and the thousands of visitors who come to the area each year to enjoy large outdoor events.

Houston Endowment's efforts to preserve and improve the natural environment became more robust in the 1990s when it established a program area to protect the area's land, air and water.

Houston Endowment contributed \$7.5 million toward the **Houston Parks Board's Bayou Greenways 2020** initiative, which will add 4,900 acres of parkland, connect 77 existing parks, provide 300 miles of off-street trails—the most extensive off-street trail system in any U.S. city—and build storm water and detention systems adjacent to Harris County's major bayous.



**Bayou Land Conservancy**, a grant recipient since 1999, works with landowners who agree to set aside their land permanently from future commercial development and to maintain the natural state of their property. Bayou Land Conservancy focuses primarily on land in watersheds that feed into Lake Houston, Houston's primary source of drinking water, and holds 48 easements that encompass more than 10,000 acres.



Houston Endowment helped fund the **Nature Conservancy of Texas**'s recent purchase of the Nash Prairie, one of the most pristine remnants of coastal prairie in the world, located only 50 miles southwest of Houston. More than 300 species of native plants and grasses grow on the never plowed Nash Prairie, making it a living museum, laboratory and seed bank.

A grant recipient since 1996, the **Katy Prairie Conservancy** strives to preserve 50,000 acres of contiguous prairie in west Houston to reduce downstream flooding by absorbing storm water; improve water quality by filtering pollutants and sediments; increase water quantity by recharging aquifers; and serve as a recreational area for people and as an irreplaceable habitat for wildlife and native plants.



In 2011, Houston Endowment supported the development of [houstoncleanairnetwork.com](http://houstoncleanairnetwork.com), a Web-based map created by the **American Lung Association**, **Air Alliance Houston** and the **University of Houston** that allows anyone to enter an address, determine real-time ozone levels and gauge their risk when planning outdoor activities anywhere in greater Houston.

Protecting people's health from air pollution is a primary goal of Houston Endowment's environment program.



Since 2005, Houston Endowment has donated \$2.7 million to the **Environmental Defense Fund's Clean Air for Houston** plan to initiate partnerships with government, industry and nonprofit agencies who implement solutions to reduce pollution from the Houston Ship Channel, in hot spot neighborhoods and from area school buses.

Houston Endowment has donated \$4.85 million since 2007 to support **Rice University's** Severe Storm Prediction, Education, and Evacuation from Disasters (SSPEED) Center. Scientists, architects, engineers, hydrologists, land managers, transportation experts and emergency response teams are creating tools to predict storm surge flooding, to provide evacuation alerts and procedures, and to protect the coast and make it more resilient during severe storms.



Since 2001, Houston Endowment has invested over \$5 million in ***The Texas Living Waters Project***, a centerpiece of the foundation's environment program. A collaboration among the **National Wildlife Federation**, the **Galveston Bay Foundation** and the **Lone Star Chapter of the Sierra Club**, the project has successfully highlighted water management issues throughout the state and driven significant policy changes that protect Texas rivers, bays and estuaries by promoting environmental flow protection, groundwater management and water conservation. In 2007, the Federation and its partners achieved a historic milestone when Texas lawmakers established a process to set standards for reserving water for environmental purposes.



# ENVIRONMENT

Land	\$ 8,122,500
Air	1,135,000
Water	620,000
Resources	450,000
Built Environment	2,098,000
Domestic Animals	185,000
<b>Total</b>	<b>\$ 12,610,500</b>



GRANTEE & PURPOSE	YEAR APPROVED	TOTAL GRANT	2012 ALLOCATION
<b>Land</b>			
<b>BAYOU LAND CONSERVANCY</b> HOUSTON, TX Toward permanently protecting land through conservation easements, particularly river and bayou corridors that feed into the Lake Houston watershed, and toward No Child Left Inside, an educational program for middle and high school science students	2010	\$ 200,000	\$ 100,000
Toward permanently protecting land through conservation easements, particularly river and bayou corridors that feed into the Lake Houston watershed	2012	300,000	0
Toward acquiring and preserving a 100-acre tract along Cypress Creek that contains a rare stand of post oak trees and undisturbed archaeological sites and that will connect existing trails and green spaces	2012	500,000	0
<b>BUFFALO BAYOU PARTNERSHIP</b> HOUSTON, TX Toward transforming the 160-acre Shepherd-to-Sabine stretch of Buffalo Bayou into a signature green space and recreational area	2011	3,000,000	1,000,000
<b>CONSERVATION HISTORY ASSOCIATION OF TEXAS</b> AUSTIN, TX Toward "Texas Landscape Project," a map-based book and Web site that depicts and explains key changes in Texas's landscape and environment	2012	22,500	22,500
<b>GREENS BAYOU CORRIDOR COALITION</b> HOUSTON, TX Toward improving parks, trails, water quality and flood mitigation in the Greens Bayou watershed	2011	100,000	50,000
<b>GULF COAST BIRD OBSERVATORY INC.</b> LAKE JACKSON, TX Toward restoring, protecting and acquiring bird habitat around the Gulf of Mexico and coordinating efforts with a network of 70 regional organizations  Toward the new Avian Conservation Science Center to house administrative, education, outreach and research activities	2012	150,000	75,000
	2012	200,000	200,000
<b>HERMANN PARK CONSERVANCY</b> HOUSTON, TX Toward creating a space for people to gather and linger and educating the community about horticulture by designing and constructing the 15-acre Centennial Garden, the last major component of the park's 1995 master plan	2012	3,000,000	3,000,000
<b>HOUSTON ARBORETUM &amp; NATURE CENTER</b> HOUSTON, TX Toward protecting and enhancing the 155-acre urban nature sanctuary and educating people about the natural environment	2012	300,000	100,000
<b>HOUSTON AUDUBON SOCIETY</b> HOUSTON, TX Toward acquiring and restoring habitat, operating sanctuaries and advocating for policies that benefit wildlife and conservation	2011	200,000	100,000
<b>HOUSTON PARKS BOARD</b> HOUSTON, TX Toward developing portions of Sims and White Oak Bayous as part of a plan to add 4,900 acres of parkland to Houston, connect 77 existing parks, provide 300 miles of off-street trails and build stormwater detention systems adjacent to Harris County's major bayous	2011	7,500,000	2,500,000
<b>LAND TRUST ALLIANCE INCORPORATED</b> WASHINGTON, DC Toward ensuring the permanence of protected lands through a conservation defense insurance program that will fund the legal costs of defending land trusts when they are violated or challenged in court	2012	250,000	250,000

75 ENVIRONMENT

GRANTEE & PURPOSE	YEAR APPROVED	TOTAL GRANT	2012 ALLOCATION
<b>NATIONAL AUDUBON SOCIETY INC.</b> AUSTIN, TX Toward conserving and protecting bird and barrier island habitat along the Gulf Coast in Brazoria, Galveston and Chambers Counties	2011	150,000	75,000
<b>NATIONAL PARKS CONSERVATION ASSOCIATION</b> DALLAS, TX Toward creating the Lone Star Coastal National Recreation Area to protect and manage a mosaic of lands along the upper Texas Gulf Coast for environmental, social and economic benefits	2012	200,000	100,000
<b>THE NATURE DISCOVERY CENTER INC.</b> BELLAIRE, TX Toward hiring a park steward and implementing a plan that improves and maintains the grounds as a living classroom for visitors	2011	120,000	40,000
<b>SPARK</b> HOUSTON, TX Toward constructing community parks on Houston's public school campuses	2011	255,000	85,000
<b>STUDENT CONSERVATION ASSOCIATION INC.</b> ARLINGTON, VA Toward providing low-income youth in Houston with opportunities offered by area organizations to participate in a summer work program on local conservation projects	2012	50,000	50,000
<b>TEXAS LAND CONSERVANCY</b> AUSTIN, TX Toward a land stewardship director to conduct outreach, evaluate projects and monitor and manage protected properties in greater Houston  Toward protecting Brazos and Trinity River watersheds through conservation easements and acquisitions	2010	50,000	25,000
	2012	120,000	0
<b>TEXAS LAND TRUST COUNCIL</b> AUSTIN, TX Toward advancing permanent land conservation by providing education, advocacy and technical assistance to area land trusts	2012	70,000	35,000
<b>TEXAS LEAGUE OF CONSERVATION VOTERS EDUCATIONAL FUND</b> AUSTIN, TX Toward a survey to gauge public support for protecting and developing state and local parks and funding their acquisition, maintenance and operation	2012	25,000	0
<b>TEXAS RICE INDUSTRY COALITION FOR THE ENVIRONMENT</b> PIERCE, TX Toward restoring and preserving native prairie and freshwater wetland ecosystems in the Anahuac, Brazoria and San Bernard National Wildlife Refuges	2012	150,000	75,000
<b>TREES FOR HOUSTON</b> HOUSTON, TX Toward obtaining, planting and maintaining trees in greater Houston's public spaces	2011	200,000	100,000
<b>THE TRUST FOR PUBLIC LAND</b> HOUSTON, TX Toward structuring, negotiating and completing real estate transactions that create parks, greenways and protected natural areas for permanent protection and public access	2011	200,000	100,000
<b>TURTLE ISLAND RESTORATION NETWORK</b> HOUSTON, TX Toward conservation programs along the upper Texas Gulf Coast to protect the endangered Kemp's ridley sea turtle and other turtles in the Gulf of Mexico	2011	80,000	40,000
<b>TOTAL—LAND</b>			<b>\$ 8,122,500</b>

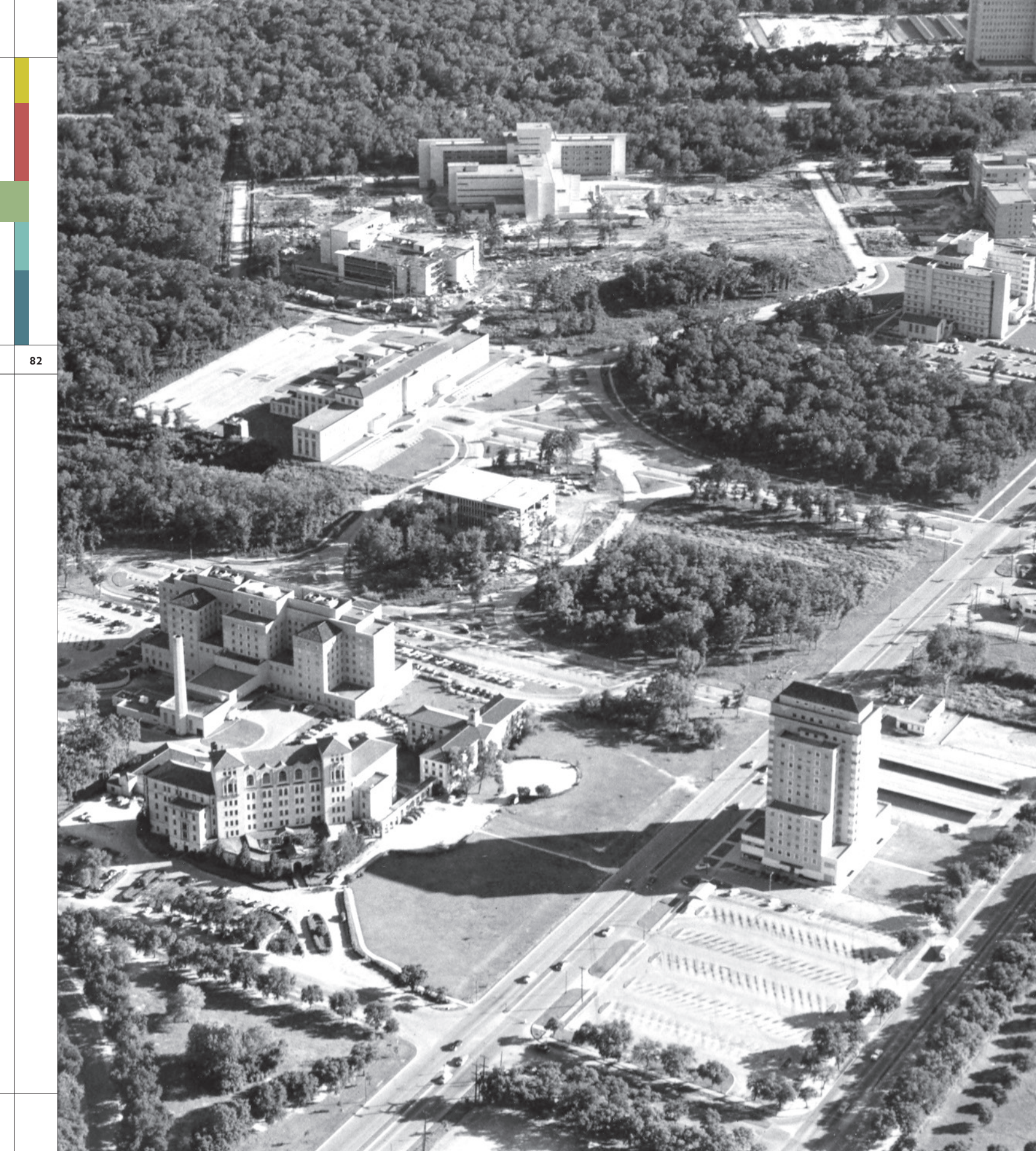
GRANTEE & PURPOSE	YEAR APPROVED	TOTAL GRANT	2012 ALLOCATION
<i>Air</i>			
<b>AIR ALLIANCE HOUSTON</b> HOUSTON, TX Toward reducing air pollution and protecting public health through community outreach, engagement with industry, educational programs and advocacy	2012	\$ 300,000	\$ 150,000
<b>AMERICAN LUNG ASSOCIATION OF THE PLAINS-GULF REGION INC.</b> DALLAS, TX Toward developing a real-time, Web-based air quality map that informs residents about ozone hot spots	2011	442,000	170,000
<b>ENVIRONMENTAL DEFENSE FUND INCORPORATED</b> AUSTIN, TX Toward expanding Clean Air for Houston, an initiative to reduce pollution from the Houston Ship Channel and in hot spot neighborhoods	2012	600,000	300,000
<b>ENVIRONMENTAL INTEGRITY PROJECT</b> WASHINGTON, DC Toward reducing air pollution from Houston area petrochemical plants by supporting the development, improvement, enforcement and monitoring of air emission rules and regulations	2012	215,000	115,000
<b>PUBLIC CITIZEN FOUNDATION, INC.</b> AUSTIN, TX Toward a coalition to reduce air pollution from the Port of Houston by highlighting the impact of pollution on communities adjacent to the Port and engaging local residents in efforts to improve air quality <i>(Another portion of this grant is in Health under Prevention.)</i>	2012	630,000	210,000
<b>WILLIAM MARSH RICE UNIVERSITY</b> HOUSTON, TX Toward identifying the link between the occurrence of certain air quality conditions and cardiac arrests and asthma attacks so emergency medical service responders can be appropriately deployed	2011	380,000	190,000
<b>TOTAL—AIR</b>			\$ 1,135,000

GRANTEE & PURPOSE	YEAR APPROVED	TOTAL GRANT	2012 ALLOCATION
<b>Water</b>			
<b>BAYOU PRESERVATION ASSOCIATION INC.</b> HOUSTON, TX Toward a water quality program director	2011	\$ 25,000	\$ 25,000
Toward protecting and improving local waterways through advocacy, education and restoration	2011	150,000	75,000
<b>GALVESTON BAY FOUNDATION</b> WEBSTER, TX Toward a development director to expand visibility and support for the organization	2011	120,000	40,000
Toward preserving, protecting and enhancing the bay through advocacy, conservation, education and research	2011	200,000	100,000
<b>NATIONAL WILDLIFE FEDERATION</b> AUSTIN, TX Toward implementing new state policies that protect Texas rivers, bays and estuaries by promoting environmental flow protection, groundwater management and water conservation in and around Harris County	2011	700,000	350,000
<b>TEXAS AGRILIFE EXTENSION SERVICE, TEXAS A&amp;M UNIVERSITY SYSTEM</b> COLLEGE STATION, TX Toward conserving water and creating wildlife habitat in Houston by promoting sustainable residential, commercial and community landscapes through the WaterSmart program	2011	90,000	30,000
<b>TOTAL—WATER</b>			\$ 620,000
<b>Resources</b>			
<b>CITIZENS' ENVIRONMENTAL COALITION EDUCATIONAL FUND</b> HOUSTON, TX Toward a coalition that fosters education, collaboration and dialogue about environmental issues in greater Houston	2012	\$ 70,000	\$ 25,000
<b>ENVIRONMENT TEXAS RESEARCH AND POLICY CENTER INC.</b> AUSTIN, TX Toward promoting strengthened building energy code standards and encouraging the adoption of solar and energy efficiency technologies in greater Houston	2012	100,000	50,000
<b>HOUSTON ADVANCED RESEARCH CENTER</b> THE WOODLANDS, TX Toward texasclimatenews.org, a Web-based magazine about regional climate, energy and sustainability issues	2012	75,000	75,000
<b>TEXAS IMPACT EDUCATION FUND</b> AUSTIN, TX Toward developing issue papers and engaging and informing local and state leaders about the benefits of clean energy and energy efficiency through the Texas Clean Energy Coalition	2012	100,000	100,000
<b>UNIVERSITY OF HOUSTON</b> HOUSTON, TX Toward the Green Building Components Initiative, a program to design, develop and commercialize sustainable, renewable building components and systems for the architecture, engineering and construction industries	2010	400,000	200,000
<b>TOTAL—RESOURCES</b>			\$ 450,000

GRANTEE & PURPOSE	YEAR APPROVED	TOTAL GRANT	2012 ALLOCATION
<b>Built Environment</b>			
<b>GREATER EAST END MANAGEMENT DISTRICT</b> HOUSTON, TX Toward planning and implementing public space improvements in the East End through the Urban Village Initiative	2011	\$ 265,500	\$ 123,000
<b>HARRIS COUNTY HEALTHCARE ALLIANCE</b> HOUSTON, TX Toward the Harris County Obesity Collaborative, a collaboration among health, education, policymaking, business and parks organizations to assess the influences of the built environment, food access and public infrastructure on obesity and to mobilize policy actions to combat it <i>(Another portion of this grant is in Health under Prevention.)</i>	2011	1,250,000	500,000
<b>HOUSTON CLEAN CITY COMMISSION INC.</b> HOUSTON, TX Toward reducing urban blight through neighborhood beautification and cleanup projects and community education programs	2012	80,000	40,000
<b>HOUSTON TOMORROW</b> HOUSTON, TX Toward generating and distributing information and analysis about urban planning, land use, transportation, sustainability and regional growth	2010	200,000	100,000
Toward expanding the organization's scope, reach and influence and improving its ability to generate and distribute information and analysis about urban planning, land use, transportation, sustainability and regional growth	2010	200,000	100,000
Toward generating and distributing information and analysis about urban planning, land use, transportation, sustainability and regional growth	2012	200,000	0
<b>SCENIC TEXAS INC.</b> HOUSTON, TX Toward promoting sign control, billboard reduction, freeway landscaping, scenic byway development and enhanced design standards for streetscapes and public projects through research, education and advocacy	2011	100,000	50,000
<b>TEXAS SOUTHERN UNIVERSITY</b> HOUSTON, TX Toward building university- community partnerships to address environmental issues in local low-income and minority neighborhoods	2012	100,000	0
<b>URBAN HARVEST INC.</b> HOUSTON, TX Toward creating and sustaining community and school gardens and farmers markets, providing free and low-cost classes and advocating for policies and practices that increase access to nutritious food	2011	170,000	85,000
<b>WILLIAM MARSH RICE UNIVERSITY</b> HOUSTON, TX Toward the Severe Storm Prediction, Education, and Evacuation from Disasters Center, a cross-institutional, multidisciplinary team that determines and implements strategies that minimize the social, environmental and economic impact of rainfall, flooding and surges during severe storms	2011	3,200,000	1,100,000
<b>TOTAL—BUILT ENVIRONMENT</b>			\$ 2,098,000

GRANTEE & PURPOSE	YEAR APPROVED	TOTAL GRANT	2012 ALLOCATION
<b>Domestic Animals</b>			
<b>BRAZORIA COUNTY SOCIETY FOR THE PREVENTION OF CRUELTY TO ANIMALS</b> LAKE JACKSON, TX Toward reducing dog and cat overpopulation by providing access to low-cost spay and neuter services	2012	\$ 30,000	\$ 0
<b>CITIZENS FOR ANIMAL PROTECTION INC.</b> HOUSTON, TX Toward shelter, adoption and care for neglected, abused and homeless animals, and toward educational programs that promote responsible pet ownership	2011	50,000	25,000
<b>HOUSTON HUMANE SOCIETY</b> HOUSTON, TX Toward operating a full-service animal adoption and care facility and eliminating animal cruelty and overpopulation	2010	50,000	25,000
<b>HOUSTON SOCIETY FOR THE PREVENTION OF CRUELTY TO ANIMALS</b> HOUSTON, TX Toward rescue, shelter, foster care and adoption services for animals and educational programs for school students	2012	100,000	50,000
<b>SPAY-NEUTER ASSISTANCE PROGRAM INC.</b> HOUSTON, TX Toward a mobile clinic that provides free spay-neuter and immunization services to dogs and cats from low-income families	2011	255,000	85,000
<b>TOTAL—DOMESTIC ANIMALS</b>			\$ 185,000
<b>TOTAL—ENVIRONMENT</b>			<b>\$ 12,610,500</b>







# HEALTH 75

Advancing prevention,  
wellness and  
access to primary  
care for **75** years



As director general of military relief for the American Red Cross, JESSE JONES recruited thousands of nurses and doctors and organized ambulance networks to care for wounded soldiers and civilians in Europe during World War I. He also built rehabilitation centers in the U.S. to provide medical services for those fortunate enough to return home. MARY GIBBS JONES's father was a doctor, and she grew up watching him respond to the medical needs of the people in the small town of Mexia, where her family lived. From these experiences, the Joneses knew it was vital for people to have ready access to good health care.

Aware that the Texas Medical Center could not grow without an adequate supply of nurses, in 1949 Houston Endowment established a \$25,000 nursing scholarship program at the **University of Houston** when \$900 covered a student's room and board, tuition and books for one year. Houston Endowment also established a scholarship program to train nurses at **Texas Woman's University** in 1958.



The Texas Medical Center was established in 1945, and Houston Endowment followed with donations to **The Methodist Hospital** and **St. Luke's Episcopal Hospital** to help construct and equip their buildings and with donations to **Texas Children's Hospital** for operating support.



In 1952, Houston Endowment donated \$600,000 to the **Houston Academy of Medicine** to build the Jesse H. Jones Library, providing the medical community with a place to learn about the latest discoveries in medicine and surgery. It was the only building in Houston that Mr. Jones would allow to carry his name while he was alive.

Since its inception, Houston Endowment has responded to the changing and growing health needs that confront the people of greater Houston.



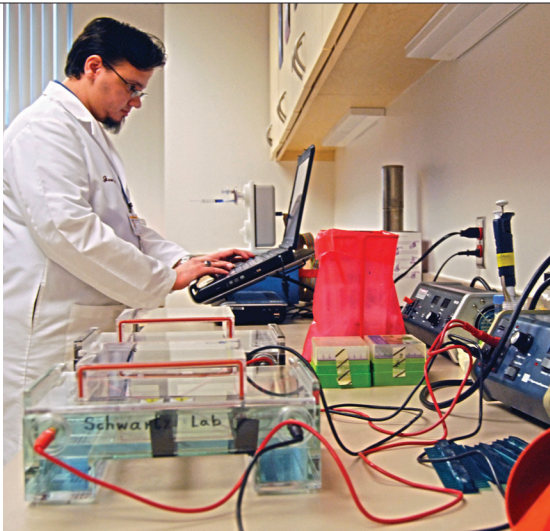
**The Institute for Rehabilitation and Research**, now affiliated with **Memorial Hermann Healthcare System**, received program support between 1967 and 1979. Recent grants have gone toward collaborative research focused on reversing the consequences of spinal cord injury and facility renovations to accommodate increased demand for its services and research.



**The University of Texas M.D. Anderson Cancer Center** received \$2 million in 2007 for radiochemistry equipment, making it the nation's largest academic facility for the research and production of imaging agents and the only one of its kind in Texas.

Houston Endowment helps build strong institutions that attract leaders in research.

In 2009, Houston Endowment helped **Prairie View A&M University** establish a doctoral program to train faculty who will in turn train more practicing nurses. The foundation recently donated \$800,000 to train nurses and advance nurse practitioners at the **University of Houston–Victoria**, both grants representing a strategic effort to expand access to primary care by supplying more health care providers in greater Houston.



Cardiovascular disease kills more people in the United States than any other disease, and Houston's **Texas Heart Institute** ranks as one of the top heart centers in the nation. Houston Endowment contributed \$3 million in the 1980s to help build its facilities, and between 2008 and 2010 it donated \$6 million to help build a team of scientists who have continued to accelerate advanced stem cell research and treatment.

Houston Endowment made its first grant to **Planned Parenthood Gulf Coast** in 1947 and recently donated \$2.5 million to accommodate the increased demand for affordable family planning and health care services.

Houston Endowment responds to urgent health demands that are sometimes at the forefront of social change.



Harris County had the second-highest incidence of polio in the nation, and in the 1950s Houston Endowment made substantial donations to help build and operate the **Hedgcroft Hospital and Rehabilitation Center** to care for children afflicted with the disease.

In response to an emerging life-threatening disease, Houston Endowment supported **AIDS Foundation Houston, Legacy Community Health Services** and **Bering Omega Community Services** with funding in 1991 when AIDS was in its infancy and misinformation had instilled fear in many.



Since 1955, the foundation has helped schoolchildren obtain vision services through its support of Prevent Blindness Texas, an affiliate of the **National Society to Prevent Blindness**. In 2012, Houston Endowment donated \$1.5 million to the **Houston Department of Health and Human Services Foundation's *See to Succeed*** program to consolidate efforts by provider and service groups so Houston will have a coordinated vision program that exponentially increases eye care for students.



To help combat obesity, in 2011 Houston Endowment donated \$2.5 million toward **Harris County Healthcare Alliance's** collaboration among health, education, policy, business and parks organizations that will assess the influence of the built environment, food access and public infrastructure on obesity and mobilize policy to combat it.

Houston Endowment supports collaborations that multiply efforts and results.



To reduce teen pregnancy, **The University of Texas Health Science Center at Houston** initiated a program to implement evidence-based strategies and interventions in schools and neighborhoods with the highest teen birthrates. In 2012, Houston Endowment donated \$6 million to help modify school curriculums and provide strategies for adults to address the critical issue.

A grant recipient since 1949, **Mental Health America of Greater Houston** increases access to mental health care treatment, promotes the early intervention and prevention of mental health problems, and increases the understanding of mental health as part of total health and wellness through advocacy, education and training programs.





**Texas One Voice**—a collaborative among more than 100 public, private and nonprofit organizations—helps ensure that the health and basic needs of all Texans are addressed through public policy and program initiatives. Houston Endowment donated \$300,000 in 2012 toward the **Behavioral Health Public Policy Initiative**, which will bring services to more people through a collaborative approach among mental health and substance abuse providers, advocates, family members and law enforcement officers.

Houston Endowment supports programs to improve both physical and mental health for the people of greater Houston.



Houston Endowment donated \$2 million in 2008 to **Christus Foundation for Healthcare** to help build a larger Midtown facility for the **San José Clinic**, Houston's original "safety-net" clinic. The Clinic shares the space with the Christus mobile van staff, who visit 20 sites per month to offer a full range of pediatric and adult health care screenings for uninsured and low-income people and to connect them with a medical home, typically a community clinic, many of which Houston Endowment supports.



In 2009, Houston Endowment contributed \$6 million to the **Harris County Healthcare Alliance** to help build and implement a coordinated delivery system throughout greater Houston that will improve and increase access to health care for the uninsured and underserved. The effort will align health care providers throughout the area and develop a true safety-net health system in greater Houston for those in need.



# HEALTH

Prevention	\$ 2,855,000
Primary Care	5,685,000
Other	2,615,000
<b>Total</b>	<b>\$ 11,155,000</b>



GRANTEE & PURPOSE	YEAR APPROVED	TOTAL GRANT	2012 ALLOCATION
<b>Prevention</b>			
<b>AIDS FOUNDATION HOUSTON INC.</b> HOUSTON, TX Toward services for people with HIV/AIDS and prevention programs for the community	2012	\$ 200,000	\$ 100,000
<b>C.G. JUNG EDUCATIONAL CENTER OF HOUSTON TEXAS</b> HOUSTON, TX Toward software for online courses, bookstore expansion and database management	2012	180,000	180,000
<b>CARING FOR CHILDREN FOUNDATION OF TEXAS INC.</b> DALLAS, TX Toward medical supplies for Care Van, a mobile immunization program that provides free vaccines for uninsured and medically underserved children in Houston	2012	30,000	15,000
<b>FUNDACION LATINO AMERICANA CONTRA EL SIDA INC.</b> HOUSTON, TX Toward reducing disease and crime through "Hablemos En Confianza," a program to strengthen parenting skills, increase knowledge about health issues and improve communication among families within the Hispanic community in the Gulfton area	2011	130,000	65,000
<b>HARMONY HOUSE INC.</b> HOUSTON, TX Toward preventing the spread of tuberculosis within the homeless community	2011	150,000	50,000
<b>HARRIS COUNTY HEALTHCARE ALLIANCE</b> HOUSTON, TX Toward the Harris County Obesity Collaborative, a collaboration among health, education, policymaking, business and parks organizations to assess the influences of the built environment, food access and public infrastructure on obesity and to mobilize policy actions to combat it <i>(Another portion of this grant is in Environment under Built Environment.)</i>	2011	1,250,000	500,000
<b>HOUSTON COUNCIL ON ALCOHOLISM AND DRUG ABUSE INC.</b> HOUSTON, TX Toward providing substance abuse treatment and related behavioral health services through community education, prevention programs, therapy and support during recovery	2012	75,000	75,000
<b>HOUSTON-HARRIS COUNTY IMMUNIZATION REGISTRY INC.</b> HOUSTON, TX Toward salary support for a development director to help build the organization's ability to increase immunization rates and eradicate vaccine-preventable diseases in Houston and Texas  Toward increasing immunization rates and eradicating vaccine-preventable diseases in Houston and Texas by expanding a registry, developing and coordinating educational programs and advocating for improved policies and practices  Toward increasing immunization rates and eradicating vaccine-preventable diseases through education, advocacy and support of best immunization practices	2010	100,000	40,000
	2010	200,000	100,000
	2012	260,000	0
<b>NATIONAL SOCIETY TO PREVENT BLINDNESS</b> HOUSTON, TX Toward vision screenings, eye exam referrals and vouchers for glasses for children ages six months to 18 years, and toward educational programs for students, parents and educators	2011	35,000	35,000

GRANTEE & PURPOSE	YEAR APPROVED	TOTAL GRANT	2012 ALLOCATION
<b>PUBLIC CITIZEN FOUNDATION, INC.</b> AUSTIN, TX Toward a coalition to reduce air pollution from the Port of Houston by highlighting the impact of pollution on communities adjacent to the Port and engaging local residents in efforts to improve air quality <i>(Another portion of this grant is in Environment under Air.)</i>	2012	120,000	80,000
<b>TEXAS CAMPAIGN TO PREVENT TEEN PREGNANCY INC.</b> AUSTIN, TX Toward preventing teen pregnancy in Houston and in Texas by developing and implementing a communications strategy that builds a constituency for improvements in policies, practices and programs	2012	40,000	0
<b>THE UNIVERSITY OF TEXAS HEALTH SCIENCE CENTER AT HOUSTON</b> HOUSTON, TX Toward improving public health by identifying unmet health needs and targeting resources through the Health of Houston Survey	2012	350,000	0
Toward reducing teen pregnancy by supplementing evidence-based health curriculums in middle schools with complementary community-wide strategies and interventions in areas with the highest teen birthrates <i>(Another portion of this grant is in Human Services under Children &amp; Youth.)</i>	2012	3,000,000	1,600,000
<b>THE WOMEN'S FUND FOR HEALTH EDUCATION AND RESEARCH</b> HOUSTON, TX Toward educational programs and advocacy that promote women's health	2012	30,000	15,000
<b>TOTAL—PREVENTION</b>			\$ 2,855,000
<h3>Primary Care</h3>			
<b>AIDS RESEARCH CONSORTIUM OF HOUSTON</b> HOUSTON, TX Toward providing research and treatment information to people with HIV/AIDS and linking them with medical and social services	2011	\$ 130,000	\$ 65,000
<b>ALBERT SCHWEITZER FELLOWSHIP INC.</b> HOUSTON, TX Toward fellowships to help graduate students develop skills and implement projects that improve health care services for underserved people in Houston and Galveston	2012	30,000	0
<b>ASIAN AMERICAN HEALTH COALITION OF THE GREATER HOUSTON AREA</b> HOUSTON, TX Toward expanding pediatric health care services at the Hope Clinic in southwest Houston	2012	325,000	175,000
<b>BE THE MATCH FOUNDATION</b> MINNEAPOLIS, MN Toward growing and improving Houston's marrow donor pool with younger donors through Be the Match on Campus, a college campus recruitment campaign	2012	15,000	0
<b>BERING OMEGA COMMUNITY SERVICES</b> HOUSTON, TX Toward dental care, adult daycare, financial assistance and residential and in-home hospice services for people affected by HIV/AIDS	2011	250,000	150,000

GRANTEE & PURPOSE	YEAR APPROVED	TOTAL GRANT	2012 ALLOCATION
<b>CHILDREN'S DEFENSE FUND</b> BELLAIRE, TX Toward linking eligible uninsured children and families to health coverage or a medical home, and providing families with the resources to manage their care and long-term coverage	2012	560,000	280,000
<b>CHRISTUS FOUNDATION FOR HEALTHCARE</b> HOUSTON, TX Toward expanding mobile clinic services that provide a full range of pediatric and adult health screenings for low-income and uninsured people	2011	175,000	50,000
<b>DEPRESSION AND BIPOLAR SUPPORT ALLIANCE DBSA GREATER HOUSTON</b> HOUSTON, TX Toward free facilitated support groups for people with depression and bipolar disorder, and toward educational outreach programs	2012	100,000	50,000
<b>EL CENTRO DE CORAZON</b> HOUSTON, TX Toward primary health care services for low-income and underinsured families in the East End	2010	300,000	150,000
<b>EYE CARE FOR KIDS FOUNDATION</b> HOUSTON, TX Toward providing free eye exams and glasses to low-income, uninsured children	2012	70,000	70,000
<b>FAMILY SERVICE CENTER AT HOUSTON AND HARRIS COUNTY</b> HOUSTON, TX Toward mental health counseling services for low-income individuals and families	2012	130,000	0
<b>FOURTH WARD CLINIC</b> HOUSTON, TX Toward primary health care services for low-income and underinsured people in central and north Houston  Toward primary health care services for low-income and underinsured people in central and north Houston	2010	300,000	150,000
	2012	300,000	0
<b>HARRIS COUNTY HEALTHCARE ALLIANCE</b> HOUSTON, TX Toward creating and sustaining a comprehensive, coordinated system that meets the needs of uninsured and underserved people through an alliance of public and private health care providers	2009	6,000,000	2,000,000
<b>HEALTHCARE FOR THE HOMELESS-HOUSTON</b> HOUSTON, TX Toward primary health care, behavioral health counseling and intensive case management for homeless individuals	2012	600,000	250,000
<b>HOUSTON COMMUNITY HEALTH CENTERS INC.</b> HOUSTON, TX Toward primary health care services for low-income and underinsured people at Vecino Health Centers	2012	300,000	0
<b>HOUSTON DEPARTMENT OF HEALTH AND HUMAN SERVICES FOUNDATION INC.</b> HOUSTON, TX Toward expanding a coordinated vision services program that includes free eye exams and prescription glasses for schoolchildren	2012	1,500,000	0
<b>HOUSTON EYE ASSOCIATES FOUNDATION</b> HOUSTON, TX Toward eye care services and surgery for low-income patients	2011	35,000	10,000

GRANTEE & PURPOSE	YEAR APPROVED	TOTAL GRANT	2012 ALLOCATION
<b>HOUSTON HOSPICE</b> HOUSTON, TX Toward end-of-life care for terminally ill patients	2011	120,000	60,000
<b>KRIST SAMARITAN CENTER FOR COUNSELING AND EDUCATION</b> HOUSTON, TX Toward assessment and treatment services for children and teens with autism spectrum disorders and other social and communication disorders	2012	40,000	40,000
<b>LEGACY COMMUNITY HEALTH SERVICES INC.</b> HOUSTON, TX Toward adding dental, optometry, pediatric and behavioral care to the primary health care services provided at the Legacy on Lyons Avenue Health Center in the Fifth Ward	2012	300,000	300,000
<b>LONE STAR ASSOCIATION OF CHARITABLE CLINICS INC.</b> AUSTIN, TX Toward improving operational efficiencies and patient outcomes by developing a standard system to report data that measures the impact and contributions of charity clinics in greater Houston and Texas	2012	20,000	15,000
<b>MONTGOMERY COUNTY UNITED WAY INC.</b> THE WOODLANDS, TX Toward an electronic information exchange to facilitate access to health care in Montgomery County	2010	500,000	160,000
<b>MONTROSE COUNSELING CENTER, INC.</b> HOUSTON, TX Toward counseling and prevention services for gay, lesbian, bisexual and transgender individuals and their families	2012	180,000	60,000
<b>NETWORK OF BEHAVIORAL HEALTH PROVIDERS INC.</b> HOUSTON, TX Toward increasing the number of students entering clinical behavioral health fields	2010	100,000	50,000
<b>PLANNED PARENTHOOD GULF COAST INC.</b> HOUSTON, TX Toward building capacity to accommodate increased demand for affordable family planning and reproductive health care services <i>(Another portion of this grant is in Human Services under Basic Needs.)</i>	2012	500,000	0
<b>PRAIRIE VIEW A&amp;M UNIVERSITY</b> PRAIRIE VIEW, TX Toward establishing a doctoral nursing program, and toward a research center to study and develop virtual simulation technology for use in classrooms, hospitals and laboratories	2009	3,000,000	1,000,000
<b>SAN JOSE CLINIC A TEXAS NON-PROFIT CORPORATION</b> HOUSTON, TX Toward primary health care services for low-income and uninsured people in central Houston  Toward primary health care services for low-income and uninsured people in central Houston	2010	200,000	100,000
	2012	300,000	0
<b>SOUTH CENTRAL HOUSTON ACTION COUNCIL INC.</b> HOUSTON, TX Toward expanding access to services by renovating a Federally Qualified Health Center that provides preventive and primary medical, dental and behavioral health care for low-income and underserved families	2011	500,000	150,000
<b>SOUTH COUNTY COMMUNITY CLINIC</b> OAK RIDGE NORTH, TX Toward primary medical, dental and mental health care for low-income, uninsured people in Montgomery County and north Harris County	2011	150,000	75,000

GRANTEE & PURPOSE	YEAR APPROVED	TOTAL GRANT	2012 ALLOCATION
<b>TEXAS ONE VOICE A COLLABORATIVE FOR HEALTH &amp; HUMAN SERVICES</b> HOUSTON, TX Toward the Behavioral Health Public Policy Initiative to improve services through a systemic approach that emphasizes collaboration among treatment providers, advocates, consumers, family members, law enforcement agencies and other stakeholders	2012	300,000	150,000
<b>TOMAGWA MINISTRIES INC.</b> TOMBALL, TX Toward health care services for low-income and uninsured people in Harris, Waller and Montgomery Counties	2012	250,000	125,000
<b>TOTAL—PRIMARY CARE</b>			\$ 5,685,000
<p>Other</p>			
<b>METHODIST HOSPITAL FOUNDATION</b> HOUSTON, TX Toward improving patient safety and quality of care by providing continuing medical education to surgeons, allied health professionals and nurses	2011	\$ 1,230,000	\$ 615,000
<b>TEXAS HEART INSTITUTE</b> HOUSTON, TX Toward hiring research scientists to continue and accelerate adult stem cell research and treatment	2010	4,000,000	2,000,000
<b>TOTAL—OTHER</b>			\$ 2,615,000
<b>TOTAL—HEALTH</b>			\$ 11,155,000





# HUMAN SERVICES

# 75

Leading people  
toward independent  
and fulfilling lives  
for **75** years



JESSE JONES grew up in an affluent household in rural Tennessee, but poverty surrounded him. He saw his friends and neighbors suffer from deprivation and how his father's generosity sustained them. During the Great Depression, unemployment hit 25 percent, and many people were homeless, starving and desperate. As chairman of the federal government's Reconstruction Finance Corporation, Mr. Jones initiated and managed many programs that helped millions of citizens avoid calamity and saved thousands of homes, farms, banks and businesses. In 1936, he said in a speech, "Let's not forget that the lives of human beings are involved, and none must be allowed to suffer for want of food, clothing or shelter. No one is willing to allow this."

**United Way of Greater Houston**, a grant recipient since 1939, touches nearly one out of every two Houstonians. United Way helps develop children and youth to their full potential, strengthen families and neighborhoods, sustain senior independence and support those who are rebuilding their lives. Since 1990, United Way has received \$400,000 annually from the foundation, which provided an additional \$3 million toward new headquarters in 2001, furthering efforts to help local nonprofit agencies strengthen their organizations and expand services.

The **Young Men's Christian Association of the Greater Houston Area** has received Houston Endowment support since 1940. Recently, Houston Endowment donated \$3 million to help build a center in Houston's Third Ward, which will potentially engage 43,000 area residents through programs designed to improve their lives and their community.



A grant recipient since 1940, the **American Red Cross, Greater Houston Area Chapter**, provides relief to victims of disasters and helps people prevent, prepare for and respond to emergencies. In 1987, Houston Endowment donated \$3 million toward new headquarters to help improve services for more than 6 million people in a 14-county area. A recent grant will help the Red Cross engage and retain volunteers who assist others in their time of need.



Houston Endowment supports organizations that help vulnerable citizens obtain basic needs so they can build a better life.



**DePelchin Children's Center** received its first Houston Endowment grant in 1938, one year after the foundation was established, and has received support ever since to provide a continuum of services that protect children and strengthen families, including counseling, abuse prevention, foster care and adoption services.

**Buckner Children and Family Services** received a grant in October 1937, one month after Houston Endowment was established, and today operates in 15 Texas cities. In 2012, the foundation supported Buckner's new transitional housing program in Houston to help at-risk, single-parent families become self-sufficient.



Children's well-being has always been a Houston Endowment priority.



The **Girl Scouts of San Jacinto Council**, a grant recipient since 1945, helps more than 66,000 girls in 26 southeast Texas counties build confidence and character. In response to changing times, the foundation recently donated \$200,000 to help implement a Web-based communications system so its far-flung members can stay connected and have access in multiple languages to the resources and information they need to discover their talents and abilities.

In 1991, Houston Endowment began helping **Communities In Schools of Houston** keep kids in school. The campus-based program provides services and resources to underserved children with unmet needs, particularly in the Alief ISD, where more than 80 languages are spoken and the majority of the children are economically disadvantaged.





With more than \$6 million in assistance from Houston Endowment, **The Education Foundation of Harris County** operates the **Cooperative for After-School Enrichment** to mobilize community resources so that children have access to a safe, stimulating place to go after school, when crime rates for kids, whether they're victims or perpetrators, are highest.



**ChildBuilders** promotes healthy decision-making that prevents risky behavior and abuse and helps children become stronger parents in the future. Houston Endowment's recent grant will help ChildBuilders evaluate and enhance its programs.



Houston Endowment has helped the **Harris County Domestic Violence Coordinating Council** establish collaborations and agreements among area domestic violence service providers and law enforcement agencies to reduce barriers to assistance, provide seamless delivery of services and proactively prevent future incidents of domestic violence. The coordinated plan will be the first of its scale in the country.

Houston Endowment funded a study at **Texas Woman's University** that looks at two actions, either filing a civil protection order or staying in a shelter, to determine which provides the best outcomes for victims of domestic violence and their children. The first of its kind in the nation, the study may inform the system of care around domestic violence and how funders support intervention.



Houston Endowment funds programs and studies to improve the delivery of essential and vital services.



The **Houston Food Bank**—the largest food bank in the nation—impacts hunger regionally by supplying 500 nonprofit agencies in an 18-county area with food for the hungry, ultimately feeding 137,000 people each week. In 2007, the foundation donated \$5 million toward a new facility to improve and increase the distribution of food, and followed with \$3 million in 2011 to purchase equipment for the new facility and Food Bank partners to accommodate the increased supply and delivery of perishable, fresh and nutritious food.



Houston Endowment supports many organizations that help homeless people build self-sufficient lives, including the **United States Veterans Initiative** and **The Furniture Bank**, which makes sure those who transition into homes of their own don't arrive at an empty house. The **Coalition for the Homeless**, a grant recipient since 1993, leads 200 organizations in the development of coordinated community-wide strategies that prevent and end homelessness.

Houston Endowment encourages collaborative and comprehensive region-wide responses to issues.

With assistance from a \$450,000 grant in 2012, the **Houston Center for Literacy**, formerly the Houston Read Commission, helps 125 area literacy providers increase their capacity and improve their programs so they can further the development of a literate and prepared workforce.



Between 2004 and 2010, Houston Endowment donated \$1.78 million to the **Greater Houston Community Foundation** to establish the **Alliance of Community Assistance Ministries**, now an independent organization that strengthens the ability of community assistance ministries to provide basic needs, prevent homelessness and move people toward productive and self-sufficient lives.





At 60 locations throughout greater Houston, **Neighborhood Centers** helps more than 370,000 people in a 13-county area realize their dreams of a better life. Between 2005 and 2007, Houston Endowment donated \$4 million toward the Baker-Ripley Neighborhood Center in Gulfton—the most densely populated area in Harris County, where 41 percent of the households earn \$25,000 or less. Since the Center opened in 2010, more than half of the area’s residents have come there to discover and use their strengths to improve their education, finances and health, and ultimately their community. Recent Houston Endowment donations have helped Neighborhood Tax Centers provide free tax preparation to low-income earners. In partnership with the **United Way of Greater Houston**, the Tax Centers prepared almost 30,000 returns in 2012 and helped put tax refunds of \$41 million into the hands of many of Houston’s hardworking families.



# HUMAN SERVICES

111

HUMAN SERVICES

Basic Needs	\$ 5,860,000
Vulnerable Populations	2,502,000
Safe Families	2,416,000
Children & Youth	5,188,700
Economic Development	3,091,000
Strong Communities	3,345,321
Other	950,000
<b>Total</b>	<b>\$ 23,353,021</b>



GRANTEE & PURPOSE	YEAR APPROVED	TOTAL GRANT	2012 ALLOCATION
<b>Basic Needs</b>			
<b>3 A BEREAVEMENT FOUNDATION</b> HOUSTON, TX Toward assisting low-income and indigent families with support services, grief counseling and burials	2011	\$ 40,000	\$ 20,000
<b>ALLIANCE OF COMMUNITY ASSISTANCE MINISTRIES INC.</b> HOUSTON, TX Toward helping 12 assistance ministries increase their capacity to serve those in need	2012	300,000	150,000
<b>AMERICAN RED CROSS, GREATER HOUSTON AREA CHAPTER</b> HOUSTON, TX Toward recruiting and retaining volunteers to help those affected by a disaster	2012	225,000	150,000
<b>ASSISTANCE LEAGUE OF MONTGOMERY COUNTY</b> CONROE, TX Toward a larger thrift store building to support social service programs	2012	100,000	100,000
<b>BOAT PEOPLE SOS INC.</b> HOUSTON, TX Toward becoming an independent chapter of a national organization that provides social services for Vietnamese individuals and families	2011	185,000	85,000
<b>BRIDGES TO LIFE</b> HOUSTON, TX Toward reducing the recidivism of released inmates and facilitating the healing of victims and the rehabilitation of perpetrators  Toward reducing the recidivism of released inmates and facilitating the healing of victims and the rehabilitation of perpetrators	2010	60,000	30,000
	2012	60,000	0
<b>CATHEDRAL HEALTH MINISTRIES</b> HOUSTON, TX Toward helping homeless people become self-sufficient through a day shelter that provides hot meals, showers, laundry services and case management	2011	200,000	100,000
<b>CATHOLIC CHARITIES OF THE ARCHDIOCESE OF GALVESTON-HOUSTON</b> HOUSTON, TX Toward support services that help children and adults in need achieve self-sufficiency	2012	200,000	100,000
<b>CHINESE COMMUNITY CENTER INC.</b> HOUSTON, TX Toward culturally and linguistically appropriate social services for Asian-Americans, and toward programs that promote cultural understanding	2012	120,000	0
<b>COVENANT HOUSE TEXAS</b> HOUSTON, TX Toward emergency support and transitional housing for homeless and runaway youth	2012	200,000	100,000
<b>CRISIS INTERVENTION OF HOUSTON INCORPORATED</b> HOUSTON, TX Toward 24-hour telephone and Internet crisis counseling and referral services	2011	160,000	80,000
<b>EAST FT. BEND HUMAN NEEDS MINISTRY INC.</b> STAFFORD, TX Toward providing food, case management and emergency financial assistance for families in need	2012	50,000	25,000
<b>EPIPHANY COMMUNITY HEALTH OUTREACH SERVICES</b> HOUSTON, TX Toward helping underserved and uninsured people access free or low-cost health and social services in southwest Houston	2012	50,000	25,000
<b>FAMILY PROMISE OF LAKE HOUSTON</b> HUMBLE, TX Toward helping homeless families achieve independence through case management and collaborations with local congregations, volunteers and social service agencies	2012	40,000	20,000

GRANTEE & PURPOSE	YEAR APPROVED	TOTAL GRANT	2012 ALLOCATION
<b>FAMILY PROMISE OF MONTGOMERY COUNTY INC.</b> CONROE, TX Toward comprehensive social services to help families in Montgomery County transition from homelessness to independence	2011	50,000	25,000
<b>THE FURNITURE BANK</b> HOUSTON, TX Toward a program director to strengthen and expand services, increase visibility in the community and serve more families	2011	70,000	35,000
Toward providing furniture for people in need	2011	100,000	50,000
<b>GLEANINGS FROM THE HARVEST FOR GALVESTON</b> TEXAS CITY, TX Toward building capacity for the organization's expansion and affiliation with the Houston Food Bank	2012	178,600	120,000
<b>HOUSTON COMPASS INC.</b> HOUSTON, TX Toward services that help homeless clients become employed and independent	2010	50,000	25,000
Toward services that help homeless clients become employed and independent	2012	50,000	0
<b>HOUSTON GALVESTON INSTITUTE INC.</b> HOUSTON, TX Toward a development office to support counseling services for at-risk children, youth and families, and training, outreach and research programs	2012	110,000	60,000
<b>HOUSTON VOLUNTEER LAWYERS PROGRAM, INC.</b> HOUSTON, TX Toward free civil legal services for working poor and indigent people	2012	100,000	50,000
<b>HUMBLE AREA ASSISTANCE MINISTRIES</b> HUMBLE, TX Toward assistance and social services for families and individuals in need in Humble and east Montgomery County	2011	120,000	60,000
<b>JEWISH FAMILY SERVICE</b> HOUSTON, TX Toward counseling programs and recruiting and training volunteers to provide agency services	2011	80,000	40,000
<b>JULIA C. HESTER HOUSE INC.</b> HOUSTON, TX Toward social services to improve life for children, seniors and low-income families	2012	80,000	40,000
<b>KATY ARTREACH</b> KATY, TX Toward specialized art programs and social services for at-risk children, children and adults with special needs and the elderly	2012	40,000	20,000
<b>LOCAL INFANT FORMULA FOR EMERGENCIES INC.</b> HOUSTON, TX Toward formula, food and basic essentials for infants, and information about nutrition and parenting skills for parents	2011	50,000	25,000
<b>MAGNIFICAT HOUSE</b> HOUSTON, TX Toward landscaping, security, equipment and furnishings for a multi-purpose center that serves the homeless	2012	150,000	150,000
<b>MAIN STREET MINISTRIES HOUSTON</b> HOUSTON, TX Toward developing strategic plans to ensure the long-term success of programs that serve the homeless, near homeless and at-risk children	2012	30,000	30,000

GRANTEE & PURPOSE	YEAR APPROVED	TOTAL GRANT	2012 ALLOCATION
<b>MEMORIAL ASSISTANCE MINISTRIES INC.</b> HOUSTON, TX Toward emergency assistance for families in need and services that move them to self-sufficiency	2011	100,000	50,000
Toward expanding facilities to enhance and increase services that move at-risk families to self-sufficiency	2011	400,000	400,000
<b>MISSIONS OF YAHWEH INC.</b> HOUSTON, TX Toward renovating a shelter that helps homeless women and children achieve independent and self-sufficient lives	2012	75,000	75,000
Toward programs that help homeless women and children achieve independent and self-sufficient lives and that serve at-risk residents of the Carverdale community	2012	135,000	45,000
<b>MY BROTHER'S KEEPER OUTREACH CENTER</b> HOUSTON, TX Toward assistance and social services for families and individuals in need in Alief	2012	50,000	25,000
<b>NEHEMIAH CENTER INC.</b> HOUSTON, TX Toward adult literacy classes and family improvement programs to help at-risk children have a better life	2011	70,000	35,000
<b>NORTHWEST ASSISTANCE MINISTRIES</b> HOUSTON, TX Toward providing basic needs for low-income people in northwest Harris County	2011	400,000	200,000
<b>THE ONESTAR FOUNDATION</b> AUSTIN, TX Toward strengthening the capacities of social service organizations by identifying needs and resources through an online, interactive map	2012	500,000	250,000
<b>OPEN DOOR MISSION FOUNDATION</b> HOUSTON, TX Toward drug and alcohol abuse recovery programs for homeless and near-homeless men, GED preparation classes, and food, clothing and shelter during convalescence from surgery, injury or illness	2011	160,000	80,000
<b>PALMER DRUG ABUSE PROGRAM-HOUSTON INC.</b> HOUSTON, TX Toward substance abuse recovery and prevention programs for adolescents and their families	2011	70,000	35,000
<b>PALMER MEMORIAL EPISCOPAL CHURCH</b> HOUSTON, TX Toward the Way Station, a program that provides hot breakfasts and social and medical support services to homeless and indigent people	2012	60,000	30,000
<b>PLANNED PARENTHOOD GULF COAST INC.</b> HOUSTON, TX Toward building capacity to accommodate increased demand for affordable family planning and reproductive health care services <i>(Another portion of this grant is in Health under Primary Care.)</i>	2012	1,500,000	1,000,000
<b>PROGRESSIVE FORUM</b> BELLAIRE, TX Toward a speakers series featuring presentations by leading figures from the arts, sciences, humanities, politics and public affairs	2010	30,000	15,000
<b>SANTA MARIA HOSTEL INC.</b> HOUSTON, TX Toward transitional housing and support services for homeless women and their children	2012	60,000	60,000

GRANTEE & PURPOSE	YEAR APPROVED	TOTAL GRANT	2012 ALLOCATION
<b>SEARCH HOMELESS SERVICES</b> HOUSTON, TX Toward helping homeless people achieve self-sufficiency by placing SEARCH case managers in housing facilities operated by other organizations  Toward efforts to strengthen the organization's ability to serve the homeless, in honor of Larry R. Faulkner's service with Houston Endowment  Toward a continuum of services that help homeless people become self-sufficient	2011	300,000	150,000
	2012	150,000	150,000
	2012	300,000	150,000
<b>SHELTER PROVIDERS OF HOUSTON INC.</b> HOUSTON, TX Toward transitional housing for temporarily homeless families and individuals	2010	50,000	25,000
Toward construction management, labor and materials provided by the Greater Houston Builders Association to build or renovate shelters and facilities for homeless service providers	2012	50,000	0
<b>SOUTHEAST AREA MINISTRIES</b> SOUTH HOUSTON, TX Toward emergency assistance for people in crisis in southeast Harris County	2011	80,000	40,000
<b>ST. VINCENT'S HOUSE</b> GALVESTON, TX Toward social services for indigent people in Galveston County, and toward a case manager to help stabilize their lives	2011	160,000	70,000
<b>STAR OF HOPE MISSION</b> HOUSTON, TX Toward emergency, transitional and long-term services for homeless men, women and their children	2012	300,000	100,000
<b>TAMINA COMMUNITY CENTER</b> CONROE, TX Toward social services for low-income people in an unincorporated community in Montgomery County	2012	30,000	0
<b>TARGET HUNGER</b> HOUSTON, TX Toward expanding services that provide food to the hungry	2010	230,000	115,000
Toward services that provide food to the hungry	2012	180,000	0
<b>TEXAS HEALTH INSTITUTE</b> AUSTIN, TX Toward the Houston launch of the Benefit Bank of Texas, an online system that connects low- to moderate-income people with assistance programs	2012	550,000	350,000
<b>UNITED STATES VETERANS INITIATIVE</b> HOUSTON, TX Toward reintegrating homeless veterans in Houston by providing housing, outpatient treatment, case management and other social services	2012	200,000	0
<b>UNITED WAY OF GREATER HOUSTON</b> HOUSTON, TX Toward supporting health and human services agencies and programs that serve children, youth, families, seniors and individuals	2012	1,200,000	400,000
<b>WALLER ASSISTANCE &amp; RESTORATION MINISTRIES INC.</b> WALLER, TX Toward a new facility to improve and expand emergency assistance services to people in crisis in northwest Harris County and northeast Waller County	2011	100,000	100,000
<b>WESLEY COMMUNITY CENTER, INC.</b> HOUSTON, TX Toward a multi-purpose social service agency that serves low- and moderate-income people in near north Houston	2012	150,000	75,000

<b>GRANTEE &amp; PURPOSE</b>	<b>YEAR APPROVED</b>	<b>TOTAL GRANT</b>	<b>2012 ALLOCATION</b>
<b>WEST HOUSTON ASSISTANCE MINISTRIES INC.</b> HOUSTON, TX Toward emergency assistance programs and social services for low-income people in west Houston	2012	120,000	60,000
<b>WESTSIDE HOMELESS PARTNERSHIP</b> HOUSTON, TX Toward transitional housing programs that empower at-risk families to achieve self-sufficiency and a stable, secure home environment	2011	80,000	40,000
<b>THE WOMEN'S HOME</b> HOUSTON, TX Toward long-term rehabilitation programs at a transitional residential center for women who are chronically homeless	2012	40,000	20,000
<b>TOTAL—BASIC NEEDS</b>			\$ 5,860,000

117

### Vulnerable Populations

<b>THE ARC OF GREATER HOUSTON</b> HOUSTON, TX Toward advocating for and assisting individuals with intellectual and developmental disabilities, and toward providing support services for their families, particularly those involved with the public school special education system and those securing these services in underserved communities	2012	\$ 300,000	\$ 100,000
<b>BAY AREA REHABILITATION CENTER</b> BAYTOWN, TX Toward renovating an indoor junior Olympic-size warm water therapeutic pool	2012	200,000	150,000
<b>BEST BUDDIES INTERNATIONAL INC.</b> HOUSTON, TX Toward a program supervisor to expand a program that helps high school students with intellectual and developmental disabilities cultivate friendships and social skills by pairing them with non-disabled peers	2011	30,000	30,000
<b>BRAZOS BEND GUARDIANSHIP SERVICES</b> STAFFORD, TX Toward protecting incapacitated and disabled adults and their families in Fort Bend County from abuse, neglect and exploitation through bimonthly group support meetings facilitated by attorneys who focus on issues relating to guardianship and alternative guardianship services	2012	25,000	25,000
<b>CAMP FOR ALL FOUNDATION</b> HOUSTON, TX Toward building staff housing and a multi-purpose center and renovating facilities at a barrier-free camp that provides accessible recreational and camping opportunities for children and adults with challenging illnesses and special needs	2012	800,000	800,000
<b>CAREER AND RECOVERY RESOURCES INC.</b> HOUSTON, TX Toward computer training, literacy classes and job placement programs for deaf and hard-of-hearing people	2011	120,000	60,000
<b>DIONYSUS THEATRE</b> HOUSTON, TX Toward removing barriers to understanding and stereotypes about people with disabilities through theatrical productions by a performing arts troupe composed of disabled and able-bodied performers	2012	25,000	25,000

HUMAN SERVICES

GRANTEE & PURPOSE	YEAR APPROVED	TOTAL GRANT	2012 ALLOCATION
<b>FAMILY TO FAMILY NETWORK</b> HOUSTON, TX Toward providing information, training and referrals to families with children who have disabilities	2012	30,000	20,000
<b>FORT BEND SENIOR CITIZENS MEALS ON WHEELS &amp; MUCH MUCH MORE INC.</b> ROSENBERG, TX Toward hot meals and other social services for seniors	2011	120,000	60,000
<b>FOUNDATION FOR THE RETARDED</b> HOUSTON, TX Toward residential care, daycare and vocational training for people with intellectual or developmental disabilities	2012	120,000	60,000
<b>GOODWILL INDUSTRIES OF HOUSTON</b> HOUSTON, TX Toward purchasing a new headquarters building to accommodate expanded services and to provide a more centralized location to serve more Houstonians	2012	500,000	500,000
<b>HOUSTON AREA PARKINSON SOCIETY</b> HOUSTON, TX Toward support services to improve the quality of life for people with Parkinson's disease and related movement disorders	2011	15,000	5,000
<b>INTERFAITH CAREPARTNERS, INC.</b> HOUSTON, TX Toward volunteer services that help frail and elderly people stay independent and at home and that support their caregivers, and toward salary support during the organization's leadership transition	2011	175,000	100,000
<b>INTERFAITH MINISTRIES FOR GREATER HOUSTON</b> HOUSTON, TX Toward delivering hot, nutritious meals to homebound seniors through the Meals on Wheels program, and toward software to improve delivery cost and efficiency	2012	267,000	137,000
<b>MDRC</b> NEW YORK, NY Toward a program to increase community engagement and employment for veterans in Houston with disabilities	2012	150,000	75,000
<b>NAMI GULF COAST</b> ALVIN, TX Toward educational outreach, referrals, support services and advocacy for people directly and indirectly affected by mental illness	2011	50,000	25,000
<b>PRECINCT2GETHER INC.</b> HOUSTON, TX Toward meals for seniors served at community centers, churches and individual homes	2012	25,000	25,000
<b>RIVER PERFORMING AND VISUAL ARTS CENTER</b> HOUSTON, TX Toward enhancing the confidence, social skills and quality of life of children with special needs through barrier-free classes in music, art, drama and dance	2011	50,000	25,000
<b>VILLAGE LEARNING CENTER INC.</b> KINGWOOD, TX Toward acquiring a building to expand after-school programs for children with intellectual and developmental disabilities in northeast Harris County and southeast Montgomery County	2011	200,000	200,000
<b>VITA LIVING INC.</b> HOUSTON, TX Toward a manager to recruit, train, place and retain volunteers to help provide long-term comprehensive care and support services for adults and children with intellectual and developmental disabilities	2012	80,000	50,000

<b>GRANTEE &amp; PURPOSE</b>	<b>YEAR APPROVED</b>	<b>TOTAL GRANT</b>	<b>2012 ALLOCATION</b>
<b>VOLUNTEER INTERFAITH CAREGIVERS SOUTHWEST</b> BELLAIRE, TX Toward transportation and other support services for frail, elderly and health-impaired people in southwest Houston	2010	20,000	10,000
Toward transportation and other support services for frail, elderly and health-impaired people in southwest Houston	2012	30,000	0
<b>W. LEO DANIELS TOWERS, INC.</b> HOUSTON, TX Toward helping senior and disabled residents maintain independent lives by providing hot meals and housekeeping services	2012	35,000	20,000
<b>TOTAL—VULNERABLE POPULATIONS</b>			<b>\$ 2,502,000</b>

## Safe Families

<b>BRIDGE OVER TROUBLED WATERS INC.</b> PASADENA, TX Toward services and shelter to help survivors of domestic violence progress from crisis to self-sufficiency	2012	\$ 100,000	\$ 50,000
Toward the Harris County Domestic Violence Coordinating Council's systematic efforts to establish collaborations that increase the safety of domestic violence victims, hold perpetrators accountable and maximize resources to prevent and end domestic violence	2012	100,000	100,000
<b>BUCKNER CHILDREN AND FAMILY SERVICES INC.</b> DALLAS, TX Toward Family Place Houston, a transitional housing program that helps at-risk single-parent families become self-sufficient	2012	225,000	100,000
<b>CASA DE ESPERANZA DE LOS NINOS INCORPORATED</b> HOUSTON, TX Toward residential care for neglected or abused children and for children with HIV/AIDS	2011	150,000	75,000
<b>CHILD ADVOCATES INCORPORATED</b> HOUSTON, TX Toward a pilot program to help older children successfully transition from foster care into a permanent home	2011	66,000	26,000
Toward recruiting, training and supervising volunteers who serve as court-appointed advocates for abused and neglected children	2011	300,000	100,000
<b>CHILDBUILDERS</b> HOUSTON, TX Toward programs that help children and adolescents avoid and address abuse, create and sustain healthy relationships and become good parents in the future	2011	200,000	100,000
Toward a longitudinal evaluation to assess the success of programs that help children and adolescents avoid and address abuse, create and sustain healthy relationships and become good parents in the future; toward updating curricula; and toward hiring a development director to increase and diversify funding	2011	565,000	190,000
<b>CHILDREN AT RISK INC.</b> HOUSTON, TX Toward a collaboration among stakeholders to determine the feasibility of implementing the Positive Parenting Program, an evidence-based child abuse prevention program	2011	100,000	50,000
Toward reducing child abuse by developing infrastructure and partnerships with local organizations to implement an evidence-based child abuse prevention program	2012	300,000	200,000

GRANTEE & PURPOSE	YEAR APPROVED	TOTAL GRANT	2012 ALLOCATION
<b>DAYA INC.</b> HOUSTON, TX Toward direct services and resource referrals for South Asian women who are victims of domestic abuse and sexual assault	2012	100,000	50,000
Toward acquiring a transitional home for South Asian women who are victims of domestic abuse and sexual assault	2012	100,000	100,000
<b>DEPELCHIN CHILDREN'S CENTER</b> HOUSTON, TX Toward counseling, abuse and neglect prevention programs, and foster care and adoption services to protect children and strengthen families	2011	200,000	100,000
<b>FORT BEND COUNTY WOMEN'S CENTER, INC.</b> RICHMOND, TX Toward helping survivors of domestic violence and sexual assault achieve safety and self-sufficiency	2012	150,000	50,000
Toward building a new Resale Center that will generate income to support programs that help survivors of domestic violence and sexual assault achieve safety and self-sufficiency	2012	250,000	0
<b>HOUSTON AREA WOMEN'S CENTER INC.</b> HOUSTON, TX Toward residential and nonresidential programs to help survivors of domestic violence and sexual assault create and implement plans for stability and independence, and toward community awareness and educational programs	2010	200,000	100,000
Toward residential and nonresidential programs to help survivors of domestic violence and sexual assault create and implement plans for stability and independence, and toward community awareness and educational programs	2012	200,000	0
<b>INNOVATIVE ALTERNATIVES INC.</b> HOUSTON, TX Toward planning future facility changes to accommodate the increased need for mediation and counseling services for families, children and individuals	2012	15,000	0
<b>KIND INC.</b> WASHINGTON, DC Toward recruiting and training attorneys to provide pro-bono legal services to unaccompanied immigrant and refugee children facing immigration proceedings	2012	35,000	35,000
Toward providing clothes, hygiene items and other basic necessities to children under the care of Children's Protective Services	2012	150,000	50,000
<b>RESOURCE AND CRISIS CENTER OF GALVESTON COUNTY</b> GALVESTON, TX Toward a continuum of services that promote the safety and well-being of victims of family violence, sexual assault and child abuse	2012	100,000	50,000
<b>SPAULDING FOR CHILDREN</b> HOUSTON, TX Toward foster care, adoption and post-adoption services for children and families	2011	130,000	65,000
<b>TAHIRI JUSTICE CENTER</b> HOUSTON, TX Toward pro-bono legal services and protection for refugee and immigrant women and girls in Houston who have fled domestic violence and persecution	2012	150,000	75,000
<b>TEXAS COUNCIL ON FAMILY VIOLENCE INCORPORATED</b> AUSTIN, TX Toward supporting domestic violence programs and organizations, maintaining and enhancing the quality of their services and advocating on behalf of family violence programs and survivors	2012	200,000	100,000

<b>GRANTEE &amp; PURPOSE</b>	<b>YEAR APPROVED</b>	<b>TOTAL GRANT</b>	<b>2012 ALLOCATION</b>
<b>TEXAS WOMAN'S UNIVERSITY</b> DENTON, TX Toward investigating the results of two actions, either filing a civil protective order or staying in a shelter, to determine the long-term outcomes for victims of domestic abuse and their children	2010	900,000	300,000
Toward continuing a study on the effectiveness of two actions, either filing a civil protective order or staying in a shelter, to determine the long-term outcomes for victims of domestic violence and their children	2012	1,750,000	350,000
<b>TOTAL—SAFE FAMILIES</b>			<b>\$ 2,416,000</b>

## Children & Youth

<b>ANTI-DEFAMATION LEAGUE</b> HOUSTON, TX Toward providing tools to educators and parents to address issues of bias and prejudice in children	2012	\$ 25,000	\$ 25,000
<b>AVANCE INC.</b> HOUSTON, TX Toward a program that strengthens low-income families, enhances parenting skills and encourages children's development and their educational success	2012	50,000	50,000
<b>BIG BROTHERS BIG SISTERS LONE STAR</b> HOUSTON, TX Toward one-on-one mentoring programs and enrichment activities that help at-risk children increase self-esteem, achieve goals, improve behavior and succeed academically	2012	250,000	150,000
<b>BUCKNER CHILDREN AND FAMILY SERVICES INC.</b> DALLAS, TX Toward general operating support for the Aldine Community Transformation Center	2012	40,000	40,000
<b>CHANGE HAPPENS</b> HOUSTON, TX Toward the successful and safe reintegration of juvenile offenders into the community through weekly mentoring sessions that occur before and after their release from correctional facilities	2012	107,700	67,700
<b>CHILDREN'S CENTER FOR SELF-ESTEEM INC.</b> HOUSTON, TX Toward expanding programs in elementary schools and social service agencies that teach parents, teachers and other adult caregivers how to create and sustain nurturing environments that promote self-esteem in children	2011	160,000	80,000
<b>CHILDREN'S PRISON ARTS PROJECT</b> HOUSTON, TX Toward a theater and visual arts program that encourages constructive self-expression and positive self-images in incarcerated, adjudicated and abused youth	2011	30,000	15,000
<b>COLLABORATIVE FOR CHILDREN</b> HOUSTON, TX Toward helping children succeed in school and in life by building parents' knowledge and skills, improving the quality of early childhood education and care, and informing the community about the importance and impact of high quality early childhood education	2012	700,000	350,000
<b>COMMUNITIES IN SCHOOLS BAY AREA, INC.</b> HOUSTON, TX Toward programs that empower Clear Creek and Dickinson ISD students to stay in school and succeed in life	2010	100,000	50,000

GRANTEE & PURPOSE	YEAR APPROVED	TOTAL GRANT	2012 ALLOCATION
<b>COMMUNITIES IN SCHOOLS OF HOUSTON, INC.</b> HOUSTON, TX Toward coordinated social services to help at-risk Alief ISD students succeed in school	2012	260,000	0
<b>COMMUNITIES IN SCHOOLS-BAYTOWN INC.</b> BAYTOWN, TX Toward programs that empower students to stay in school and succeed in life	2012	50,000	50,000
<b>CROSSROADS COMMUNITY PARTNERSHIP FOR YOUTH INC.</b> HOUSTON, TX Toward reducing recidivism by matching youth in Harris County juvenile detention centers with volunteer adult mentors	2011	85,000	30,000
<b>EARL CARL INSTITUTE FOR LEGAL AND SOCIAL POLICY INC.</b> HOUSTON, TX Toward reducing the school-to-prison pipeline through the Juvenile Justice Project by providing direct representation to juvenile students in class C misdemeanor cases, training community organizations and attorneys, and participating in impact litigation and policy advocacy	2012	86,000	56,000
<b>THE EDUCATION FOUNDATION OF HARRIS COUNTY</b> HOUSTON, TX Toward increasing access to and improving after-school programs for children in Harris County through partnerships, resources, leadership and training	2011	2,000,000	1,000,000
<b>GENESYS WORKS</b> HOUSTON, TX Toward expanding a program that provides underserved Houston area high school students with training, certification and employment in technical services	2011	1,200,000	400,000
<b>GIRLS INCORPORATED OF GREATER HOUSTON</b> HOUSTON, TX Toward programs that help girls lead successful, independent and fulfilling lives	2011	100,000	50,000
<b>GULF COAST TRADES CENTER</b> NEW WAVERLY, TX Toward replacing the wastewater treatment system at a residential facility that provides support services and academic and vocational training for adjudicated youth	2012	175,000	175,000
<b>HOUSTON ACHIEVEMENT PLACE</b> HOUSTON, TX Toward teaching children social skills that prepare them to succeed in school and in life  Toward an intervention and training program that teaches children social skills that prepare them to succeed in school and in life	2010	100,000	50,000
	2012	100,000	0
<b>HOUSTON URBAN DEBATE LEAGUE</b> HOUSTON, TX Toward the Summer Institute, a workshop to prepare Houston ISD high school students to participate in debate programs	2012	25,000	25,000
<b>HUMAN RIGHTS CAMPAIGN FOUNDATION</b> WASHINGTON, DC Toward implementing a program in Houston elementary schools for school leaders, teachers, counselors and children that addresses family diversity, gender stereotyping and bullying	2011	125,000	75,000
<b>JUNIOR ACHIEVEMENT OF SOUTHEAST TEXAS INC.</b> HOUSTON, TX Toward hands-on learning experiences that teach school students financial literacy, job readiness and entrepreneurship	2011	130,000	50,000

GRANTEE & PURPOSE	YEAR APPROVED	TOTAL GRANT	2012 ALLOCATION
<b>KICK DRUGS OUT OF AMERICA FOUNDATION</b> HOUSTON, TX Toward KickStart Kids, a martial arts and development program for low-income, at-risk middle school students	2011	80,000	40,000
<b>KIDS HOPE USA INC.</b> FORT WORTH, TX Toward matching mentors from area congregations with at-risk students in Houston's public elementary schools	2012	100,000	50,000
<b>MAKING IT BETTER</b> HOUSTON, TX Toward intensive literacy instruction for at-risk students in area elementary schools	2012	25,000	25,000
<b>MONTGOMERY COUNTY YOUTH SERVICES INC.</b> CONROE, TX Toward crisis counseling, street outreach and shelter programs, and prevention services that strengthen families and help young people stay out of trouble and in school	2011	100,000	50,000
Toward purchasing and implementing new client, donor and financial tracking software to improve crisis counseling, street outreach and shelter programs, and prevention services that strengthen families and help young people become productive citizens	2012	80,000	0
<b>PLAYWORKS EDUCATION ENERGIZED</b> HOUSTON, TX Toward reducing bullying and increasing physical activity in Houston area schoolchildren by training teachers and staff to implement energized and safe recess periods, classroom play, after-school activities and peer leadership programs	2012	90,000	30,000
<b>PRO-VISION MINISTRIES INC.</b> HOUSTON, TX Toward establishing and managing an urban farm to provide students with life skills training	2010	200,000	100,000
<b>RESOLVE IT INC.</b> KEMAH, TX Toward intervention programs that provide at-risk teens with alternatives to violence, drug abuse, delinquent behavior and leaving school	2012	50,000	0
<b>THE UNIVERSITY OF TEXAS HEALTH SCIENCE CENTER AT HOUSTON</b> HOUSTON, TX Toward Reach Out and Read, a training program for health care providers to include literacy as a standard part of pediatric primary care, particularly for low-income families	2011	150,000	50,000
Toward reducing teen pregnancy by supplementing evidence-based health curriculums in middle schools with complementary community-wide strategies and interventions in areas with the highest teen birthrates <i>(Another portion of this grant is in Health under Prevention.)</i>	2012	3,000,000	2,000,000
<b>WORKSHOP HOUSTON</b> HOUSTON, TX Toward hands-on, skill-building experiences and academic enrichment and development programs for children and young adults in the Third Ward	2012	45,000	25,000
<b>YOUNG MEN'S CHRISTIAN ASSOCIATION OF GREATER HOUSTON AREA</b> HOUSTON, TX Toward providing opportunities for at-risk, inner-city youth to attend the Downtown YMCA day camp	2010	100,000	30,000
<b>TOTAL—CHILDREN &amp; YOUTH</b>			\$ 5,188,700

GRANTEE & PURPOSE	YEAR APPROVED	TOTAL GRANT	2012 ALLOCATION
<b>Economic Development</b>			
<b>ACCION TEXAS INC.</b> SAN ANTONIO, TX Toward loans and support services for small business owners in Houston who do not have access to traditional credit resources	2012	\$ 100,000	\$ 100,000
<b>ADULT READING CENTER, INC.</b> PEARLAND, TX Toward free literacy and citizenship classes for adults in the Pearland area	2011	150,000	50,000
<b>BETTER BUSINESS BUREAU OF METROPOLITAN HOUSTON EDUCATIONAL FOUNDATION</b> HOUSTON, TX Toward educating consumers, particularly young adults, seniors and low-income citizens, about unethical business practices and fraudulent schemes	2012	80,000	40,000
<b>CAPITAL INVESTING IN DEVELOPMENT AND EMPLOYMENT OF ADULTS INC.</b> AUSTIN, TX Toward helping low-income adults in Houston obtain living-wage jobs through social, educational and placement services	2012	150,000	0
<b>CENIKOR FOUNDATION INC.</b> HOUSTON, TX Toward services that help residents at the Deer Park facility obtain higher-paying jobs	2011	70,000	35,000
<b>COUNCIL FOR ADULT AND EXPERIENTIAL LEARNING</b> CHICAGO, IL Toward implementing in Houston the Web-based program LearningCounts.org, a tool that submits a portfolio of work and life experiences to the American Council on Education that may qualify an applicant for academic credit toward obtaining a degree	2011	450,000	225,000
<b>GALVESTON COUNTY ECONOMIC ALLIANCE FOUNDATION INC.</b> TEXAS CITY, TX Toward support services for entrepreneurs and small business owners through the Galveston County Small Business Development Center	2011	80,000	40,000
<b>HOUSTON CENTER FOR LITERACY</b> HOUSTON, TX Toward recruiting, leading and mobilizing a coalition of agencies, service providers and resources that promote and improve literacy in greater Houston  Toward a full-time advocate to lead and coordinate regional and statewide efforts to advance clear messages and awareness about the importance of adult literacy and education	2011	100,000	100,000
<b>LITERACY ADVANCE OF HOUSTON, INC.</b> HOUSTON, TX Toward services to help people learn to read, write and communicate effectively in English	2012	150,000	75,000
Toward developing infrastructure and funding sources to help more people learn to read, write and communicate effectively in English	2012	175,000	106,000
<b>LITERACY VOLUNTEERS OF FORT BEND COUNTY INC.</b> SUGAR LAND, TX Toward free literacy classes for adults in Fort Bend County	2011	150,000	50,000
<b>MEXICAN INSTITUTE OF GREATER HOUSTON, INC.</b> HOUSTON, TX Toward new content and the development of a new educational platform to expand a computer literacy training program for low-income, non-English-speaking adult Hispanics, particularly parents of school-age children	2011	300,000	300,000

GRANTEE & PURPOSE	YEAR APPROVED	TOTAL GRANT	2012 ALLOCATION
<b>NEIGHBORHOOD CENTERS INC.</b> HOUSTON, TX			
Toward services that facilitate access to citizenship for immigrants	2011	100,000	100,000
Toward free tax preparation services that help identify and claim tax credits created specifically to improve the economic well-being of low-income people	2011	650,000	650,000
Toward free tax preparation services that help identify and claim tax credits created specifically to improve the economic well-being of low-income people	2012	650,000	650,000
<b>NORTH PASADENA COMMUNITY OUTREACH ORGANIZATION INC.</b> PASADENA, TX			
Toward educational programs and social services for low-income families	2012	125,000	75,000
<b>PRISON ENTREPRENEURSHIP PROGRAM</b> HOUSTON, TX			
Toward reducing recidivism by teaching inmates business skills, matching them with a volunteer mentor and providing reintegration and employment services	2011	600,000	325,000
<b>WOMEN'S RESOURCE OF GREATER HOUSTON</b> HOUSTON, TX			
Toward classes that teach women, girls and families about banking, saving, budgeting, credit, investing, management and financial planning	2011	40,000	20,000
<b>TOTAL—ECONOMIC DEVELOPMENT</b>			\$ 3,091,000
<b>Strong Communities</b>			
<b>AIR ALLIANCE HOUSTON</b> HOUSTON, TX			
Toward developing Environmental Community Advocates of Galena Park to help residents enhance their quality of life	2011	\$ 220,000	\$ 85,321
<b>AVENUE COMMUNITY DEVELOPMENT CORPORATION</b> HOUSTON, TX			
Toward developing affordable, energy-efficient housing and encouraging economic development in the near north side and the East End	2011	225,000	75,000
Toward developing three affordable housing projects for seniors and families	2011	1,430,000	1,430,000
<b>CHAMBERS RECOVERY TEAM</b> ANAHUAC, TX			
Toward developing and implementing a long-term community recovery plan for Chambers County in response to damage from Hurricane Ike	2012	55,000	55,000
<b>HABITAT FOR HUMANITY INTERNATIONAL INC. NORTHWEST HARRIS COUNTY</b> HOUSTON, TX			
Toward expanding ReStore, a facility to manage surplus new and used building material for use in Habitat homes and for sale to the public	2012	60,000	60,000
<b>LOCAL INITIATIVES SUPPORT CORPORATION</b> HOUSTON, TX			
Toward a program to improve neighborhoods by training residents to identify problems, pursue solutions and achieve results	2011	700,000	350,000
<b>NEW HOPE HOUSING INC.</b> HOUSTON, TX			
Toward developing four single room occupancy apartment communities for very low-income individuals	2010	5,000,000	1,250,000
<b>REBUILDING TOGETHER HOUSTON</b> HOUSTON, TX			
Toward repairing, renovating and modifying the homes of low-income seniors and disabled people	2012	80,000	0

GRANTEE & PURPOSE	YEAR APPROVED	TOTAL GRANT	2012 ALLOCATION
<b>ROW HOUSE COMMUNITY DEVELOPMENT</b> HOUSTON, TX Toward affordable housing projects, economic development, neighborhood renewal and historic preservation for low- and moderate-income residents in the Third Ward	2011	80,000	40,000
<b>TEXANS TOGETHER EDUCATION FUND</b> HOUSTON, TX Toward helping families solve problems and avoid relocating by encouraging ties with their neighbors and their communities through the Apartments Are Communities program	2012	155,000	0
<b>TOTAL—STRONG COMMUNITIES</b>			\$ 3,345,321
<b>Other</b>			
<b>AMERICAN LEADERSHIP FORUM</b> HOUSTON, TX Toward strengthening leadership and developing solutions in the criminal justice system by providing scholarships for nonprofit and public sector participants to attend the Criminal Justice Fellows program	2011	\$ 50,000	\$ 25,000
<b>ASSOCIATION OF FUNDRAISING PROFESSIONALS— GREATER HOUSTON CHAPTER</b> BELLAIRE, TX Toward professional education programs to advance philanthropy	2012	15,000	5,000
<b>CENTER FOR HOUSTON'S FUTURE INC.</b> HOUSTON, TX Toward equipping, engaging and enabling residents, policymakers and leaders to create a sustainable and competitive future by providing accurate, unbiased facts about key conditions through the Community Indicator Program	2011	1,540,000	625,000
<b>EXECUTIVE SERVICE CORPS OF HOUSTON INC.</b> HOUSTON, TX Toward strengthening nonprofit organizations through free consulting services provided by retired business executives and management professionals	2012	30,000	15,000
<b>HOUSTON AREA URBAN LEAGUE INC.</b> HOUSTON, TX Toward a consultant to help the organization grow, and toward a grant writer to increase and diversify funding	2012	100,000	40,000
<b>LEADERSHIP HOUSTON INC.</b> HOUSTON, TX Toward scholarships for nonprofit and public sector professionals participating in programs that educate emerging leaders about issues affecting Houston	2012	20,000	20,000
<b>PROGRESSIVE FORUM</b> BELLAIRE, TX Toward expanding the Progressive Forum's Web site	2010	60,000	10,000
<b>TEXAS ONE VOICE A COLLABORATIVE FOR HEALTH &amp; HUMAN SERVICES</b> HOUSTON, TX Toward a partnership of public, private and nonprofit organizations that identifies needs and develops public policy initiatives to improve health and human service systems throughout the community	2011	50,000	25,000
<b>TEXAS SOUTHERN UNIVERSITY</b> HOUSTON, TX Toward undergraduate and graduate internships in the Texas Legislature and other state and municipal agencies	2011	150,000	50,000

GRANTEE & PURPOSE	YEAR APPROVED	TOTAL GRANT	2012 ALLOCATION
<b>UNIVERSITY OF HOUSTON</b> HOUSTON, TX Toward educating, preparing and certifying professionals to lead and strengthen nonprofit organizations through the David M. Underwood Chapter of the Nonprofit Leadership Alliance Certificate Program at the University's Graduate School of Social Work	2012	130,000	70,000
<b>US FOUNDATION FOR THE INSPIRATION &amp; RECOGNITION OF SCIENCE &amp; TECHNOLOGY</b> MANCHESTER, NH Toward encouraging interest and achievement in math, science and technology in students by supporting Houston area teams that design and build robots for competition	2011	70,000	40,000
<b>WONDERWORKS</b> HOUSTON, TX Toward a summer enrichment program that provides high school students with in-depth, college-style courses in arts, architecture, literature and media	2011	50,000	25,000
TOTAL—OTHER			\$ 950,000
TOTAL—HUMAN SERVICES			\$ 23,353,021



ATTACK ATTACK ATTACK

OFFICIAL BIRTH  
For Sale of  
WAR BONDS & STAMPS  
Checks accepted for Bonds  
—  
Increase your Payroll Deductions  
for the Purchase of  
WAR BONDS  
—  
5% or Increased subscriptions  
and lengthen service within  
90 DAYS  
—  
ALL SALES MUST  
CONFORM QUOTA

is Ready, Too

75

it be  
ut at  
of  
BON



# THE FOUNDERS

75

JESSE H. AND MARY GIBBS JONES

After donating more than \$1 million during their first years of marriage to help create and develop institutions and organizations that improved life for Houston's people and encouraged the city's growth, Jesse and Mary Gibbs Jones established Houston Endowment in 1937 to formalize and perpetuate their philanthropy. They both knew they would prosper only if their community thrived.



Dallas Texas 1894

Jan'y 1895 I was promoted to manager  
 Jesse H. Jones } #1 - Jesse H. Jones - Bookkeeper  
 #2 - C. B. Martin - Yard man  
 #3 - a teamster -

M.T. Jones Lumber Company, Dallas, Texas, 1894

130

THE FOUNDERS



Jesse Jones was born on April 5, 1874, just nine years after the end of the Civil War, and grew up on his family's prosperous tobacco farm in Robertson County, Tennessee. Although the Joneses would eventually live in one of the grandest homes outside of Nashville, poverty surrounded them. Jesse's father, William, always kept the farm's smokehouse doors open so their struggling neighbors could help themselves when food was scarce. Jesse's Aunt Nancy, who moved in with the Joneses after his mother died when he was six, always kept track of who took food so she could make sure they were eventually repaid. From their charitable but frugal example, young Jesse saw that a loan worked better than a handout and that most neighbors honored their obligations when given sufficient time. When able, they helped others. Jesse saw how his family's beneficence helped his community, and with enormous success and unparalleled influence, he applied these early lessons throughout his life in business, public service and philanthropy.

At age 20, Mr. Jones moved from Tennessee to Dallas to work at his uncle M.T. Jones's largest lumberyard. M.T. owned sawmills, lumberyards and timberland throughout Texas and lived in Houston, the home base of his vast operations. Mr. Jones would later recall in a speech, *"It may be that my uncle and I were too much of the same temperament to be entirely congenial, but after he found that I had energy and interest for business, as well as for play, we got on better and, I am glad to say, were fast friends long before he died at St. Paul's Sanitarium in June 1898. In fact, he named me one of his executors and that took me to Houston, the headquarters of his business."*



Houston Ship Channel, ca. 1914



Mr. Jones's 1898 arrival, the 1900 Galveston hurricane and the discovery of oil at Spindletop in 1901 changed Houston's future. The hurricane shifted the region's inevitable development from Galveston to Houston; Spindletop marked the beginning of the area's evolution into the nation's petrochemical capital; and Jesse Jones began building the city that would accommodate the explosive growth.

He started building small homes south of downtown that he sold on unique, long-term installment plans. Then he began building Houston's first skyscrapers, including the 10-story Houston Chronicle Building, which brought him a half interest in the newspaper, and the Texas Company Building, which helped make Texaco and the petroleum industry a permanent part of the city's business community. He continued to add office buildings, movie theaters and hotels to the central business district in time for the opening of the Houston Ship Channel in 1914.

In addition to Houston's foremost developer, Mr. Jones became a prominent civic leader. He raised Houston's half of the funds for the Ship Channel (the federal government paid the rest in one of the nation's first public/private partnerships) and was the first chairman of the Houston Harbor Board. The opening of the Ship Channel internationalized Houston almost overnight and elevated the South's still struggling post-Civil War economy.

Mr. Jones's success with the Ship Channel caught President Woodrow Wilson's attention. President Wilson offered him ambassadorships and cabinet positions, but Mr. Jones turned the president down so he could continue to build his businesses and his city. However, World War I changed his mind. When President Wilson asked Mr. Jones to become director general of military relief for the American Red Cross, he accepted at once and delegated management of his businesses and buildings to his colleague Fred Heyne.

Within months, Mr. Jones had recruited nurses and doctors for the battlefields, organized hospitals, canteens and ambulance networks throughout Europe, and established rehabilitation centers for the wounded. The Red Cross called him "big brother to 4 million men in khaki." He was also an early advocate for women's rights and lobbied President Wilson to give Army nurses military rank and authority.

After the war, Mr. Jones accompanied the president to the Paris Peace Conference and helped reorganize the Red Cross from a loosely knit group of local societies into the permanent international relief agency it is today. He wrote to Mr. Heyne from Paris, *"I am very sorry not to be home during this opportune time, for no doubt I could accomplish a good deal if I could bring myself to believe that my real duty did not lie here. The situation of the world is most alarming and chaotic,*

Houston's Main Street, 1890s

Houston Chronicle Building, 1909

President Woodrow Wilson and Jesse H. Jones, New York, 1918



Jesse H. Jones's Gulf Building, 1928

Downtown Houston, 1930s

President Franklin Roosevelt with Mary Gibbs Jones and Jesse H. Jones after he is sworn in as secretary of commerce, 1940

and I do not know how it is going to be adjusted. Surely there can be no peace unless people have the necessities of life—food and clothes.”

After the peace treaties were signed, Mr. Jones returned to Houston, embarked on the most ambitious phase of his building career and married Mary Gibbs Jones in 1920. Mary Gibbs, a doctor's daughter, was born on April 29, 1872, in Mexia, Texas, and grew up with nine brothers and sisters in a home filled with music and books. With her family's encouragement, she attended Methodist College in Waco, Texas, at a time when few women went to college or finished high school. Mary's exposure to literature, music, education and other cultures through extensive travel kindled an interest in learning and the arts that would flourish throughout her life. While Mr. Jones was building in midtown Manhattan and filling up Houston's Main Street with the city's tallest buildings, its most ornate movie palaces and its grandest hotels, the couple began making substantial donations to colleges, hospitals, orphanages, museums and other civic institutions.

In addition to real estate development and philanthropic activities, Mr. Jones served as finance chairman of the Democratic National Committee and helped bring the party's national convention to Houston in 1928. It was the first major political convention to be held in the South since before the Civil War and was one of the first to be heard widely on the radio. An associate wrote Mr. Jones after the location was announced, “You have caused the South

and Texas to receive greater recognition than any other individual in the history of this country.”

Mr. Jones continued to realize his vision of a great city and in 1929 completed a 35-story Art Deco building for the Gulf Oil Company and his National Bank of Commerce. Shortly after the building was completed, the nation plunged into the Great Depression. When two failing Houston banks were about to bring down many others throughout the region, Mr. Jones gathered the city's leaders for three days and nights to work out a plan that allowed the stable banks and several local companies to rescue the two faltering banks. As a result of Mr. Jones's leadership and determination, no banks in Houston failed during the Great Depression. After the successful meeting, Mr. Jones wrote to one of his colleagues, “I believe that all we have done, are doing and must continue doing is necessary for the general welfare, and we cannot escape being our brother's keeper.” Mr. Jones's work did not go unnoticed.

Mr. Jones's business acumen and civic leadership were called upon during the depths of the Great Depression when President Herbert Hoover asked him in 1932 to serve on the board of the newly created Reconstruction Finance Corporation (RFC). After his inauguration, President Franklin Roosevelt expanded the RFC's powers and made Mr. Jones its chairman. Under his leadership, the RFC disbursed more than \$10 billion (about \$175 billion in constant dollars) to reopen banks, save homes, farms and businesses, rescue the railroads and bring electricity



to rural areas. Fannie Mae and the Export-Import Bank are only two of the many enduring agencies created by Mr. Jones and the RFC. Remarkably, the funds allocated for the massive RFC recovery efforts were returned to the United States Treasury, along with a \$500 million profit. Vice President John Nance Garner once said about Mr. Jones, *“He has allocated and loaned more money to various institutions and enterprises than any other man in the history of the world.”*

As World War II loomed, Mr. Jones shifted the RFC’s focus from domestic economics to global defense and used the corporation’s enormous clout to build and equip more than 2,000 plants that manufactured everything from airplanes and battleships to penicillin and synthetic rubber, an industry the RFC developed from the lab. In 1940, after Congress passed a special resolution allowing Mr. Jones to become secretary of commerce while maintaining his RFC position, the ‘Saturday Evening Post’ reported, *“Next to the President, no man in the government and probably in the United States wields greater powers.”* Today scholars give Jesse Jones a tremendous amount of credit for his role in saving capitalism during the Great Depression and mobilizing industry in time to fight and win World War II.

After 15 years of public service in Washington, D.C., the Joneses returned to Houston in 1947 and began to focus on philanthropy. They felt education

was the key to a healthy community and established scholarship programs to help students attend college. The programs included minority students and always were divided equally between men and women. By the time Mr. Jones passed away on June 1, 1956, the foundation had helped more than 4,000 students attend 57 colleges and universities. In her later years, Mrs. Jones brought opera to Houston radio, served on the general council of New York’s Metropolitan Opera and helped First Lady Mamie Eisenhower support military widows. She joined Houston Endowment’s board in 1954, and one year later the foundation made a \$1 million grant to build the Mary Gibbs Jones College at Rice Institute (now Rice University) so women, for the first time, could live on campus. More than 30 scholarship programs were named for Mrs. Jones, and since her death on August 20, 1962, many more Houston Endowment grants have carried her name as a tribute to her public service and philanthropy.

Seventy-five years ago, the Joneses began donating the wealth they amassed to Houston Endowment so they could, in perpetuity, continue to help create a thriving community where they had prospered.

A 1940 newspaper political cartoon published after the U. S. Congress passed a special resolution allowing Jesse Jones to simultaneously be secretary of commerce and federal loan administrator  
 Jesse H. Jones with a World War II Department of Commerce promotional poster  
 Mary Gibbs Jones selling war bonds with former First Lady Edith Wilson, 1942



Early Houston Endowment board of directors from left to right: Fred Heyne, Sr., Milton Farthing, Gibbs Meador, Mary Gibbs Jones, Jesse H. Jones, J. Hurt Garrett, John T. Jones, Jr., Milton Backlund, W.W. Moore



# BOARD OF DIRECTORS

# 75



Houston Endowment Board resolution,  
October 31, 1956, in memory of Jesse H.  
Jones, who passed away on June 1, 1956

We trustees, the appointed custodians of the material accumulation of Jesse Jones, dedicate ourselves not only to this trusteeship of his worldly goods, but also through our trust to the enduring custody of those many generous qualities of spirit that indelibly stamped the character of the man known and loved by us all... In consideration of this priceless legacy of trust be it resolved that this board of trustees solemnly dedicates itself to the perpetuation of the dignity, spirit, and character of Jesse H. Jones, and that each trustee by his actions, either as an individual or as part of our official body, conduct himself in keeping with the beliefs and ideals of our founder.

**Since 1937, the following individuals have served on Houston Endowment's board of directors and provided their skills and insights to guide and perpetuate the legacy of Jesse H. and Mary Gibbs Jones:**

D. Kent Anderson	Larry Faulkner	Harold Metts
Milton Backlund	J. Hurt Garrett	W. W. Moore
Audrey Jones Beck	Fred J. Heyne	Jo Murphy
John A. Beck	Jesse H. Jones	H. Joe Nelson, III
Jack S. Blanton	John T. Jones, Jr.	Laurence E. Simmons
George Butler	Mary Gibbs Jones	Alvin Thigpen
Milton Carroll	Melissa Jones	Phillip G. Warner
Howard Creekmore	Tilford Jones	H. F. Warren
Milton Farthing	Gibbs Meador	Rosie Zamora

# BOARD OF DIRECTORS

Today Houston Endowment is governed by a self-perpetuating board of directors who are elected to three-year terms. Directors, who can serve up to four terms, typically are chosen from business and civic leaders in Houston.

## **ANNE CHAO**

Elected February 2, 2010

Anne Chao graduated from Wellesley College and received master's and doctoral degrees from Rice University, where she lectures in the History Department, focusing on the field of modern Chinese history, and in the Program in Poverty, Justice, and Human Capabilities. Dr. Chao serves on the governing boards of the Alley Theatre, the Houston Ballet, the Houston Public Library Foundation and the Museum of Fine Arts, Houston. She serves on the advisory boards of Teach For America and Rice University's Chao Center for Asian Studies, Shepherd School of Music and Center for the Study of Women, Gender, and Sexuality.



## **LINNET DEILY, CHAIR**

Elected to the board February 13, 2007

Elected as chair February 5, 2013

Linnet Deily graduated from The University of Texas at Austin and received a master of arts in international management from The University of Texas at Dallas. She currently serves on the boards of directors of Chevron Corporation and Honeywell International Inc. She has served as deputy U.S. trade representative and U.S. ambassador to the World Trade Organization, vice chairman of the Charles Schwab Corporation and chairman and chief executive officer of First Interstate Bank of Texas. She has also served on the board of directors of the Museum of Fine Arts, Houston, as president of the Standing Committee of the Episcopal Diocese of Texas and on the board of regents of The University of Texas System. Ms. Deily currently serves on the boards of the Houston Zoo and The Jung Center and on the M.D. Anderson Board of Visitors. She also serves as the executive chair of the St. Luke's Episcopal Health System board of directors.





**DOUGLAS L. FOSHEE**

Elected February 2, 2010

Douglas L. Foshee is chairman, president and chief executive officer of Sallyport Investments LLC. He is former chairman, president and chief executive officer of El Paso Corporation. Previously he served in executive positions at Halliburton, Nuevo Energy Company, Torch Energy Advisors Inc. and ARCO International Oil and Gas Company. Mr. Foshee earned a master of business administration degree from the Jesse H. Jones Graduate School of Business at Rice University and a bachelor of business administration degree from Southwest Texas State University. Mr. Foshee serves on the boards of Cameron International Corporation, Texas Business Hall of Fame Foundation and Rice University. Mr. Foshee is a member of the Council of Overseers for the Jesse H. Jones Graduate School of Business at Rice University, and KIPP's board of trustees. He is a recipient of the 2007 Ellis Island Medal of Honor for his commitment to helping children succeed and his leadership role in the business community. In 2008, Mr. Foshee was named Distinguished Alumni at Texas State University, and in 2012 he was inducted into the Texas Business Hall of Fame.



**ANTHONY W. HALL, JR., CHAIR**

Elected to the board January 28, 2003

Served as chair 2010 –2012

An attorney now in private practice, Anthony Hall previously served as the chief administrative officer and city attorney for the City of Houston. He is a graduate of Howard University in Washington, D.C., and the Thurgood Marshall School of Law at Texas Southern University. Mr. Hall has served as a representative in the Texas Legislature, a councilmember-at-large on the Houston City Council and chairman of the board of directors of the Metropolitan Transit Authority of Harris County. Mr. Hall serves on the board of directors of Kinder Morgan and is a past member of the board of directors of El Paso Corporation and the Coastal Corporation. He is chairman of the Boule Foundation and is past national president of Sigma Pi Phi fraternity. He serves on the boards of Junior Achievement of Southeast Texas, Inc., the Ensemble Theatre, Texas Cultural Trust and Lone Star Flight Museum. Mr. Hall is a Vietnam veteran who attained the rank of captain and received the Purple Heart and three Bronze Stars.

**JESSE H. JONES II**

Elected February 13, 2007

Jesse H. Jones II is the grandnephew of Jesse H. and Mary Gibbs Jones. He graduated from The University of Texas at Austin and currently has interests in several wireless communication ventures in the southwest and a snack food company in Georgia. Mr. Jones is former chairman of the Houston Ballet Foundation and is currently serving as board chairman of the Foundation for DePelchin Children's Center. He also serves on the boards of the Independent Arts Collaborative, Museum of Fine Arts, Houston, and Society for the Performing Arts, and he is a board member and treasurer of the Houston Public Library Foundation. He has served as president of DePelchin Children's Center and board chairman of the Society for the Performing Arts, and was on the boards of the Alley Theatre, Houston Achievement Place, Texas Freedom Network, Houston Arts Alliance, ChildBuilders, the Mental Health Association and Planned Parenthood.

**DAVID LOUIS MENDEZ**

Elected January 31, 2006

David Mendez is head of Middle Market Industries at JPMorgan Chase, Commercial Banking. He began his career at the bank after graduating from The University of Texas at Austin in 1975. Mr. Mendez serves on the boards of Texas Children's Hospital, Central Houston and the Dean's Executive Board of the University of Houston's C. T. Bauer College of Business. His recent accomplishments and civic contributions include chairman of the Center for Houston's Future for 2004-2005, member of the board of trustees and Executive Committee of the United Way of the Texas Gulf Coast, where he served as co-chairman of the 2003-2004 citywide fundraising campaign, and member of the Executive Committee of the Greater Houston Partnership. He has served on the Galveston-Houston Diocese Bishop's Finance Council, the 2004 Super Bowl Host Committee and the board of directors of Catholic Charities. He was honored by the Houston Area Women's Center with its 2005 "Making a Difference" Award; in 2007 he was honored by the Jewish Community Center at its annual Children's Scholarship Ball. In 2011, he served as the honorary chairman for the Houston Area Urban League, and in 2012 he served as the honorary chairman of the "Art on The Avenue" event.





**PAUL B. MURPHY, JR.**

Elected January 31, 2006

Paul B. Murphy, Jr., is the chief executive officer of Cadence Bancorp LLC, a company that makes investments in the banking industry. He was previously chief executive officer of Amegy Bank of Texas. A graduate of Mississippi State University, he also earned a master of business administration degree from The University of Texas at Austin. He began his banking career at Allied Bank of Texas and helped found Southwest Bank of Texas, the predecessor to Amegy Bank. Mr. Murphy serves on the governing boards of Hines Real Estate Investment Trust, Inc.; Oceaneering International, Inc.; the Federal Reserve Bank of Dallas, Houston Branch; The Kinkaid School; and the Children's Museum of Houston. He is also active in the Young Presidents Organization.



**ANN B. STERN, PRESIDENT**

Elected January 31, 2012

Ann Stern became president of Houston Endowment on March 1, 2012. Most recently she was executive vice president of Texas Children's Hospital, where she managed inpatient clinical operations and administration, and oversaw the development of the Pavilion for Women and the Jan and Dan Duncan Neurological Research Institute, the world's first basic research institute for childhood neurological diseases. Ms. Stern previously practiced law with Beck, Redden & Secrest and Andrews Kurth, and she taught business law at the University of St. Thomas. She earned her bachelor's and law degrees from The University of Texas at Austin. Ms. Stern chairs the board of St. John's School and serves as a director of the Federal Reserve Bank of Dallas.

## Independent Members of the Investment Committee

**L. E. SIMMONS** graduated from the University of Utah, studied at the London School of Economics and received his master's from Harvard Business School. He is founder and president of SCF Partners and serves on the boards of directors of Zions Bancorporation, Ellison Ranching Company and United Airlines. He is on the board, and former chairman, of Texas Children's Hospital; a trustee of Rice University and former chairman of the Council of Overseers for its Jesse H. Jones Graduate School of Business; and a trustee of the Texas Heart Institute and the Gordon and Mary Cain Pediatric Neurology Research Foundation. He also serves on the London School of Economics North American Advisory Council, on the advisory board of Scripps Cardiovascular Institute and as a director of the Methodist Hospital Research Institute. Mr. Simmons was formerly a member and chairman of Houston Endowment's board of directors.

**BRUCE ZIMMERMAN** graduated from Duke University and Harvard Business School. He is chief executive and chief investment officer of The University of Texas Investment Management Company (UTIMCO), the nation's second-largest pool of university assets. Mr. Zimmerman began his career at Bain and Company then went on to serve in a variety of management roles at Texas Commerce Bank (now JPMorgan Chase). Before joining UTIMCO, he was global head and chief investment officer of pensions at Citigroup.



# STAFF

142

AS OF JULY 2013



**ANN B. STERN**  
President and Chief  
Executive Officer



**SHERYL L. JOHNS**  
Executive Vice President



**GEORGE V. GRAINGER**  
Acting Program Director

## Grant Staff



**CONSTANCE G. BICKHAM**  
Jones Scholars  
Program Manager



**LA SHAUNDA DAVIS**  
Administrative Assistant



**HARRIET W. GARLAND**  
Grant Manager



**MEGHNA GOSWAMI**  
Program Officer–  
Human Services



**GEORGE V. GRAINGER**  
Senior Program Officer–  
Education



**LYDIA L. HICKEY**  
Grant Manager



**NECOLE S. IRVIN**  
Program Officer–Health



**E. JANE KENNEDY, CPS**  
Grant Manager



**DAVID LAKE**  
Program Officer –  
Arts & Culture



**ELIZABETH G. LOVE**  
Program Officer –  
Environment



**DEBBIE A. MCNULTY**  
Program Officer –  
Arts & Culture and  
Human Services



**M. A. TONI MORENO**  
Jones Scholars  
Program Officer



**LESLIE C. WANG**  
Senior Program Officer–  
Human Services

## Finance and Administration Staff



**DEBORAH BESSIRE**  
Human Resource Manager



**ROSA H. CERVANTES**  
Investment Accountant



**STEVEN L. FENBERG**  
Community Affairs Officer



**AMANDA KUHN**  
Executive Assistant  
to the President



**JERRY N. LEONARD**  
Accounting Assistant



**PAUL W. MCKINNEY**  
Office Assistant



**THOMAS C. NALL, JR.**  
Information Officer



**PEGGY J. REID, CPA**  
Controller



**VENISA M. RUIZ**  
Administrative Assistant



**KAYE B. WILLIAMS**  
Administrative Assistant



# FINANCIAL REPORT

75

# FINANCIAL REPORT

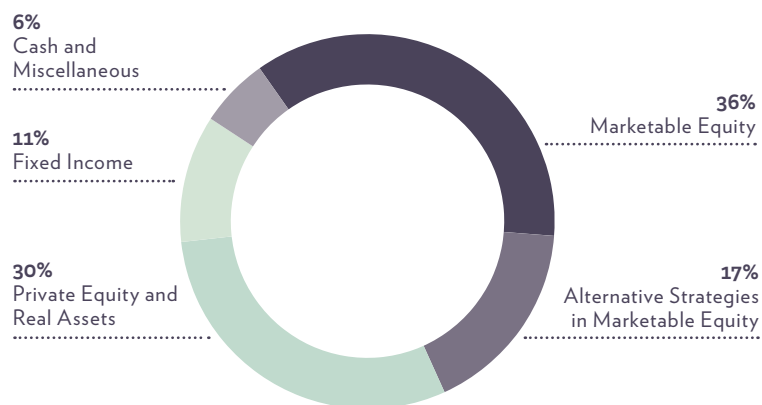
146

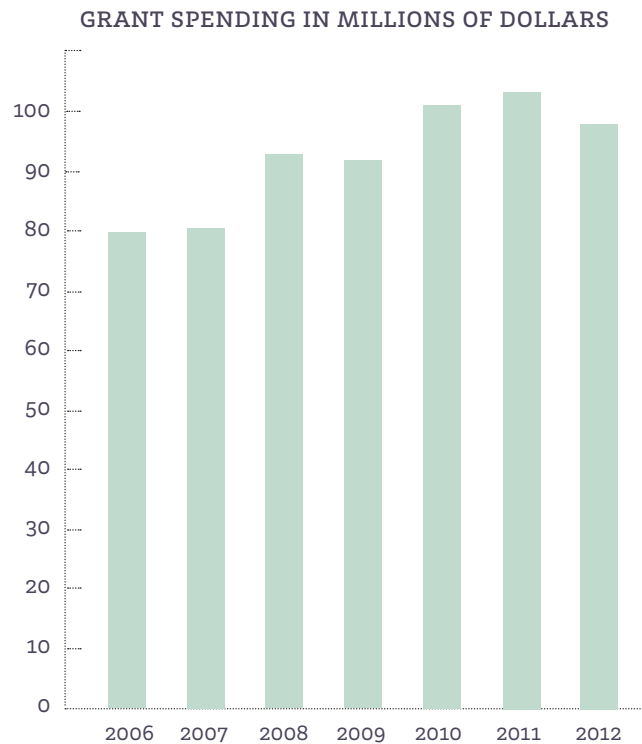
FINANCIAL REPORT

## INVESTMENTS

During 2012, the value of Houston Endowment's investments increased from \$1.454 to \$1.543 billion. The \$89 million net increase includes investment income and the increase in the market value of the investments less grant payments and investment and operating expenses. Total investment return (income plus capital appreciation), after investment fees, for the year was 12.5 percent. The average annual compound return for the past five years, net of fees, was 3.1 percent and for the past 10 years was 8.3 percent.

At year-end, the foundation's endowment was invested as follows:





### GRANT SPENDING

In 2012, Houston Endowment’s target allocation for grants was \$98 million. Each year’s allocation is based on five percent of a three-year average of the endowment’s market value. The goals of this spending policy are to provide a relatively stable pattern of spending on grants, despite fluctuations in security markets, and to preserve the inflation-adjusted value of the endowment in perpetuity.

Grant allocations for any given year will differ from the total grants approved and total grants paid during that year. In 2012, the board of directors approved 252 grants totaling \$86 million, some of which will be paid in future years. Also, \$77 million was paid on 420 grants, some of which were approved in prior years.

In addition to its regular grantmaking program, Houston Endowment matches, on a two-for-one basis, personal gifts made to charitable organizations by the foundation’s directors and staff. In 2012, \$399,805 in grants was paid under the matching gift program. Under a directed grant program that allows directors and other program participants designated by the board to assign certain amounts in grants to charitable organizations of their choosing, \$600,000 in grants was paid in 2012. The foundation also made grants of \$94,500 to organizations that support philanthropy and the charitable sector.

Since Houston Endowment was founded in 1937, the foundation has paid almost \$1.7 billion (\$3 billion in constant dollars) in grants.

# Financial Statements

The foundation prepares financial statements on a modified basis of cash receipts and disbursements that generally follows accounting principles used for federal excise tax purposes.

Unaudited summary financial information is presented below. Once audited financial statements for the years ending December 31, 2012 and 2011, are complete, they will be posted on the foundation's Web site at [www.houstonendowment.org](http://www.houstonendowment.org).

148

FINANCIAL REPORT

## STATEMENT OF ASSETS AND FUND BALANCE

	AS OF DECEMBER 31, 2012		AS OF DECEMBER 31, 2011	
	BOOK VALUE	MARKET VALUE	BOOK VALUE	MARKET VALUE
<b>ASSETS</b>				
Cash, cash equivalents and short-term investments	\$ 168,077,058	\$ 168,077,059	\$ 212,183,218	\$ 212,183,218
Marketable securities:				
Equity investments	0	0	9,887,496	9,278,459
Fixed-income investments	107,506,565	98,943,655	159,124,472	170,231,028
Accrued interest and dividends	5	286,078	224,416	709,612
Total marketable securities and related receivables	107,506,570	99,229,733	169,236,384	180,219,099
Other investments	1,063,002,401	1,210,781,397	962,455,308	999,683,077
Real property	16,619,570	62,822,585	16,533,300	60,395,487
Other assets (net of depreciation)	1,623,190	1,659,906	1,625,070	1,647,589
Total assets	<u>\$ 1,356,828,789</u>	<u>\$ 1,542,570,680</u>	<u>\$ 1,362,033,280</u>	<u>\$ 1,454,128,470</u>
<b>FUND BALANCE</b>				
Appropriated for grants payable in future years	\$ 90,970,545	\$ 90,970,545	\$ 84,917,290	\$ 84,917,290
Unappropriated fund balance	1,265,858,244	1,451,600,135	1,277,115,990	1,369,211,180
Total fund balance	<u>\$ 1,356,828,789</u>	<u>\$ 1,542,570,680</u>	<u>\$ 1,362,033,280</u>	<u>\$ 1,454,128,470</u>

## STATEMENTS OF REVENUES, EXPENDITURES AND CHANGES IN FUND BALANCE

	YEARS ENDED DECEMBER 31	
	2012	2011
<b>REVENUES:</b>		
Partnership income	\$ 7,599,884	\$ 4,595,362
Royalties and rents	6,948,180	4,570,191
Interest	6,522,244	7,808,189
Dividends	144,289	10,135,987
Other income	187,275	148,792
	21,401,872	27,258,521
<b>EXPENDITURES:</b>		
Investment expenses	20,215,479	16,747,021
Administrative expenses	5,158,348	5,292,048
Federal excise taxes	1,100,000	1,200,000
	26,473,827	23,239,069
Excess of expenditures over revenues before grant payments	(5,071,955)	4,019,452
Grant payments	77,706,589	77,044,402
Excess of expenditures over revenues	(82,778,544)	(73,024,950)
Fund balance at beginning of year	1,362,033,280	1,349,331,842
Realized capital gains	77,574,053	85,726,388
Fund balance at end of year	\$ 1,356,828,789	\$ 1,362,033,280



# GRANT APPLICATION

Houston Endowment makes grants to nonprofit organizations that are recognized as charitable organizations by the Internal Revenue Code. The foundation supports organizations that serve Harris County and contiguous counties.\* Grants are never made outside of the United States or to individuals.

Houston Endowment provides funds to organizations that support and promote arts and culture, education, the environment, health and human services. The foundation also supports projects throughout the state that are central to Texas history.

To learn more about the programs Houston Endowment supports and its grantmaking guidelines, or to begin an online grant application, click on “Application Guidelines” at [www.houstonendowment.org](http://www.houstonendowment.org).

*\*Brazoria, Chambers, Fort Bend, Galveston, Liberty, Montgomery and Waller Counties.*





**INDEX** 75

- 3 A Bereavement Foundation 111  
 ACCION Texas Inc. 122  
 Achieving the Dream Inc. 45, 52  
 Adult Reading Center, Inc. 122  
 AIDS Foundation Houston Inc. 86, 93  
 AIDS Research Consortium of Houston 94  
 Air Alliance Houston 69, 75, 123  
 Albert Schweitzer Fellowship Inc. 94  
 Alley Theatre 15, 24  
 Alliance of Community Assistance Ministries Inc. 107, 111  
 American Festival for the Arts 22  
 American Leadership Forum 124  
 American Lung Association of the Plains-Gulf Region Inc. 69, 75  
 American Red Cross, Greater Houston Area Chapter 101, 111  
 Anti-Defamation League 119  
 The Arc of Greater Houston 115  
 Ars Lyrica Houston 24  
 Art Council Inc. 24  
 Art League of Houston 24  
 Asia Society Texas Center 35  
 Asian American Health Coalition of the Greater Houston Area 94  
 Assistance League of Montgomery County 111  
 Association of Fundraising Professionals-Greater Houston Chapter 124  
 Association of Governing Boards of Universities and Colleges 51  
 Aurora Picture Show 24  
 Avance Inc. 119  
 Avenue Community Development Corporation 123  
 AVID Center 52  
 Bach Society Houston 24  
 Bay Area Rehabilitation Center 115  
 Bayou Land Conservancy 67, 73  
 Bayou Preservation Association Inc. 76  
 Be The Match Foundation 94  
 Bering Omega Community Services 86, 94  
 Best Buddies International Inc. 115  
 Better Business Bureau of Metropolitan Houston Educational Foundation 122  
 Big Brothers Big Sisters Lone Star 119  
 Boat People SOS Inc. 111  
 Brazoria County Society for the Prevention of Cruelty to Animals 78  
 Brazos Bend Guardianship Services 115  
 Bridge Over Troubled Waters Inc. 117  
 Bridges to Life 111  
 Buckner Children and Family Services Inc. 102, 117, 119  
 Buffalo Bayou Partnership 66, 73  
 C.G. Jung Educational Center of Houston Texas 93  
 Camp For All Foundation 115  
 Capital Investing in Development and Employment of Adults Inc. 122  
 Career and Recovery Resources Inc. 115  
 Caring For Children Foundation of Texas Inc. 93  
 Casa de Esperanza de los Ninos Incorporated 117  
 Catastrophic Theatre Inc. 24  
 Cathedral Health Ministries 111  
 Catholic Charities of the Archdiocese of Galveston-Houston 111  
 Cenikor Foundation Inc. 122  
 Center for Effective Philanthropy Inc. 52  
 Center for Houston's Future Inc. 52, 124  
 CEOS for Cities NFP 52  
 Chambers Recovery Team 123  
 Change Happens 119  
 Child Advocates Incorporated 117  
 ChildBuilders 105, 117  
 Children at Risk Inc. 117  
 Children's Center for Self-Esteem Inc. 119  
 Children's Defense Fund 95  
 Children's Museum Inc. 17, 35  
 Children's Prison Arts Project 119  
 Chinese Community Center Inc. 111  
 Christus Foundation for Healthcare 89, 95  
 Citizen Schools Inc. 52  
 Citizens for Animal Protection Inc. 78  
 Citizens' Environmental Coalition Educational Fund 76  
 City Ballet of Houston 22  
 Classical Theatre Company 24  
 ClayHouston 22  
 Coalition for the Homeless 106  
 Collaborative for Children 46, 52, 119  
 Communities Foundation of Texas Inc. 53  
 Communities In Schools Bay Area Inc. 119  
 Communities In Schools of Houston, Inc. 103, 120  
 Communities In Schools-Baytown Inc. 120  
 Conservation History Association of Texas 73  
 Contemporary Arts Museum Houston 24  
 Council for Adult and Experiential Learning 122  
 Country Playhouse 24  
 Covenant House Texas 111  
 Crisis Intervention of Houston Incorporated 111  
 Crossroads Community Partnership for Youth Inc. 120  
 Cypress Creek Fine Art Association 24  
 Cypress Creek Foundation for the Arts and Community Enrichment 24  
 Da Camera Society of Texas 24  
 Dallas Foundation A TX Nonprofit Corporation 35  
 Dance Houston 22  
 Dance of Asian America 25, 35  
 Dance Source Houston 22  
 Daya Inc. 118  
 DePelchin Children's Center 102, 118  
 Depression and Bipolar Support Alliance DBSA Greater Houston 95  
 Dionysus Theatre 115  
 Discovery Green Conservancy 65  
 Diverse Works Inc. 25  
 Dominic Walsh Dance Theater 25  
 Earl Carl Institute for Legal and Social Policy Inc. 120  
 Earthen Vessels Inc. 25  
 East Ft. Bend Human Needs Ministry Inc. 111  
 The Education Foundation of Harris County 104, 120  
 Education Pioneers Inc. 51  
 El Centro de Corazon 95  
 Ensemble Theater 25  
 Environment Texas Research and Policy Center Inc. 76  
 Environmental Defense Fund Incorporated 69, 75  
 Environmental Integrity Project 75  
 Epiphany Community Health Outreach Services 111

Evelyn Rubenstein Jewish Community Center of Houston Texas 22  
 Executive Service Corps of Houston Inc. 124  
 Express Theatre 25  
 Eye Care for Kids Foundation 95  
 Families Empowered 53  
 Family Promise of Lake Houston 111  
 Family Promise of Montgomery County Inc. 112  
 Family Service Center at Houston and Harris County 95  
 Family to Family Network 116  
 Fort Bend County Women's Center, Inc. 118  
 Fort Bend Senior Citizens Meals on Wheels & Much Much More Inc. 116  
 FotoFest Inc. 25  
 Foundation for the Retarded 116  
 Fourth Ward Clinic 95  
 FrenetiCore 22  
 Fresh Arts Coalition 22  
 Fundacion Latino Americana Contra El Sida Inc. 93  
 The Furniture Bank 106, 112  
 Galveston Arts Center Inc. 25  
 Galveston Bay Foundation 70, 76  
 Galveston County Economic Alliance Foundation Inc. 122  
 Galveston Historical Foundation Inc. 30, 37  
 Genesys Works 120  
 Gilbert & Sullivan Society of Houston 25  
 Girl Scouts of San Jacinto Council 103  
 Girls Incorporated of Greater Houston 120  
 Glasstire 22  
 Gleanings From the Harvest for Galveston 112  
 Goodwill Industries of Houston 116  
 Grantmakers for Education 54  
 Grantmakers in the Arts 38  
 Greater East End Management District 77  
 Greater Houston Community Foundation 53, 107  
 Greater Houston Preservation Alliance Inc. 33, 37  
 Greens Bayou Corridor Coalition 73  
 Gulf Coast—A Journal of Literature and Fine Arts 25  
 Gulf Coast Bird Observatory Inc. 73  
 Gulf Coast Trades Center 120  
 Habitat for Humanity International Inc. Northwest Harris County 123  
 Harmony House Inc. 93  
 Harris County Domestic Violence Coordinating Council 105  
 Harris County Healthcare Alliance 77, 87, 90, 93, 95  
 Healthcare for the Homeless—Houston 95  
 Hedgecroft Hospital and Rehabilitation Center 86  
 Heritage Society 33  
 Hermann Park Conservancy 66, 73  
 HITS Theatre 22  
 Hobby Center for the Performing Arts 15  
 Holocaust Museum Houston 35  
 Hope Stone, Inc. 22  
 Houston Academy of Medicine 83  
 Houston Achievement Place 120  
 Houston Advanced Research Center 76  
 Houston Arboretum & Nature Center 73  
 Houston Area Parkinson Society 116  
 Houston Area Urban League Inc. 124  
 Houston Area Women's Center Inc. 118  
 Houston Arts Alliance 19, 35, 38  
 Houston Arts and Media 37  
 Houston Audubon Society 73  
 Houston Ballet Foundation 15, 25  
 Houston Center for Contemporary Craft 18, 25  
 Houston Center for Literacy 107, 122  
 Houston Center for Photography 22  
 Houston Chamber Choir 26  
 Houston Children's Chorus Inc. 23  
 Houston Clean City Commission Inc. 77  
 Houston Community Health Centers Inc. 95  
 Houston Compass Inc. 112  
 Houston Council on Alcoholism and Drug Abuse Inc. 93  
 Houston Department of Health and Human Services Foundation Inc. 87, 95  
 Houston Early Music 26  
 Houston Eye Associates Foundation 95  
 Houston Festival Foundation Inc. 35  
 Houston Food Bank 106  
 Houston Friends of Chamber Music Inc. 26  
 Houston Galveston Institute Inc. 112  
 Houston Grand Opera Association, Inc. 26  
 Houston Hispanic Forum 53  
 Houston Hospice 96  
 Houston Humane Society 78  
 Houston Independent School District Foundation 53  
 Houston International Dance Coalition 26  
 Houston Masterworks Chorus, Inc. 26  
 Houston Metropolitan Dance Center Inc. 26  
 Houston Museum of African American Culture 35  
 Houston Museum of Natural Science 36  
 Houston Parks Board 67, 73  
 Houston Repertoire Ballet 26  
 Houston Society for the Prevention of Cruelty to Animals 78  
 Houston Symphony Society 15, 26  
 Houston Tomorrow 77  
 Houston Urban Debate League 120  
 Houston Volunteer Lawyers Program, Inc. 112  
 Houston Youth Symphony & Ballet 16, 23  
 Houston Zoo, Inc. 36  
 Houston-Harris County Immunization Registry Inc. 93  
 Human Rights Campaign Foundation 120  
 Humble Area Assistance Ministries 112  
 Independent Arts Collaborative 20, 38  
 Innovative Alternatives Inc. 118  
 Inprint Inc. 18, 26  
 Institute for Productivity in Education 51  
 Institute of Hispanic Culture of Houston Texas 23  
 Institute for Rehabilitation and Research 84  
 InterActive Theater Company 26  
 Interfaith CarePartners, Inc. 116  
 Interfaith Ministries for Greater Houston 116  
 Jazz Education Inc. 23  
 Jesse H. and Mary Gibbs Jones Scholars Program 52, 55–60  
 Jewish Family Service 112  
 John P. McGovern Museum of Health & Medical Science 36

- Julia Ideson Library Preservation Partners 34  
 Julia C. Hester House Inc. 112  
 Junior Achievement of Southeast Texas Inc. 120  
 Karen Stokes Dance 26  
 Katy Artreach 112  
 Katy Prairie Conservancy 68  
 Kick Drugs Out of America Foundation 121  
 Kids Hope USA Inc. 121  
 KIND Inc. 118  
 KIPP 47  
 Krist Samaritan Center for Counseling and Education 96  
 Land Trust Alliance Incorporated 73  
 Lawndale Art and Performance Center 27  
 Leadership Houston Inc. 124  
 Lee College 27  
 Legacy Community Health Services Inc. 86, 96  
 Literacy Advance of Houston, Inc. 122  
 Literacy Volunteers of Fort Bend County Inc. 122  
 Local Infant Formula for Emergencies Inc. 112  
 Local Initiatives Support Corporation 123  
 Lone Star Association of Charitable Clinics Inc. 96  
 Lyndon Baines Johnson Foundation 37  
 Magnificat House 112  
 Main Street Ministries Houston 112  
 Main Street Theater at Autry House 27  
 Making It Better 121  
 Manned Space Flight Education Foundation Incorporated 36  
 MDRC 116  
 Memorial Assistance Ministries Inc. 113  
 Memorial Hermann Healthcare System 84  
 Menil Foundation Inc. 27  
 Mental Health America of Greater Houston 88  
 The Mercury Baroque Ensemble 27  
 Methodist Hospital Foundation 83, 97  
 Mexican Institute of Greater Houston, Inc. 122  
 Mid-America Arts Alliance 19, 38  
 Miller Theatre Advisory Board Inc. 27  
 Missions of Yahweh Inc. 113  
 Montgomery County United Way Inc. 96  
 Montgomery County Youth Services Inc. 121  
 Montrose Counseling Center, Inc. 96  
 Multicultural Education and Counseling through the Arts 36  
 Museum of Cultural Arts Houston 27  
 The Museum of Fine Arts, Houston 16, 27  
 Museum of Printing History 37  
 Music in Context 27  
 Musiqa 27  
 My Brother's Keeper Outreach Center 113  
 Nameless Sound 27  
 NAMI Gulf Coast 116  
 National Audubon Society Inc. 74  
 National Center for Higher Education Management Systems 48  
 National College Access Network 45  
 National Parks Conservation Association 74  
 National Society to Prevent Blindness 87, 93  
 National Wildlife Federation 70, 76  
 Nature Conservancy of Texas 68  
 The Nature Discovery Center Inc. 74  
 Nehemiah Center Inc. 113  
 Neighborhood Centers Inc. 108, 123  
 Network of Behavioral Health Providers Inc. 96  
 New Hope Housing Inc. 123  
 North Pasadena Community Outreach Organization Inc. 123  
 Northwest Assistance Ministries 113  
 Old Spanish Missions, Inc. 32  
 The OneStar Foundation 113  
 Open Door Mission Foundation 113  
 Opera in the Heights 28  
 Orange Show Foundation 17, 28  
 Palmer Drug Abuse Program–Houston Inc. 113  
 Palmer Memorial Episcopal Church 113  
 Pew Charitable Trusts 38  
 Planned Parenthood Gulf Coast Inc. 86, 96, 113  
 Playworks Education Energized 121  
 Posse Foundation 53  
 Post Oak School 54  
 Prairie View A&M University 43, 85, 96  
 Precinct2gether Inc. 116  
 Prison Entrepreneurship Program 123  
 Pro-Vision Ministries Inc. 121  
 Progressive Forum 113, 124  
 Project Row Houses 36  
 Public Citizen Foundation, Inc. 75, 94  
 Reasoning Mind Inc. 53  
 Rebuilding Together Houston 123  
 Resolve It Inc. 121  
 Resource and Crisis Center of Galveston County 118  
 Revels Houston Inc. 28  
 Rice University, see William Marsh Rice University  
 River Oaks Chamber Orchestra 28  
 River Performing and Visual Arts Center 116  
 Rosenberg Library Association 30, 37  
 Rothko Chapel 36  
 Row House Community Development 124  
 Sam Houston State University 31  
 San Jacinto Museum of History Association 30, 37  
 San Jose Clinic A Texas Non-Profit Corporation 89, 96  
 Santa Maria Hostel Inc. 113  
 Scenic Texas Inc. 77  
 SEARCH Homeless Services 114  
 Several Dancers Core 28  
 Shelter Providers of Houston Inc. 114  
 Society for the Performing Arts 23  
 Society for the Preservation and Encouragement of Barbershop  
   Quartet Singing in America 28  
 South Central Houston Action Council Inc. 96  
 South County Community Clinic 96  
 Southeast Area Ministries 114  
 Southwest Alternate Media Project Inc. 28  
 Spacetaker 28  
 SPARK 65, 74  
 Spaulding for Children 118

Spay-Neuter Assistance Program Inc. 78  
 Spring Branch Independent School District 23  
 St. Francis Episcopal Day School 54  
 St. Luke's Episcopal Hospital 83  
 St. Vincent's House 114  
 Stages Inc. 28  
 Star of Hope Mission 114  
 Strive for College Collaborative 53  
 Student Conservation Association Inc. 74  
 Sugar Land Heritage Foundation 37  
 Tahiri Justice Center 118  
 Talento Bilingüe de Houston 23  
 Tamina Community Center 114  
 Target Hunger 114  
 Teach For America Inc. 47, 51  
 Texans Together Education Fund 124  
 Texas Accountants & Lawyers for the Arts 28  
 Texas AgriLife Extension Service, Texas A&M University System 76  
 Texas Campaign to Prevent Teen Pregnancy Inc. 94  
 Texas Charter Schools Association 51  
 Texas Children's Hospital 83  
 Texas Council on Family Violence Incorporated 118  
 Texas Cultural Trust Council 38  
 Texas Early Childhood Education Coalition 53  
 Texas Folklife Resources 36  
 Texas Health Institute 114  
 Texas Heart Institute 85, 97  
 Texas Historical Commission 31, 32  
 Texas Impact Education Fund 76  
 Texas Institute for Education Reform 51  
 Texas Land Conservancy 74  
 Texas Land Trust Council 74  
 Texas League of Conservation Voters Educational Fund 74  
 Texas Medical Center Orchestra 28  
 Texas One Voice A Collaborative for Health & Human Services 89, 97, 124  
 Texas Repertory Theatre Company Inc. 28  
 Texas Rice Industry Coalition for the Environment 74  
 Texas Southern University 44, 53, 77, 124  
 Texas Woman's University 43, 83, 105, 119  
 Theater LaB Houston 35  
 Theatre Under The Stars Inc. 35  
 Thomas B. Fordham Institute 53  
 TOMAGWA Ministries Inc. 97  
 Trees for Houston 74  
 The Trust for Public Land 74  
 Turtle Island Restoration Network 74  
 United States Veterans Initiative 106, 114  
 United Way of Greater Houston 101, 114  
 University of Houston 35, 51, 53, 69, 76, 83, 125  
 University of Houston Clear Lake 35  
 University of Houston-Downtown 44  
 University of Houston-Victoria 85  
 The University of Texas at Austin 54  
 The University of Texas Health Science Center at Houston 88, 94, 121  
 The University of Texas M.D. Anderson Cancer Center 84  
 Urban Harvest Inc. 77

US Foundation for the Inspiration & Recognition of Science & Technology 125  
 Village Learning Center Inc. 116  
 Virtuosi of Houston 23  
 Vita Living Inc. 116  
 Voices Breaking Boundaries 36  
 Volunteer Interfaith Caregivers Southwest 117  
 W. Leo Daniels Towers, Inc. 117  
 Waller Assistance & Restoration Ministries Inc. 114  
 Wesley Community Center, Inc. 114  
 West Houston Assistance Ministries Inc. 115  
 Westside Homeless Partnership 115  
 William Marsh Rice University 43, 47, 51, 54, 69, 75, 77  
 The Women's Fund for Health Education and Research 94  
 The Women's Home 115  
 Women's Resource of Greater Houston 123  
 Wonderworks 125  
 Workshop Houston 121  
 Writers in the Schools 23  
 YES Prep Public Schools 47  
 Young Audiences Inc. of Houston 23  
 Young Men's Christian Association of the Greater Houston Area 101, 121



IMPROVING LIFE FOR THE PEOPLE OF GREATER HOUSTON FOR 75 YEARS

# HOUSTON ENDOWMENT

A PHILANTHROPY ENDOWED BY  
Jesse H. and Mary Gibbs Jones



600 Travis, Suite 6400  
Houston, Texas 77002-3000  
Tel 713.238.8100  
Fax 713.238.8101

[www.houstonendowment.org](http://www.houstonendowment.org)

#### WRITER AND PRODUCER

Steven Fenberg

#### DESIGN

CORE Design Studio

#### PROOFREADER

Polly Koch

#### PHOTOGRAPHY

Cover	Jim Olive	44	Texas Southern University	84	The University of Texas M.D. Anderson Cancer Center
15	Alley Theatre—Jann Whaley	47	Teach For America	85	Texas Heart Institute
15	Houston Ballet Foundation—Nic Lehoux & Gensler	47	YES Prep Public Schools—Karen Sachar	86	Planned Parenthood Gulf Coast
16	Houston Youth Symphony & Ballet—Pin Lim	47	Rice University	87	City of Houston Department of Health and Human Services
17	Children's Museum	48	University of Houston—Thomas Campbell	89	Texas One Voice
17	Art Car Parade—Talya Arbisser	65	Discovery Green	90	dabfotocreative—David A. Brown
18	Houston Center for Contemporary Craft—Eric Hester	66	Buffalo Bayou Partnership	101	United Way of Greater Houston
18	Inprint	67	Houston Parks Board	101	YMCA of the Greater Houston Area
19	Houston Arts Alliance	67	Bayou Land Conservancy	101	American Red Cross
19	Mercury—The Orchestra Redefined—Simon Gentry	68	Katy Prairie Conservancy	102	Buckner Children and Family Services
20	Independent Arts Collaborative	—	Michael Morton Photography	103	Communities In Schools of Houston
30	Galveston Historical Foundation	69	Air Alliance Houston	105	ChildBuilders
31	Sam Houston State University	69	Environmental Defense Fund	106	SEARCH Homeless Services
31	<i>From a Watery Grave</i> —Robert Clark	69	Rice University—Associated Press, David J. Phillips	107	A member ministry of the Alliance of Community Assistance Ministries
32	Texas Historical Commission	84	Institute for Rehabilitation and Research		
33	Preservation Houston—John C. Lindy				
34	Houston Public Library—Houston Metropolitan Research Center				

Houston Endowment's 2012 annual report was printed entirely on Forest Stewardship Council certified paper using soy-based inks. FSC certification ensures that the paper used in this report contains fiber from well-managed and responsibly harvested forests that meet strict environmental and socioeconomic standards.



